

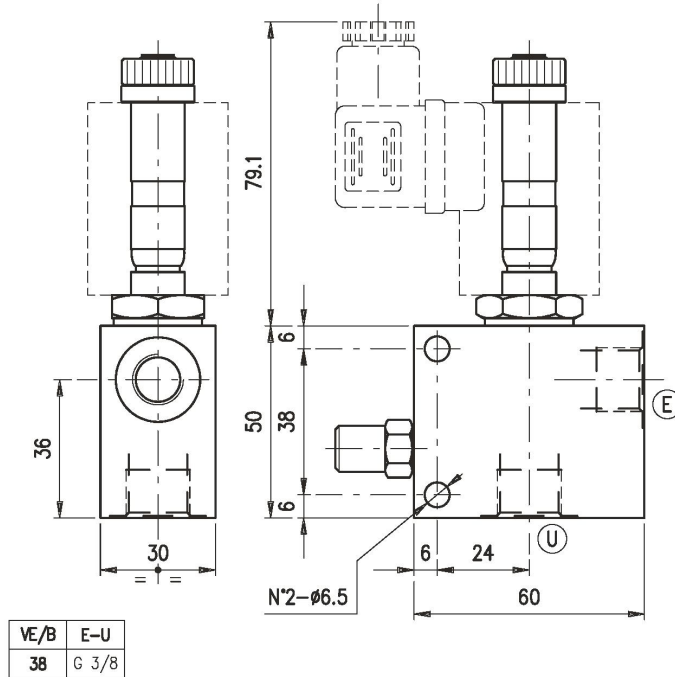
Sitzventile

– 2/2 Wege Sitzventil mit Nothand G 3/8" –

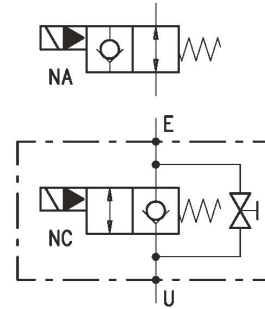


Bestellnr.	Typ	Bezeichnung	Gehäuse	max. Betriebsdruck bar	max. Durchfluss l/min	Code
230-1610-4910	VE/B 38 NC	3/8"	Alu	210	40	1720021105
230-1610-4915	VE/B 38/NA	3/8"				1720021106
230-1610-4920	VE/B 38/NC/ac	3/8"	Stahl	1720022102		
230-1610-4925	VE/B 38/NA/ac	3/8"		1720022101		

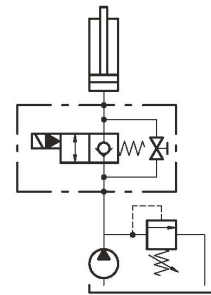
• **DIMENSIONS (mm)**



• **HYDRAULIC DIAGRAM**



• **ASSEMBLY DIAGRAM**



• **DESCRIPTION**

2-way electric valves, pilot-operated, poppet type.

• **OPERATION**

With the NA (normally opened) valve version and dropped-out solenoid, the oil flow is free from E to U and vice versa. When the solenoid is energized the flow is stopped from E to U and is free from U to E.

With the NC (normally closed) valve version and dropped out solenoid, the oil flow is stopped from E to U and is free from U to E. When the solenoid is energized the flow is free both from E to U and vice versa.

• **PERFORMANCE**

Maximum flow: 40 l/min.

Maximum pressure:

- Aluminium body 210 bar
- Steel body 350 bar

Solenoids: BE/... see page Z.2001.100. NOTE: BT...RAC solenoids and special connector should be strictly used with the NA version powered by AC current

Oil leaks from E to U: 0.10 cc/minute (2 drops) at 210 bar and oil viscosity of 46 cSt

Working temperature:

- Minimum -25°C max 90°C with standard BUNA N gaskets
- Minimum -20°C max 120°C with VITON gaskets on request

• **RECOMMENDATIONS**

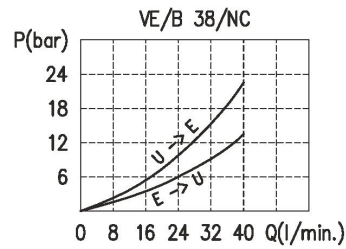
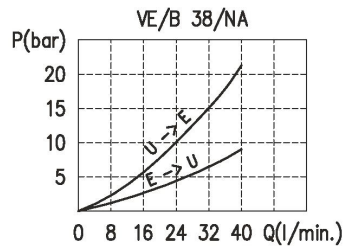
Fluid: best use mineral oil with viscosity ranging between 10 and 200 cSt

Filter: see page Z.9000.000.

Weight:

- 0.34 kg (aluminium body)
- 0.71 kg (steel body)

• **RATING DIAGRAMS**



Oil viscosity 46 cSt

• **CODE NUMBER**

