

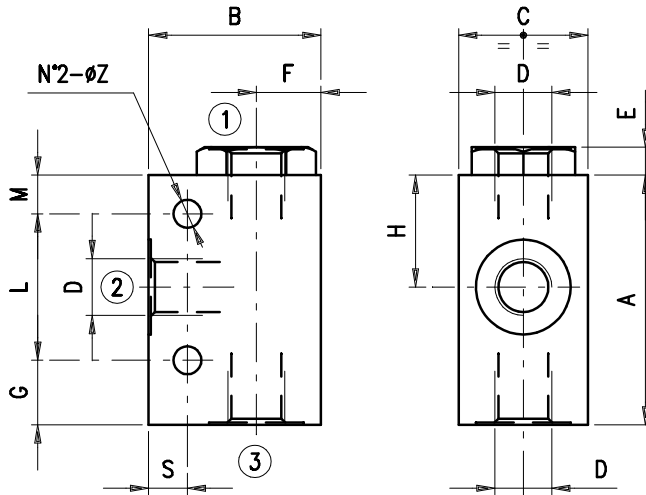
Wechselventile – G 3/4" und G 1" –



Bestellnr.	Typ	Bezeichnung	Gehäuse	max. Betriebsdruck bar	max. Durchfluss l/min	Code
230-0640-2400	VT 34/ac	3/4"	Stahl	400	100	1320042100
230-0640-2405	VT 100/ac	1"			150	1320052100

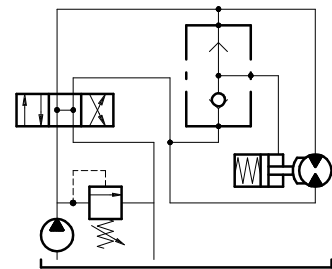
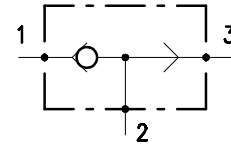
CHECK VALVES
VT 34 VT 100

• DIMENSIONS (mm)



VT	A	B	C	D	E	F	G	H	L	M	S	Z
34	90	68	50	G 3/4	8.5	26	19	41	60	11	11	8.5
100	100	82	60	G 1"	10	32	22	45	66	12	11	10.5

• HYDRAULIC DIAGRAM



• DESCRIPTION

Shuttle valve, ball type.

• OPERATION

Oil flow is produced from 1 to 2 or 3 to 2 with priority to the way with the bigger pressure.

• PERFORMANCE

Maximum flow:

- VT 34 = 100 l/min.

- VT 100 = 150 l/min.

Maximum Pressure: 400 bar.

Working temperature:

- minimum 25°C and max +90°C with standard BUNA gaskets

- minimum 20°C and max +120°C with special VITON gaskets on request

• RECOMMENDATIONS

Fluid: best use mineral oil with viscosity ranging between 10 and 200 cSt.

Filter: see page Z.9000.000.

Weight:

- VT 34 = 1.95 kg

- VT 100 = 3.12 kg

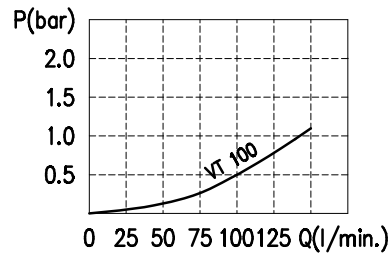
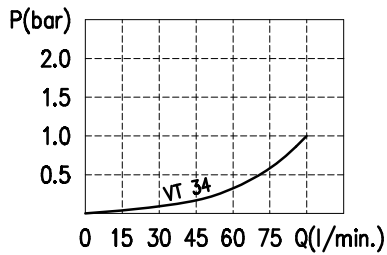
Material: internal components made out of high grade steel duly treated and fabricated.

For more information please ask our technical office .

Variations and modifications of technical features and dimensions are reserved. **OLEOSTAR S.p.A.** also reserves the right to stop production of each and any model listed in the catalogue with no notice.

230-0640

• RATING DIAGRAMS



Oil viscosity 46 cSt

• CODE NUMBER

