

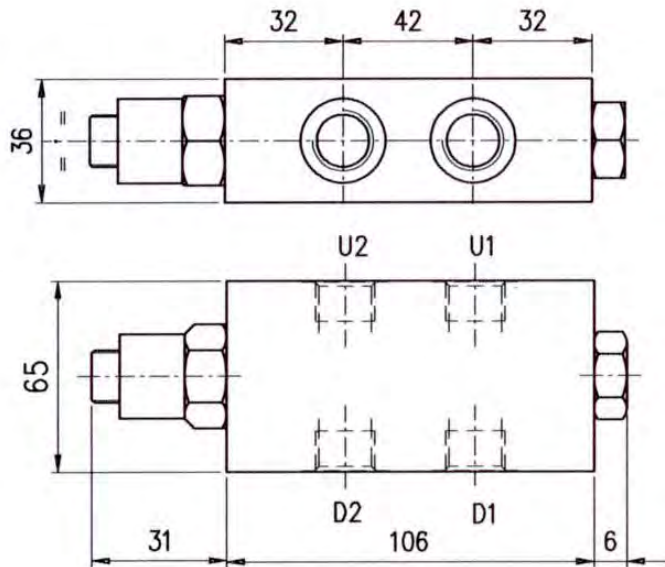
Differenzialventile



Bestellnr.	Typ	Bezeichnung	Gehäuse	Code
230-0540-2060	VRCL 38/gh	1/2"-Einstellb. 5-50bar-Hutmutter	Alu	1245023100
230-0540-2065	VRCL 38/TS/ac TIPO KD	1/2"-Einstellb. 5-50bar-Handrad	Stahl	1245023102
230-0540-2070	VRCL 18/MET/ac TIPO KD	1/2"-Einstellb. 40-110bar-Hutmutter		1245023401

SEQUENCE
VRCL/38

• **DIMENSIONS (mm)**



D1-D2	U1-U2
G3/8	G3/8

• **DESCRIPTION**

Regenerative valve

• **OPERATION**

Feeding the valve from D2, in neutral position, the valve regenerates the return flow coming back from U1. When the pressure exceeds the pressure setting, the valve's spool shifts to open from U1 to D1 while it close the passage from U1 to U2, feeding from D1 the cylinder is going back. The setting pressure should be at least 40 bar less then the max circuit pressure.

• **PERFORMANCE**

Maximum flow: 30 l/min.

Maximum Pressure: 210 bar (cast iron body)

Application range with standard springs: 30 + 140 bar (test setting 100 bar at 15 l/min.) 38 bar/turn

Working temperature:

- min. -25°C max. 90°C with standard BUNAN gaskets
- min. -20°C max. 200°C with optional VITON gaskets

• **RECOMMENDATIONS**

Fluid: best use mineral oil with viscosity ranging between 10 and 200 cSt.

Filter: see page Z.9000.000.

Weight: cast iron body 2,2 kg

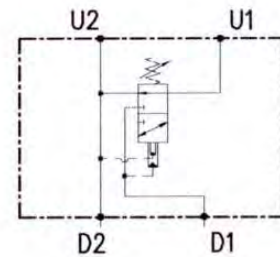
Material: internal components made out of high-grade steel duly treated and fabricated.

For more information please ask our technical office .

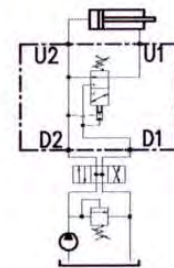
Variations and modifications of technical features and dimensions are reserved. **OLEOSTAR S.p.A.** also reserves the right to stop production of each and any model listed in the catalogue with no notice. Copy rights on the text contained herein belong to **OLEOSTAR S.p.A.** . Partial and full reproductions or copies of this catalogue are forbidden.

 **OLEOSTAR**

• **HYDRAULIC DIAGRAM**



• **ASSEMBLY DIAGRAM**



• **CROSS SECTION**

