

## Rohrleitungsventile – Druckfolgeventil direktgesteuert –

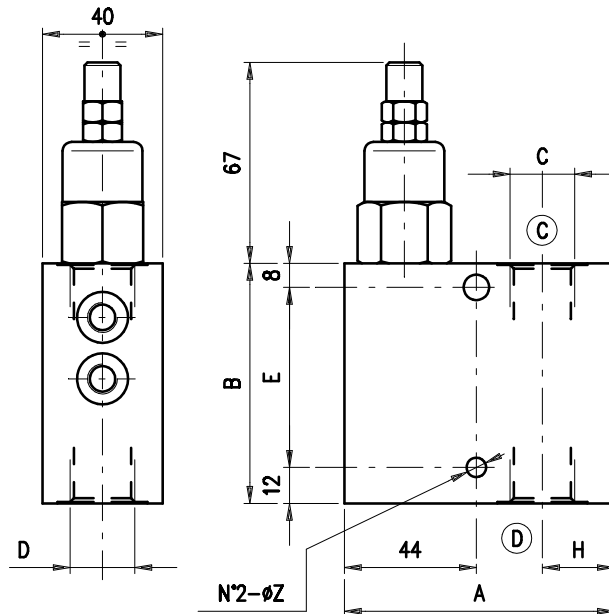


	Bestellnr.	Typ	Bezeichnung	Gehäuse	max. Betriebsdruck bar	max. Durchfluss l/min	Code			
direktgesteuert	230-0250-1135	VDSRL 10-12/TB.S	1/2"-Einstellb. 5-40bar-Hutmutter	Alu	210	50	1200031100			
	230-0250-1140	VDSRL 10-12/TV.S	1/2"-Einstellb. 20-80bar-Hutmutter				1200031101			
	230-0250-1145	VDSRL 10-12/TS.S	1/2"-Einstellb. 50-220bar-Hutmutter				1200031102			
	230-0250-1150	VDSRL 10-12/TR.S	1/2"-Einstellb. 180-350bar-Hutmutter				1200031103			
	230-0250-1155	VDSRL 10-12/TS.V	1/2"-Einstellb. 50-220bar-Handrad				1200031105			
	230-0250-1160	VDSRL 10-12/TV.V	1/2"-Einstellb. 20-80bar-Handrad				1200031106			
	230-0250-1165	VDSRL 10-12/TB.V	1/2"-Einstellb. 5-40bar-Handrad			1200031109				
	230-0250-1170	VDSRL 10-34/TB.S	3/4"-Einstellb. 5-40bar-Hutmutter			70	1200031150			
	230-0250-1175	VDSRL 10-34/TV.S	3/4"-Einstellb. 20-80bar-Hutmutter				1200031151			
	230-0250-1180	VDSRL 10-34/TS.S	3/4"-Einstellb. 50-220bar-Hutmutter				1200031152			
	230-0250-1185	VDSRL 10-34/TR.S	3/4"-Einstellb. 180-350bar-Hutmutter				1200031153			
	230-0250-1190	VDSRL 10-34/TV.V	3/4"-Einstellb. 20-80bar-Handrad				1200031157			
	230-0250-1195	VDSRL 10-34/TS.V	3/4"-Einstellb. 50-220bar-Handrad				1200031158			
	230-0250-1200	VDSRL 10-12/TS.S/ac	1/2"-Einstellb. 50-220bar-Hutmutter				Stahl	350	50	1200032100
	230-0250-1205	VDSRL 10-12/TR.S/ac	1/2"-Einstellb. 180-350bar-Hutmutter						1200032101	
	230-0250-1210	VDSRL 10-34/TS.S/ac	3/4"-Einstellb. 50-20bar-Hutmutter			70			1200032150	
230-0250-1215	VDSRL 10-34/TB.S/ac	3/4"-Einstellb. 5-40bar-Hutmutter	1200032151							

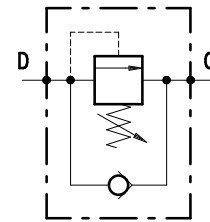
230-0250

SEQUENCE  
VDSRL 10 -

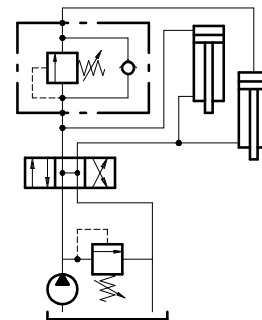
• DIMENSIONS (mm)



• HYDRAULIC DIAGRAM



• ASSEMBLY DIAGRAM



• DESCRIPTION

Direct control sequence valve.

• OPERATION

Allows for oil flow from D into C when the pressure in D achieves the spring setting value. Should back pressure arise in C, the valve opening pressure shall be same as the setting pressure plus the back pressure.

• PERFORMANCE

**Maximum flow:**

- VDSRL 10-12=50 l/min.
- VDSRL 10-34=70 l/min.

**Maximum Pressure:**

- 210 bar (aluminium valve)
- 350 bar (steel valve)

**Application range with standard springs:**

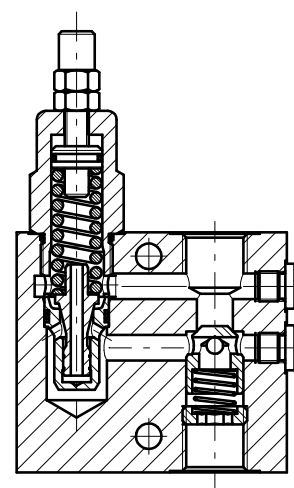
- 5 + 40 bar (test setting: 30 bar at 5 l/min.)
- 20 + 80 bar (test setting: 60 bar at 5 l/min.)
- 50 + 220 bar (test setting: 160 bar at 5 l/min.)
- 180 + 350 bar (test setting: 280 bar at 5 l/min.)

To perform setting of the valve see the pressure drop / flow diagram.

**Working temperature:**

- min. -25°C max. 90°C with standard BUNA N gaskets
- min. -20°C max. 120°C with optional VITON gaskets

RECOMMENDATIONS



**Filter:** see page Z.9000.000.

**Weight:**

- VDSRL 10-12=1.00 kg and 2.15 kg for aluminium and steel valves respectively
- VDSRL 10-34=1.10 kg and 2.41 kg for aluminium and steel valves respectively

**Cartridge used:** see page 1.1000.200.

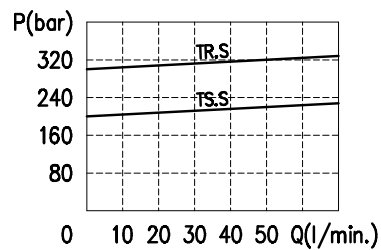
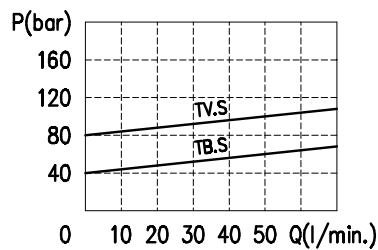
**Material:** internal components made out of high-grade steel duly treated and fabricated.

For more information please ask our technical office.

Variations and modifications of technical features and dimensions are reserved. **OLEOSTAR S.p.A.** also reserves the right to stop production of each and any model listed in the catalogue with no notice.

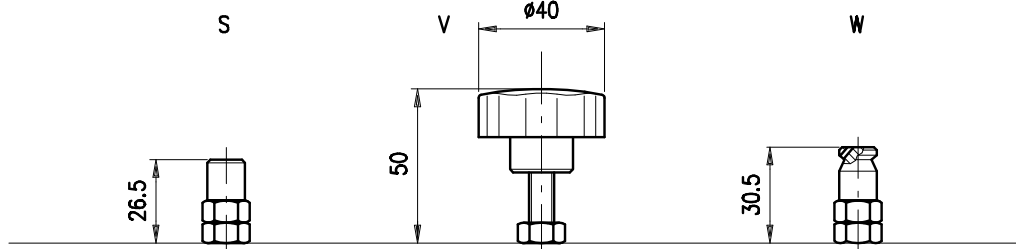
Copyrights on the text contained herein belong to **OLEOSTAR S.p.A.** . Partial and full reproductions or copies of this catalogue are forbidden.

• RATING DIAGRAMS

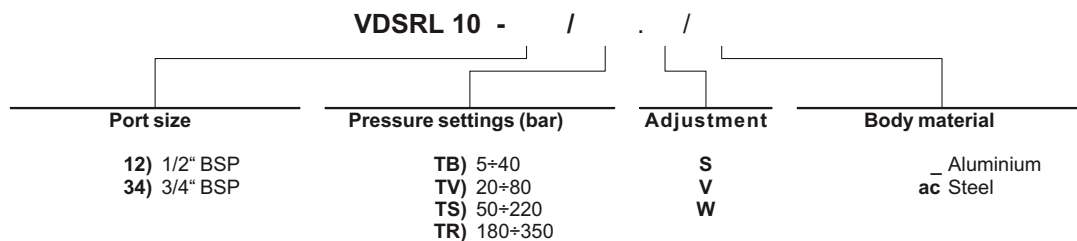


Oil viscosity 46 cSt

• ADJUSTMENTS



• CODE NUMBER



230-0250