

Rohrleitungsventile – Druckfolgeventil direktgesteuert –

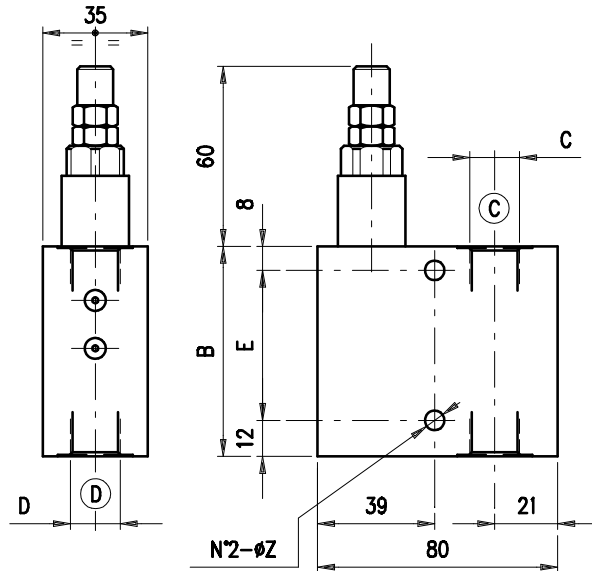


	Bestellnr.	Typ	Bezeichnung	Gehäuse	max. Betriebsdruck bar	max. Durchfluss l/min	Code		
direktgesteuert	230-0240-1045	VDSRL 5-38/TB.S	3/8"-Einstellb. 5-50bar-Hutmutter	Alu	210	25	1200021100		
	230-0240-1050	VDSRL 5-38/TV.S	3/8"-Einstellb. 20-80bar-Hutmutter				1200021101		
	230-0240-1055	VDSRL 5-38/TS.S	3/8"-Einstellb. 50-220bar-Hutmutter				1200021102		
	230-0240-1060	VDSRL 5-38/TR.S	3/8"-Einstellb. 180-350bar-Hutmutter				1200021103		
	230-0240-1065	VDSRL 5-14/TS.S	1/4"-Einstellb. 50-220bar-Hutmutter				1200021107		
	230-0240-1070	VDSRL 5-38/TV.V	3/8"-Einstellb. 20-80bar-Handrad				1200021108		
	230-0240-1075	VDSRL 5-38/TS.V	3/8"-Einstellb. 50-220bar-Handrad				1200021109		
	230-0240-1080	VDSRL 5-12/TB.S	1/2"-Einstellb. 5-50bar-Hutmutter				1200021150		
	230-0240-1085	VDSRL 5-12/TV.S	1/2"-Einstellb. 20-80bar-Hutmutter				1200021151		
	230-0240-1090	VDSRL 5-12/TS.S	1/2"-Einstellb. 50-220bar-Hutmutter			1200021152			
	230-0240-1095	VDSRL 5-12/TR.S	1/2"-Einstellb. 180-350bar-Hutmutter			1200021153			
	230-0240-1100	VDSRL 5-12/TV.V	1/2"-Einstellb. 20-80bar-Handrad			1200021154			
	230-0240-1105	VDSRL 5-12/TS.V	1/2"-Einstellb. 50-220bar-Handrad			1200021155			
	230-0240-1110	VDSRL 5-12/TB.V	1/2"-Einstellb. 5-50bar-Handrad			1200021159			
	230-0240-1115	VDSRL 5-38/TR.S/ac	3/8"-Einstellb. 180-350bar-Hutmutter			Stahl	350	25	1200022101
	230-0240-1120	VDSRL 5-38/TS.S/ac	3/8"-Einstellb. 50-220bar-Hutmutter						1200022102
	230-0240-1125	VDSRL 5-12/TS.S/ac	1/2"-Einstellb. 50-220bar-Hutmutter					35	1200022150
	230-0240-1130	VDSRL 5-12/TR.S/ac	1/2"-Einstellb. 180-350bar-Hutmutter						1200022151

230-0240

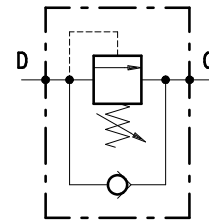
SEQUENCE
VDSRL 5 -

• DIMENSIONS (mm)

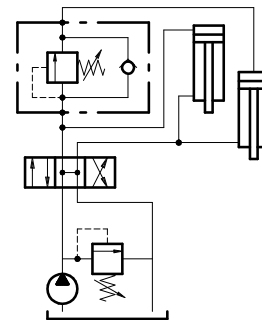


VDSRL	B	C	D	E	Z
5-38	70	G 3/8	G 3/8	50	6.5
5-12	75	G 1/2	G 1/2	55	8.5

• HYDRAULIC DIAGRAM



• ASSEMBLY DIAGRAM



• DESCRIPTION

Direct control sequence valve.

• OPERATION

Allows for oil flow from D into C when the pressure in D achieves the spring setting value. Should back pressure arise in C, the valve opening pressure shall be same as the setting pressure plus the back pressure.

• PERFORMANCE

Maximum flow:

- VDSRL 5-38=25 l/min.
- VDSRL 5-12=35 l/min.

Maximum Pressure:

- 210 bar (aluminium valve)
- 350 bar (steel valve)

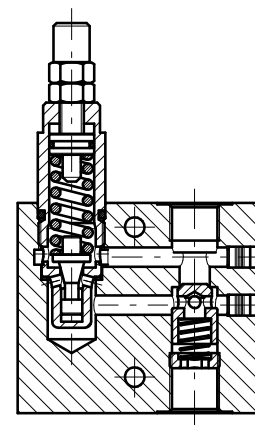
Application range with standard springs:

- 5 bar (test setting: 30 bar at 5 l/min.)
- 20 + 80 bar (test setting: 60 bar at 5 l/min.)
- 50 + 220 bar (test setting: 160 bar at 5 l/min.)
- 180 + 350 bar (test setting: 280 bar at 5 l/min.)

To perform setting of the valve see the pressure drop/ flow diagram.

Working temperature:

- min. -25°C max. 90°C with standard BUNA N gaskets
- min. -20°C max. 120°C with optional VITON gaskets



• RECOMMENDATIONS

Fluid: best use mineral oil with viscosity ranging between 10 and 200 cSt.

Filter: see page Z.9000.000.

Weight:

- VDSRL 5-38=0.65 kg and 1.45 kg for aluminium and steel valves respectively
- VDSRL 5-12=0.70 kg and 1.50 kg for aluminium and steel valves respectively

Cartridge used: see page 1.1000.100.

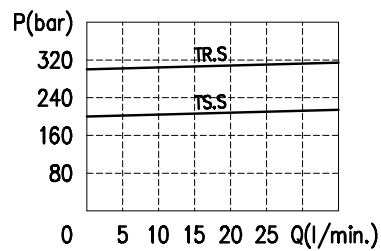
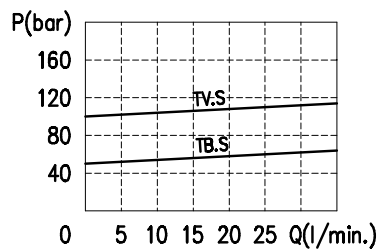
Material: internal components made out of high-grade steel duly treated and fabricated.

For more information please ask our technical office.

Variations and modifications of technical features and dimensions are reserved. **OLEOSTAR S.p.A.** also reserves the right to stop production of each and any model listed in the catalogue with no notice.

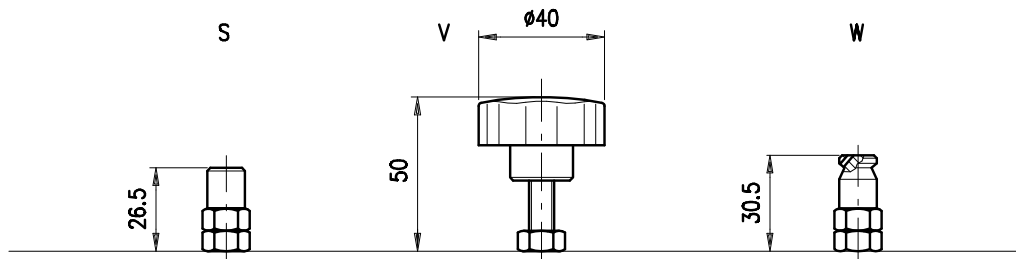
Copyrights on the text contained herein belong to **OLEOSTAR S.p.A.** . Partial and full reproductions or copies of this catalogue are forbidden.

• RATING DIAGRAMS



Oil viscosity 46 cSt

• ADJUSTMENTS



• CODE NUMBER

