

Hydraulikventile

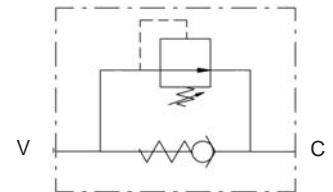
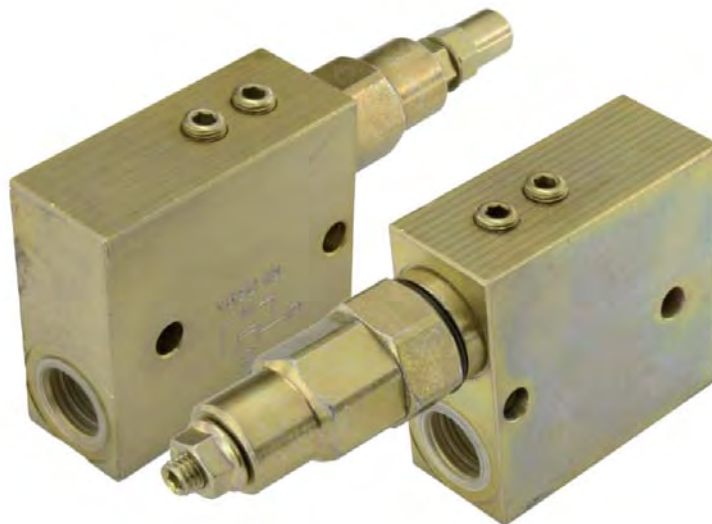
VS2C – Druckfolgeventil

Material: Stahl galvanisiert

Hydraulic valves

VS2C – sequenz valve

material: steel galvanized



Leitungseinbau / inline mounting

Bestell-Nr. code	Typ type	Gewinde thread	Q max. l/min	P max. bar	kg
210-130-01300	VS2C38D	3/8"	35	350	1,17
210-130-01350	VS2C12D	1/2"	70	350	1,20
210-130-01400	VS2C34D	3/4"	110	350	2,90

Feder / spring

A= 5-50 bar – B= 20-100 bar – C= 40-180 bar – **D= 50-250 bar (standard)** – E= 80-300 bar

210-130