

Hydraulikventile

**VAU/DE – Schockventil
doppeltwirkend**

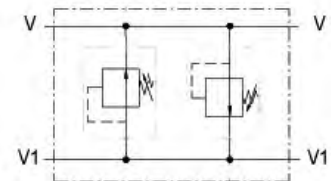
Material: Stahl galvanisiert

Hydraulic valves

**VAU/DE – dual cross-
over relief valve**

- double acting -

material: steel galvanized



Leitungseinbau / inline mounting

Bestell-Nr. code	Typ type	Gewinde thread	Q max. l/min	P max. bar	kg
210-110-01400	VAU-DE14D	1/4"	30	300	1,01
210-110-01450	VAU-DE38D	3/8"	45	300	1,12
210-110-01500	VAU-DE12D	1/2"	70	300	1,15
210-110-01550	VAU-DE34D	3/4"	110	300	1,4
Feder / spring					
A= 5-50 bar – B= 20-100 bar – C= 40-180 bar – D= 50-250 bar (standard) – E= 80-300 bar					

210-110