

Filter

– Rücklauffilter 3-Loch –

Serie HF 502



Bestellnr. (ohne Filterelement)	Typ	Innengewinde G	Code
300-040-1000	HF502-10.060-GD-B-H-Z-XD-DA	1/2"	HHRK0620
300-040-1050	HF502-20.077-GD-B-H-Z-XD-DA	1/2"	HHRK2020
300-040-1100	HF502-20.077-GE-B-H-Z-XD-DA	3/4"	HHRK2300
300-040-1150	HF502-20.077-GE-B-H-Z-XD-DA	3/4"	HHRK2300
300-040-1200	HF502-20.122-GD-B-H-Z-XD-DA	1/2"	HHRK3020
300-040-1250	HF502-20.122-GE-B-H-Z-XD-DA	3/4"	HHRK3300
300-040-1300	HF502-20.122-GF-B-H-Z-XD-DA	1"	HHRK3580
300-040-1350	HF502-20.122-GD-B-H-Z-XD-DA	1/2"	HHRK3020
300-040-1400	HF502-20.122-GF-B-H-Z-XD-DA	1"	HHRK3580
300-040-1450	HF502-20.201-GD-B-H-Z-XD-DA	1/2"	HF502-20.201-GD-B-H-
300-040-1500	HF502-20.201-GF-B-H-Z-XD-DA	1"	HHRK4580
300-040-1550	HF502-30.195-GF-B-H-Z-XD-DA	1"	HHRK6020
300-040-1600	HF502-30.195-GG-B-H-Z-XD-DA	1 1/4"	HHRK6220
300-040-1650	HF502-30.239-GG-B-H-Z-XD-DA	1 1/4"	HHRK7421
300-040-1700	HF502-40.122-GG-B-H-Z-XD-DA	1 1/4"	HF502-40.122-GG-B-H-
300-040-1750	HF502-40.122-GH-B-H-Z-XD-DA	1 1/2"	HHRK8010
300-040-1800	HF502-40.194-GG-B-H-Z-XD-DA	1 1/4"	HF502-40.194-GG-B-H-
300-040-1850	HF502-40.194-GH-B-H-Z-XD-DA	1 1/2"	HHRK8810
300-040-1900	HF502-40.195-GG-B-H-Z-XD-DA	1 1/4"	HHRK9110
300-040-1950	HF502-40.195-GL-B-H-Z-XD-DA	2"	HHRK9350
300-040-2000	HF502-40.195-GL-B-H-Z-XD-DA	2"	HHRK9350
300-040-2050	HF502-40.239-GL-B-H-Z-XD-DA	2"	HHRK9750
300-040-2100	HF502-40.239-GL-B-H-Z-XD-DA	2"	HHRK9750

Filter

– Rücklauffilterelement 3-Loch –



Bestellnr.	für Filtergehäuse	Typ	max. Durchfluss l/min	Code
300-045-1000	HF502-10.060	HEK02-10.060-AS-FG003-VM-B17-B	12	HHC01200
300-045-1050		HEK02-10.060-AS-FG006-VM-B17-B	15	HHC01211
300-045-1100		HEK02-10.060-AS-FG010-VM-B17-B	20	HHC24017
300-045-1150		HEK02-10.060-AS-FG025-VM-B17-B	23	HHC01215
300-045-1200		HEK02-10.060-AS-SP010-VM-B17-B	25	HHC03423
300-045-1250		HEK02-10.060-AS-SP025-VM-B17-B	30	HHC03430
300-045-1300		HEK02-10.060-AS-MI025-VM-B17-B	?	HHC01198
300-045-1350		HEK02-10.060-AS-MI060-VM-B17-B	?	HHC03401
300-045-1400	HF502-20.077	HEK02-20.077-AS-FG003-VM-B17-B	28	HHC01225
300-045-1450		HEK02-20.077-AS-FG006-VM-B17-B	30	HHC01227
300-045-1500		HEK02-20.077-AS-FG010-VM-B17-B	35	HHC03542
300-045-1550		HEK02-20.077-AS-FG025-VM-B17-B	40	HHC03547
300-045-1600		HEK02-20.077-AS-RP010-VM-B17-B	45	HHC03565
300-045-1650		HEK02-20.077-AS-SP010-VM-B17-B	45	HHC03554
300-045-1700		HEK02-20.077-AS-MI025-VM-B17-B	?	HEK 02-20.077-AS-MI0
300-045-1750		HEK02-20.077-AS-FB060-VM-B17-B	60	HHC03552
300-045-1800	HF502-20.122	HEK02-20.122-AS-FG003-VM-B17-B	45	HHC01241
300-045-1850		HEK02-20.122-AS-FG006-VM-B17-B	50	HHC01243
300-045-1900		HEK02-20.122-AS-FG010-VM-B17-B	55	HHC03590
300-045-1950		HEK02-20.122-AS-FG025-VM-B17-B	60	HHC03574
300-045-2000		HEK02-20.122-AS-RP010-VM-B17-B	65	HHC03577
300-045-2050		HEK02-20.122-AS-RP025-VM-B17-B	70	HHC03584
300-045-2100		HEK02-20.122-AS-MI025-VM-B17-B	?	HHC01196
300-045-2150		HEK02-20.122-AS-MI060-VM-B17-B	?	HHC03575
300-045-2200	HF502-20.201	HEK02-20.201-AS-FG003-VM-B17-B	60	HEK 02-20.201-AS-FG0
300-045-2250		HEK02-20.201-AS-FG006-VM-B17-B	65	HEK 02-20.201-AS-FG0
300-045-2300		HEK02-20.201-AS-FG010-VM-B17-B	70	HHC01353
300-045-2350		HEK02-20.201-AS-FG025-VM-B17-B	80	HHC01355
300-045-2400		HEK02-20.201-AS-RP010-VM-B17-B	100	HHC03612
300-045-2450		HEK02-20.201-AS-RP025-VM-B17-B	110	HHC03619
300-045-2500		HEK02-20.201-AS-MI025-VM-B17-B	?	HEK 02-20.201-AS-MI0
300-045-2550		HEK02-20.201-AS-MI060-VM-B17-B	?	HEK 02-20.201-AS-MI0
300-045-2600	HF502-30.195	HEK02-30.195-AS-FG003-VM-B17-B	90	HHC01273
300-045-2650		HEK02-30.195-AS-FG006-VM-B17-B	105	HHC01275
300-045-2700		HEK02-30.195-AS-FG010-VM-B17-B	115	HHC10206
300-045-2750		HEK02-30.195-AS-FG025-VM-B17-B	125	HHC10211
300-045-2800		HEK02-30.195-AS-RP010-VM-B17-B	130	HHC10192
300-045-2850		HEK02-30.195-AS-RP025-VM-B17-B	140	HHC10191
300-045-2900		HEK02-30.195-AS-MI025-VM-B17-B	?	HHC10221
300-045-2950		HEK02-30.195-AS-MI060-VM-B17-B	?	HHC10151

300-040

TANK MOUNTED RETURN LINE FILTERS SERIES HF 502



Replaces: HF 502 01 T E

The tank mounted filters HF 502 series are specifically designed to be directly connected on the hydraulic circuits return line and provide versatility to safeguard the circuit components from contaminating particles.

- ADJUSTABLE SETTING BY-PASS VALVE - REMOVABLE AND REUSABLE
- MINIMUM EXTENSION FROM THE TANK
- INTERCHANGEABLE WITH HF 550 AND HF 554 SERIES

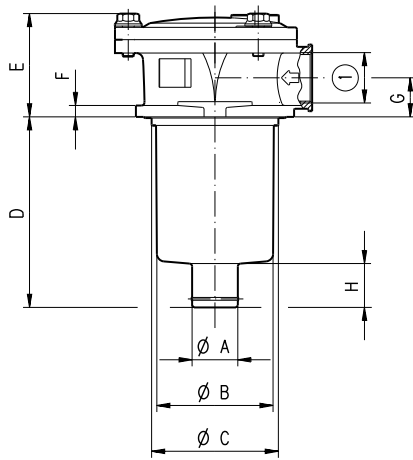
COMPLETE FILTER		
MATERIALS	Cover	Aluminum
	Housing	Aluminum
	Bowl	Reinforced nylon - Steel
	Seals	Buna - Viton
FLUID COMPATIBILITY CONFORMING TO ISO 2943	With reference to ISO 6743/4	With fluid (HH-HL-HM-HR-HV-HG), and water emulsion (HFAE-HFAS) use filters with Buna seals. With water - glycol (HFC) ask for anodizing treatment.
		With synthetic fluid (HS-HFDR-HFDU-HFDS) use filters with Viton seals.
FLOW RANGE	min.	20 [l/min]
	max.	600 [l/min]
WORKING PRESSURE	max.	800 [kPa] 8 bar
TESTING PRESSURE		1200 [kPa] 12 bar
BURST PRESSURE		1600 [kPa] 16 bar
OPERATING TEMPERATURE	With Buna seals	- 20 + 80 [°C]
	With Viton seals	- 20 + 110 [°C]
FILTER ELEMENTS		
MATERIALS	End cap - Inner tube	Zinc plated steel
	Filter media	Steel
		Phosphor bronze
		Cellulose - Reinforced cellulose
	Micro-fibre glass	
REMOVAL RATING		Conforming to ISO 16889
ELEMENT COLLAPSE PRESSURE RATING	Conforming to ISO 2941	1000 [kPa] 10 bar

Edition: 02/10.2001

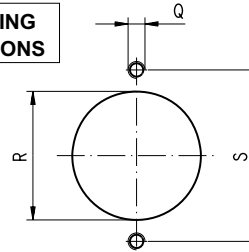
IKRON S.r.l.

43044 Lemignano di Collecchio (PR) - Italy Via C. Prampolini, 2
Telephone: (+ 39) 0521 304911 - Fax (+ 39) 0521 304900 - <http://www.casappa.com> - e-mail: ikron@casappa.com

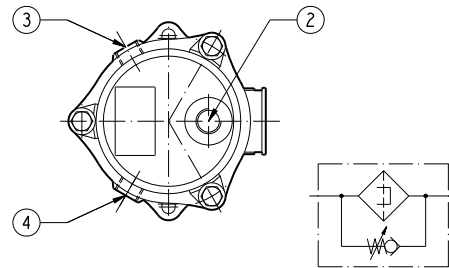
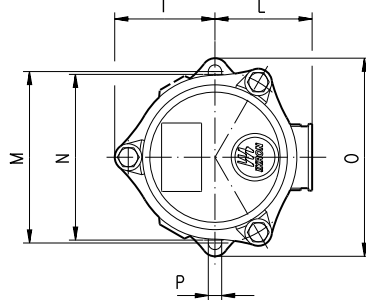
TECHNICAL DATA



TANK MOUNTING HOLE DIMENSIONS



Filter type	Q	R	S
		mm	mm
HF 502-10.060	M 6	67,5	89 ^{±1}
HF 502-10.129			
HF 502-20.077	M 8	88,5	115 ^{±1}
HF 502-20.122			
HF 502-20.201			

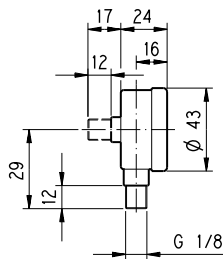


DI14-D01/1001

Replaces: 01/10.99

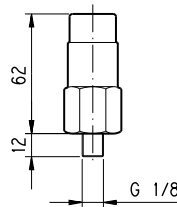
PRESSURE/VACUUM GAUGE

M
N



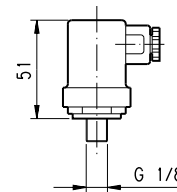
VISUAL INDICATOR

P



ELECTRICAL INDICATOR

S



DI14-D02/0501

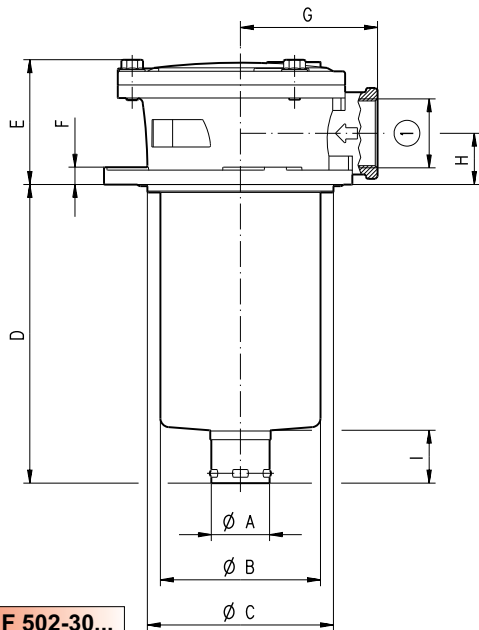
Filter type	Ø A	Ø B	Ø C	D	E	F	G	H	I	L	M	N	O	P
	mm	mm	mm	mm	mm	mm	mm	mm	mm	mm	mm	mm	mm	mm
HF 502-10.060	24	62	66,5	83	54,5	8	20,5	22	52,6	51	90	88	104	7
HF 502-10.129				152,2										
HF 502-20.077	27,4	80	87,5	106,5	73	11	28,5	27	67	67	116	114	135	8,5
HF 502-20.122				151,5										
HF 502-20.201				232,5										

Filter type	① (GAS - BSPP)		(GAS - BSPP) Indicators		② Filler cap
	Standard (*)	On request (*)	Standard	On request	
HF 502-10.060	G 1/2	G 3/8 - G 3/4	②④ G 1/8	②④ G 1/4	Not available
HF 502-10.129	G 3/4	G 3/8 - G 1/2			
HF 502-20.077	G 3/4	G 1/2	②③④ G1/8	②③④ G 1/4	G 1/2
HF 502-20.122	G 1	G 3/4			
HF 502-20.201					

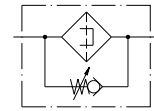
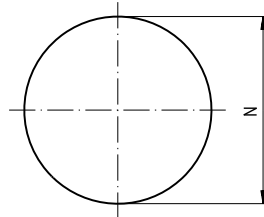
(*) NPT, metric and SAE UN-UNF threads are available (consult our technical department).

DI14-002 - 02/10.01

TECHNICAL DATA

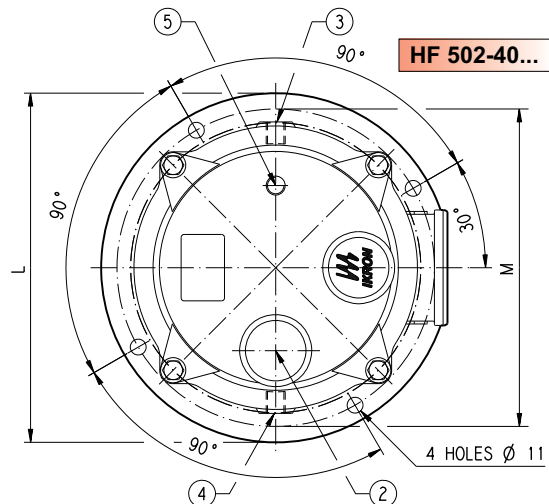
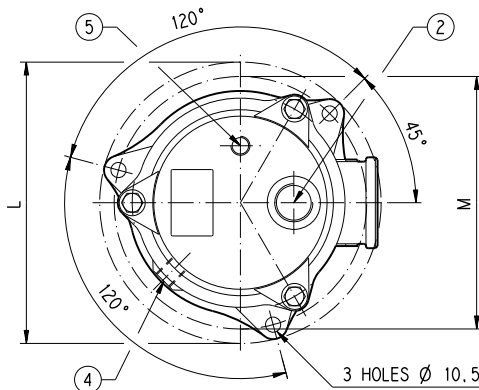


TANK MOUNTING HOLE DIMENSIONS



D114-D05/1001

HF 502-30...



HF 502-40...

Filter type	Ø A	Ø B	Ø C	D	E	F	G	H	I	L	M	Ø N
	mm	mm	mm	mm	mm	mm	mm	mm	mm	mm	mm	mm
HF 502-30.162	40,5	111	129	229,5	86,5	12	95	35,5	36,5	195	175	130
HF 502-30.195				273,5								
HF 502-30.239				273,5								
HF 502-40.122	50	151	174	171	108	11,5	119	41	44,5	242	220	175
HF 502-40.162	64			238								
HF 502-40.194	50			238								
HF 502-40.195	64			238								
HF 502-40.239	64			298								

Filter type	① (GAS - BSPP)		(GAS - BSPP) Indicators		② Filler cap
	Standard (*)	On request (*)	Standard	On request	
HF 502-30.162	G 1 1/4	G 1 - G 1 1/2	④ ⑤ G 1/8	④ ⑤ G 1/4	G 3/4
HF 502-30.195					
HF 502-30.239	G 1 1/2	G 1 - G 1 1/4			
HF 502-40.122	G 1 1/2	G 2	③ ④ ⑤ G 1/8	③ ④ ⑤ G 1/4	G 1 1/4
HF 502-40.162					
HF 502-40.194					
HF 502-40.195					
HF 502-40.239					

(*) NPT, metric and SAE UN-UNF threads are available (consult our technical department).

Replaces: 01/10.99

D114-002 - 02/10.01

HOW TO ORDER A COMPLETE FILTER

1	2	3	4	5	6	7
HF502-10.060	- AS	- FB060	- B17	- GC	- B	H
8	9	10	11			
Z	- XD	- GA	- N			

1	Filter type	CODE
	See table page 2 and 3	HF502-...
2	Filtering surface	CODE
	Standard	AS
3	Degree of filtration	CODE
3	[µm] Micro-fibre glass	FG003
6	[µm] Micro-fibre glass	FG006
10	[µm] Micro-fibre glass	FG010
25	[µm] Micro-fibre glass	FG025
60	[µm] Phosphor bronze	FB060
125	[µm] Phosphor bronze	FB125
90	[µm] Steel wire mesh	MS090
10	[µm] Cellulose	SP010
25	[µm] Cellulose	SP025
10	[µm] Reinforced cellulose	RP010
25	[µm] Reinforced cellulose	RP025
4	By-pass valve	CODE
	Setting 170 [kPa]; 1,7 [bar]	B17
	Setting 210 [kPa]; 2,1 [bar]	B21
	Setting 350 [kPa]; 3,5 [bar]	B35

5	Inlet port	CODE
Thread GAS (BSPP)		
	G 3/8	GC
	G 1/2	GD
	G 3/4	GE
	G 1	GF
	G 1 1/4	GG
	G 1 1/2	GH
	G 2	GL
6	Seals	CODE
	Buna	B
	Viton	V
7	Filler cap	CODE
	None	H
	With filler cap	L
8	Magnetic set	CODE
	None	Z
	With magnetic set	R

9	Indicators arrang.	CODE
	None	XN
	On the cover ② (⑤**)	XD
	On the housing-right side ③*	XA
	On the housing-left side ④	XB
10	Dim. indicat. ports	CODE
Thread GAS (BSPP)		
	G 1/8	GA
	G 1/8 WITH PLUG	DA
	G 1/4	GB
	G 1/4 WITH PLUG	DB
11	Indicators	CODE
	None	G
	Pressure/vac. gauge rear. conn.	M
	Pressure/vac. gauge rad. conn.	N
	Visual indicator	P
	Electrical indicator	S

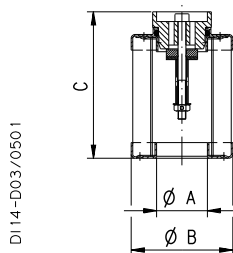
Replaces: 01/10.99

- * Only for HF 502-20 and HF 502-40
- ** Only for HF 502-30 and HF 502-40

- Standard
- On request

Note: On request steel bowl is available for HF502-10 and HF502-20.

FILTERING ELEMENTS - TECHNICAL DATA



Element type	Ø A mm	Ø B mm	C mm	Standard filtering surface	
				cm ²	
				FB	SP / RP
HE K02-10.060	26	52	75	225	400
HE K02-10.129	24,6		148,4	490	860
HE K02-20.077	29	70	94,7	445	850
HE K02-20.122			139,7	615	1350
HE K02-20.201	41	99	219,7	930	2035
HE K02-30.162	41		179,2	1700	3000
HE K02-30.195	41		212,2	2050	4485
HE K02-30.239	41		256,2	2510	5500
HE K02-40.122	52	130	139,2	2175	4810
HE K02-40.162	65		179,2	2625	5335
HE K02-40.194	52		212,2	3160	6425
HE K02-40.195	52		212,2	3160	6425
HE K02-40.239	65		256,2	4390	7875
HE K02-40.239	65		256,2	4390	7875

D14-002 - 02/10.01

HOW TO ORDER A REPLACEMENT ELEMENT

1	2	3	4	5	6
HE K02-10.060	- AS	- FB060	- VM	- B17	- B

1	Element type	CODE
	See table	HE K...
2	Superficie filtrante	CODE
	Standard	AS
3	Grado di filtrazione	CODE
	See table ref. 3 ♦	

4	By-pass valve	CODE
	With valve and spring	VM
	With valve - without spring	VV
	Without valve - without spring	OO
5	Setting valve	CODE
	See table ref. 4 ♦	

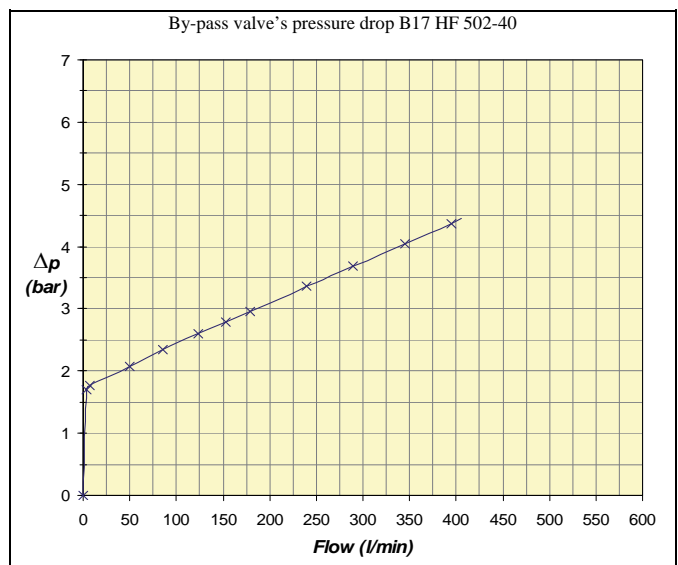
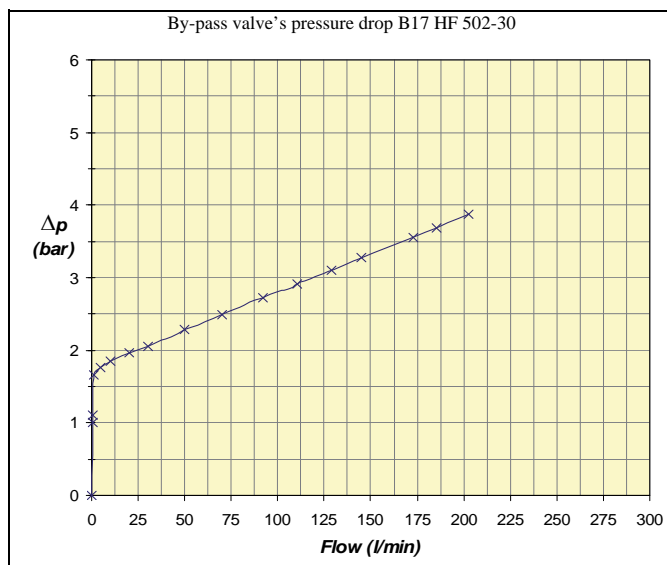
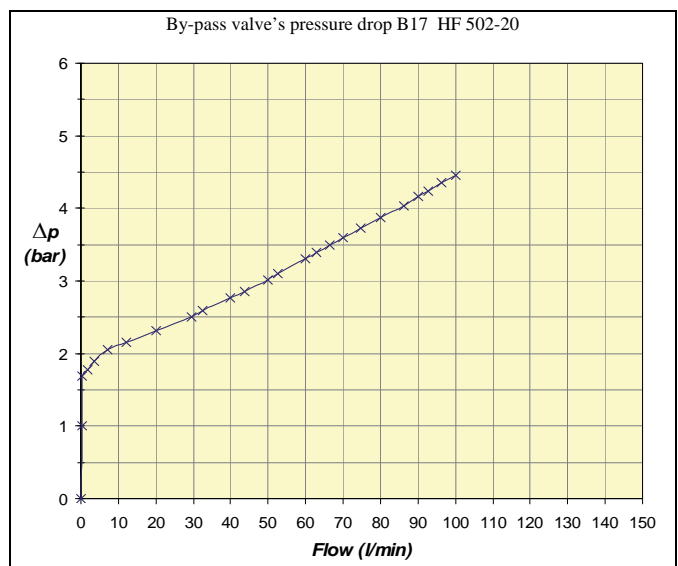
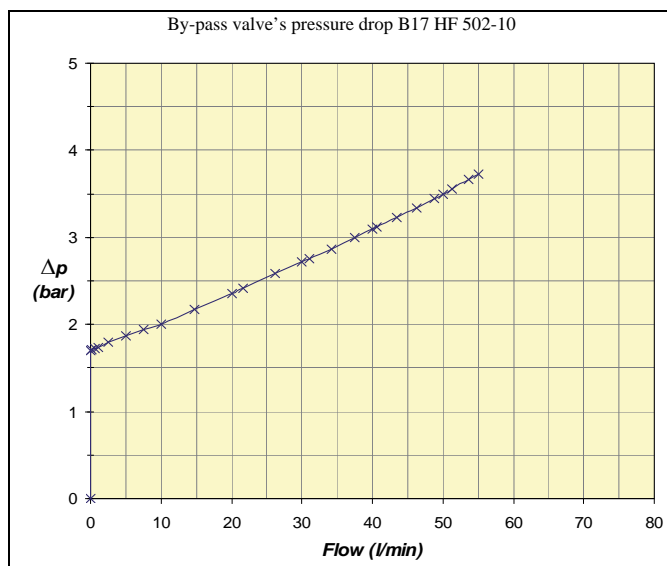
6	Seals	CODE
	See table ref. 6 ♦	

♦ Table how to order a complete filter.

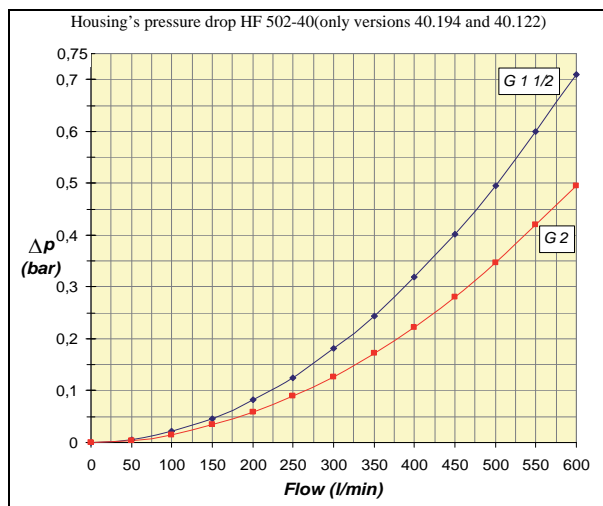
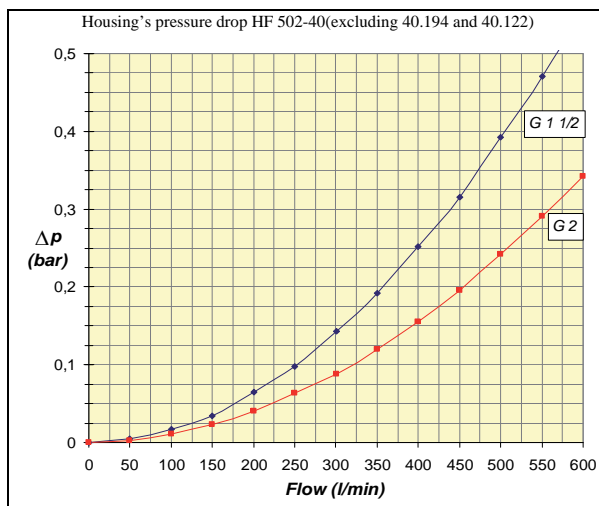
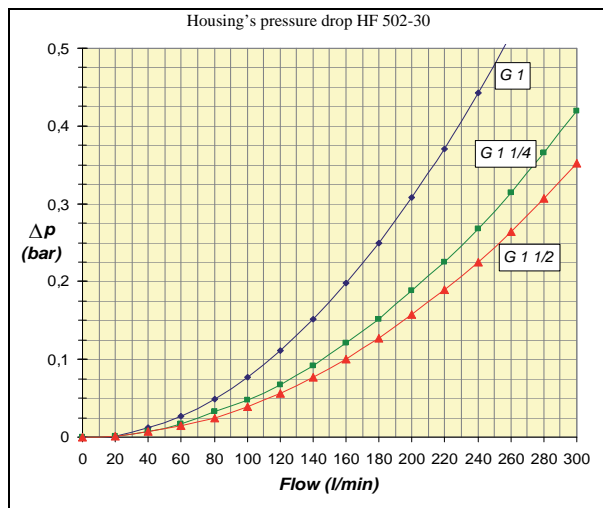
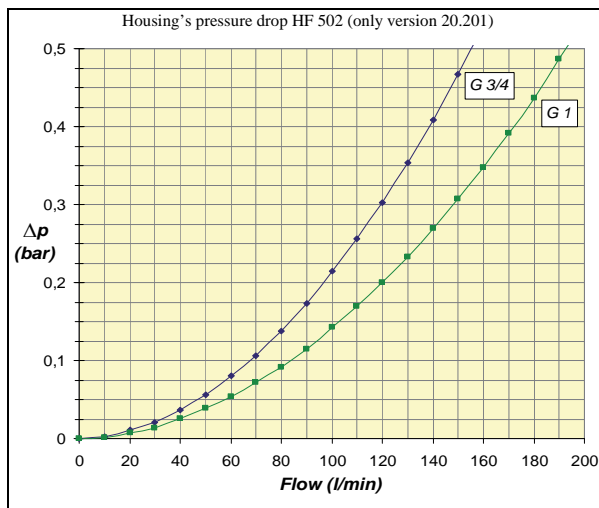
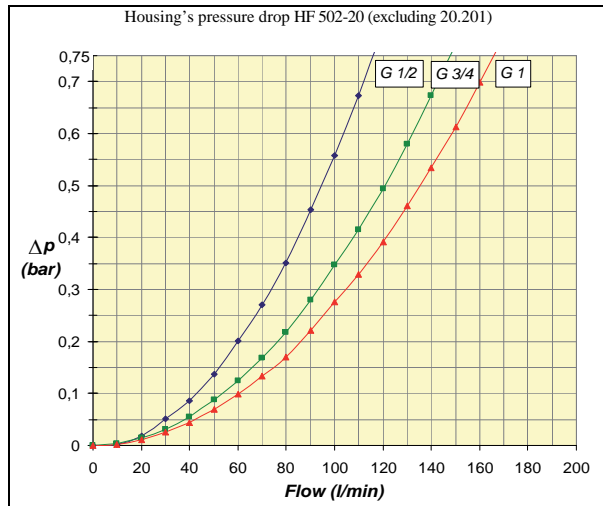
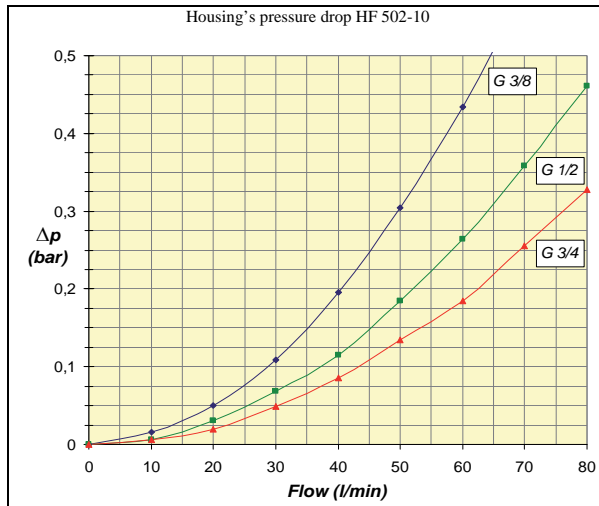
PRESSURE DROP CURVES

The pressure drop for return filters series HF 502 has to be between 0,2 and 0,4 bar.

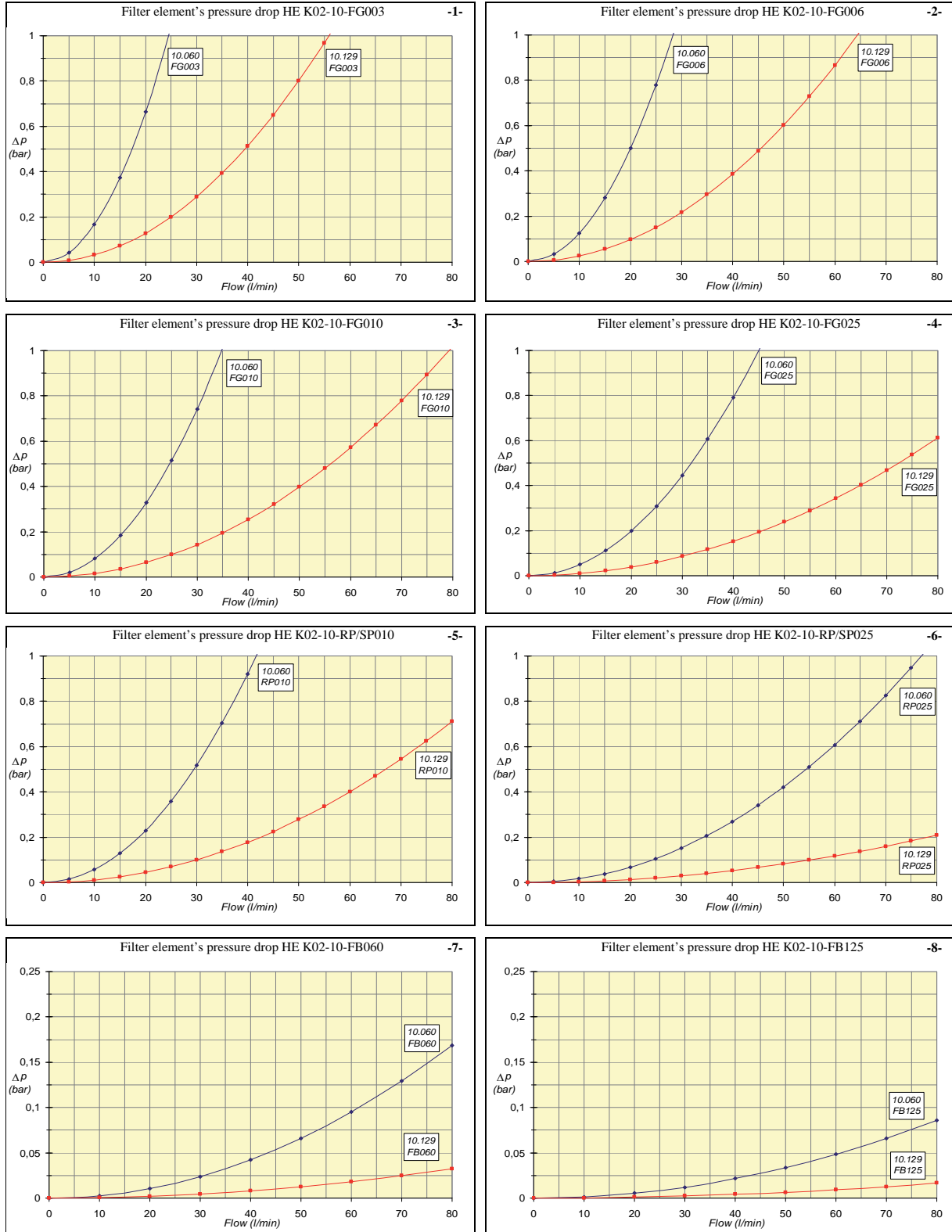
- 1) The **by-pass pressure** drop is directly proportional to fluid specific gravity and it's irrelevant to determine the total pressure drop.

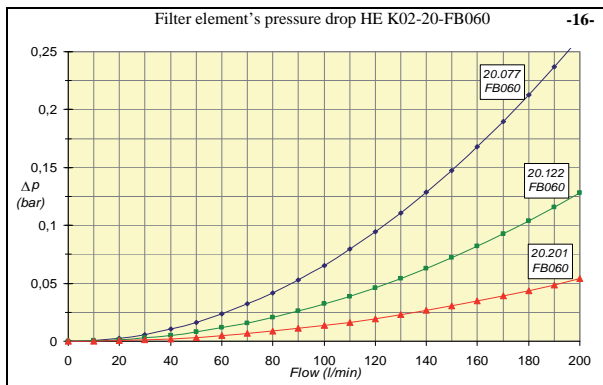
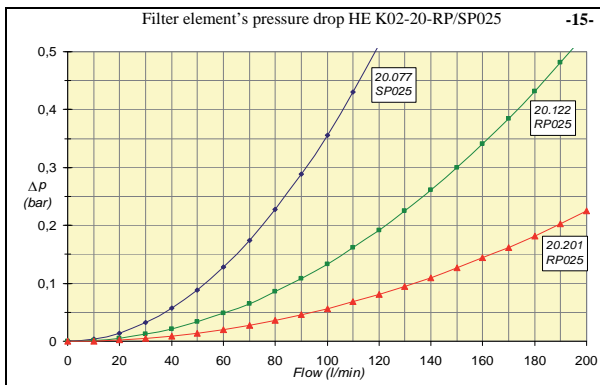
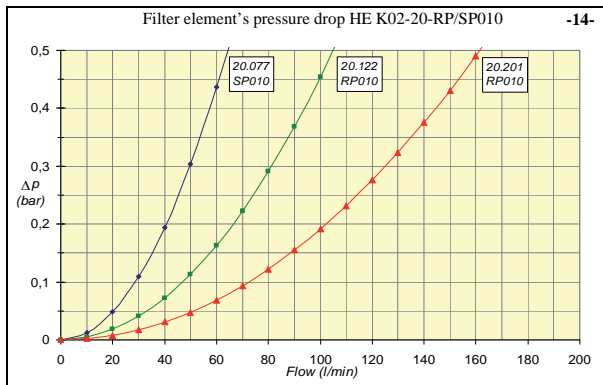
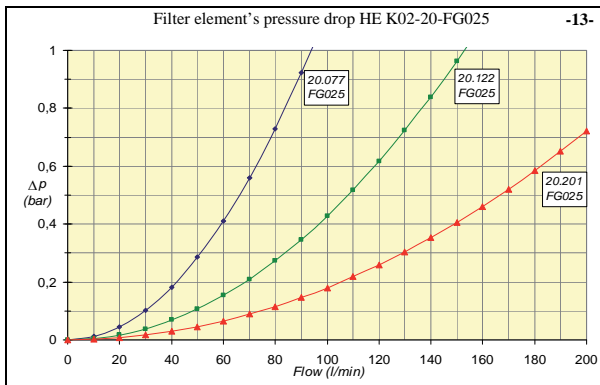
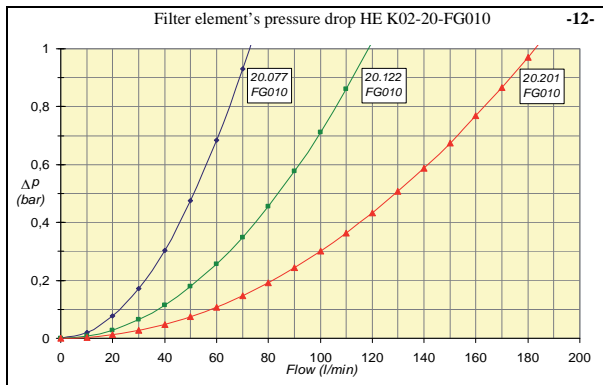
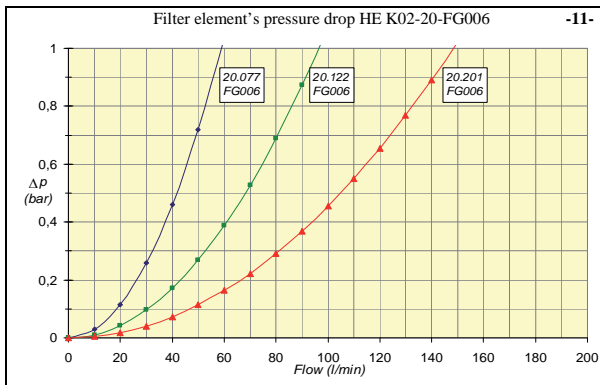
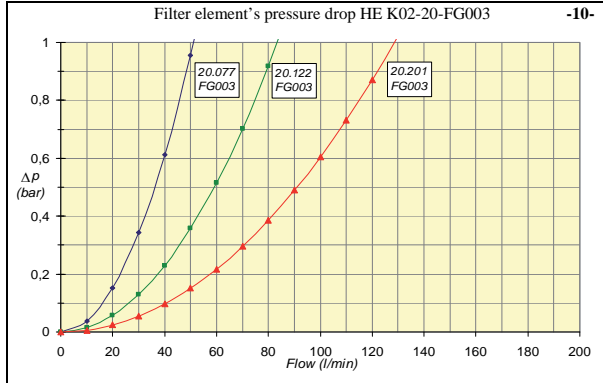
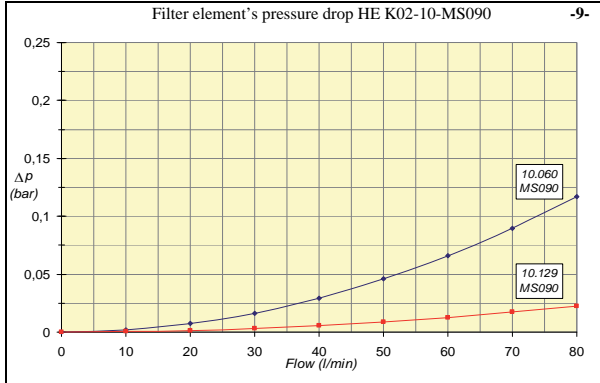


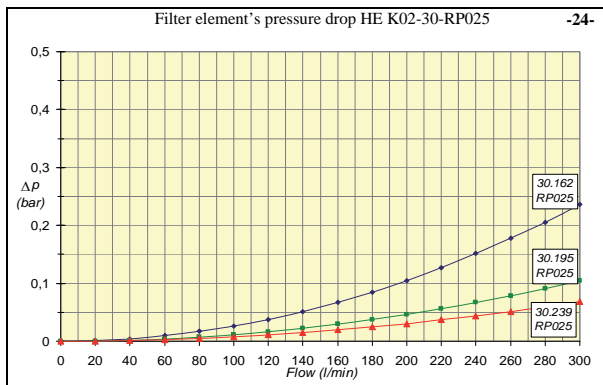
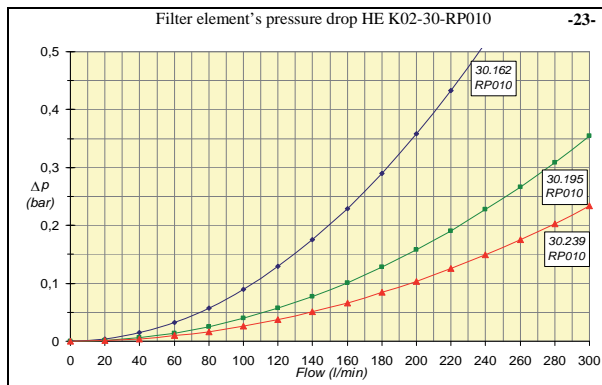
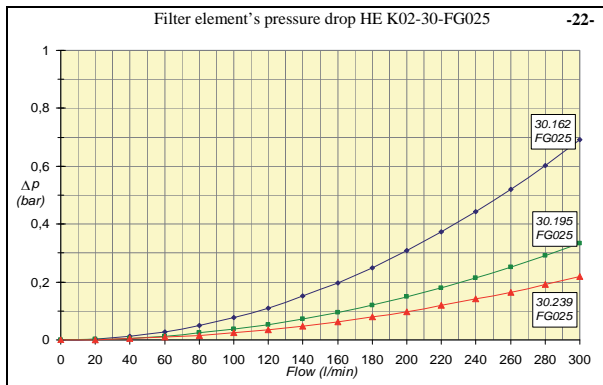
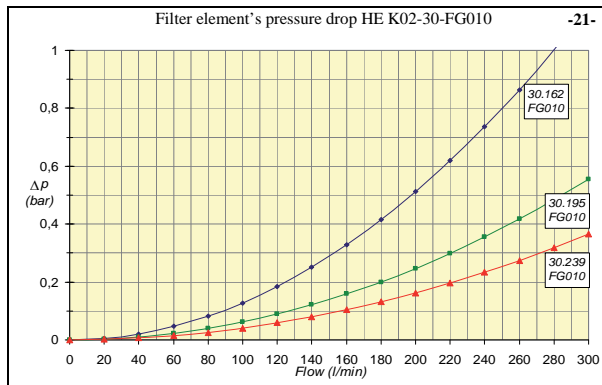
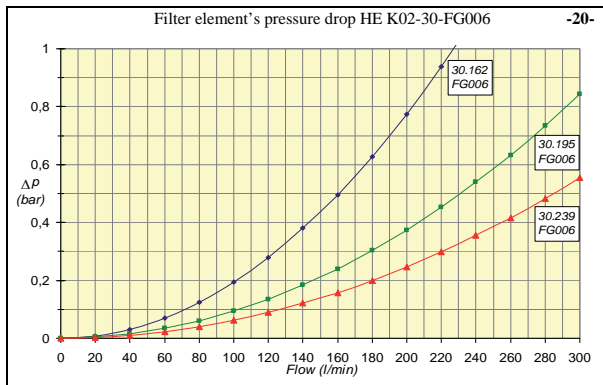
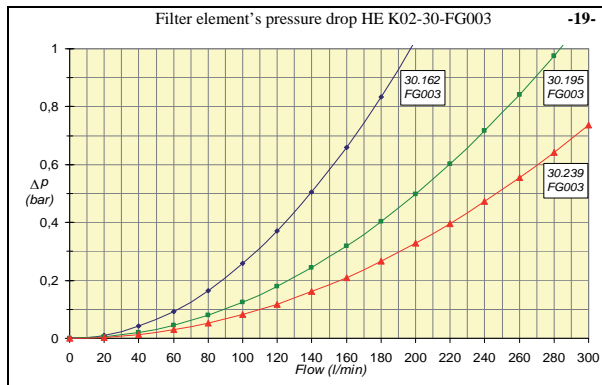
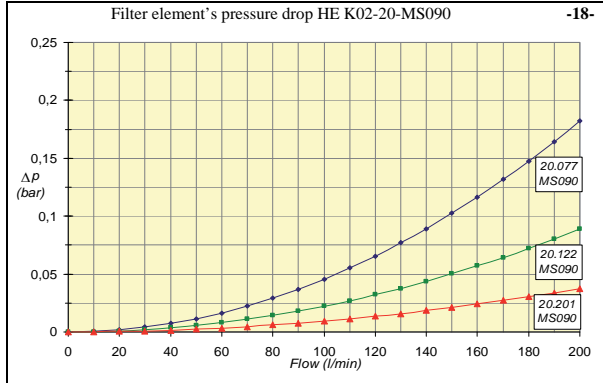
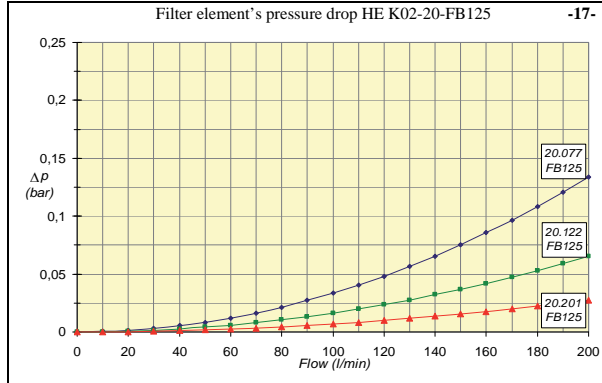
2) The **housing's pressure drop** is determined by the sum of the inlet and outlet port dimension.

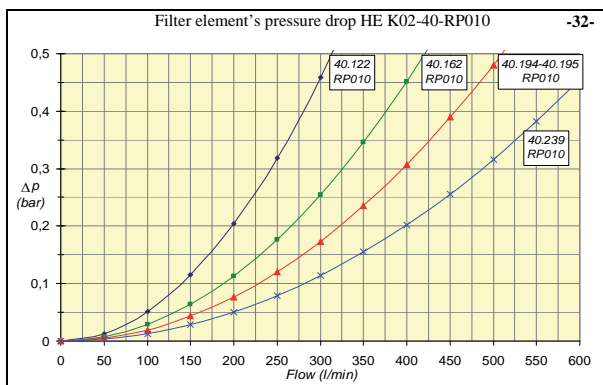
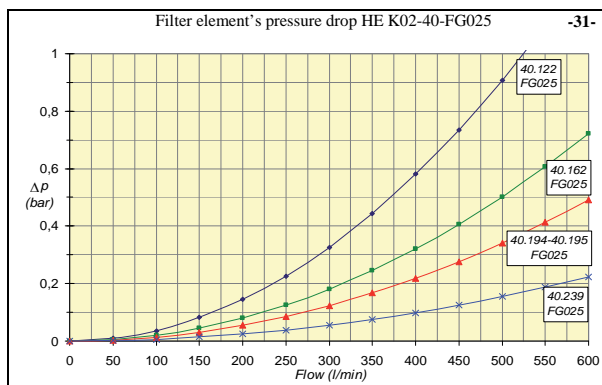
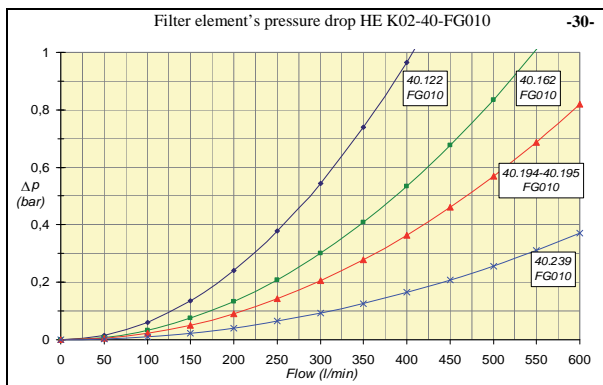
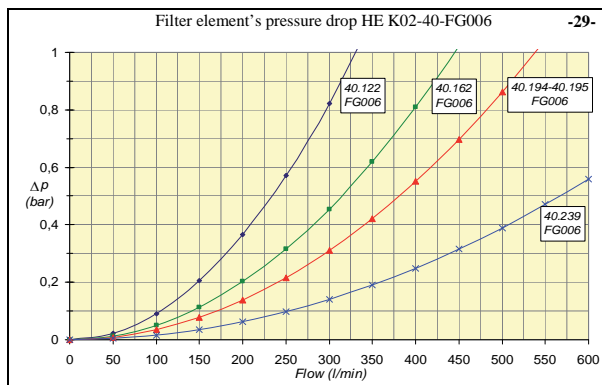
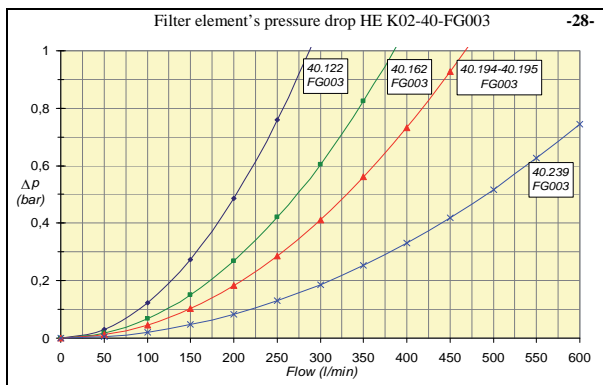
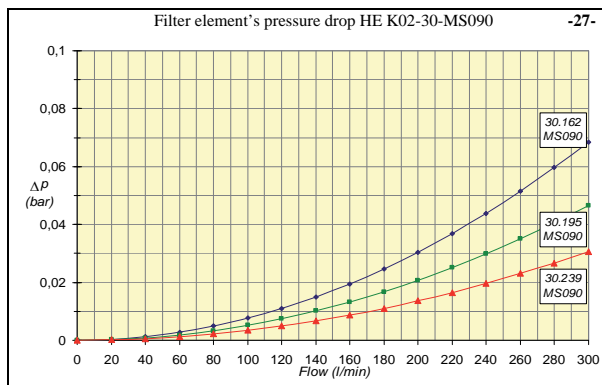
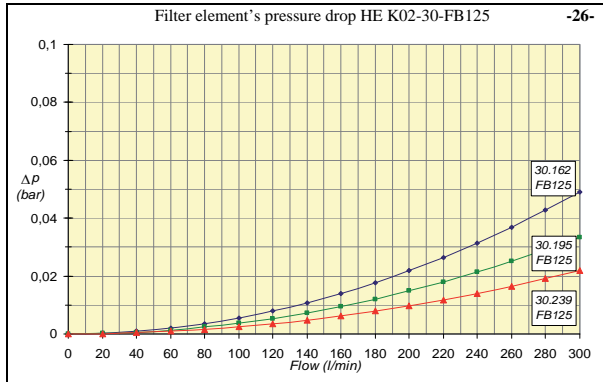
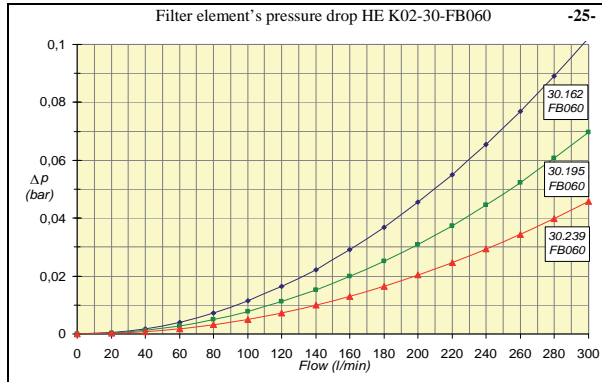


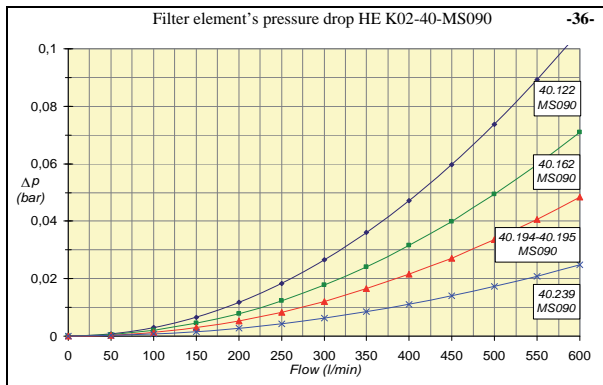
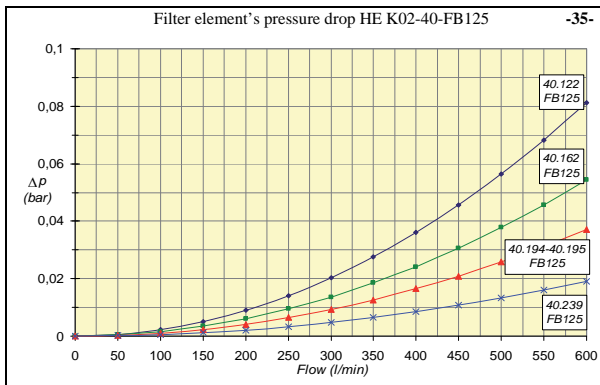
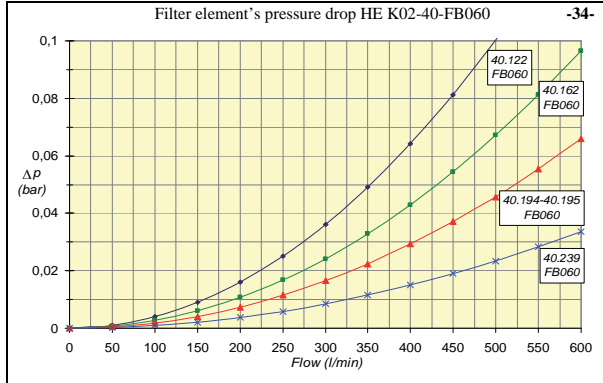
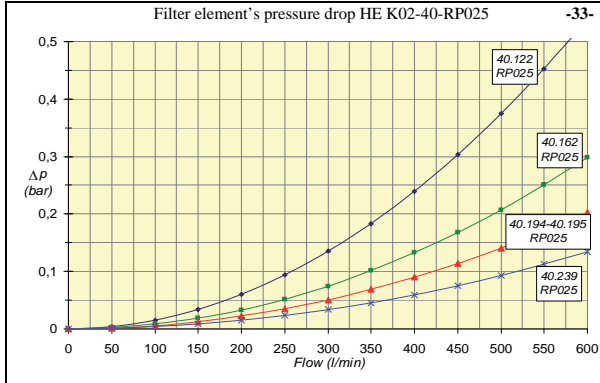
3) The filter element's pressure drop is determined by standard media and AS surface, they have been calculated experimentally and they are valid for clean elements.











FILTRI HF 502 / FILTERS HF 502

Bocca Ingresso Inlet Port	3 MICRON ASS./ABS.		6 MICRON ASS./ABS.		10 MICRON ASS./ABS.		Peso Filtro Filter Weight (Kg)
	Portata Flow (lt/min)	Filtro Tipo Filter Type	Portata Flow (lt/min)	Filtro Tipo Filter Type	Portata Flow (lt/min)	Filtro Tipo Filter Type	
G 3/8"	7	HF502-10.060 FG003	8	HF502-10.060 FG006	10	HF502-10.060 FG010	0,4
G 1/2"	10		12		15		
G 3/4"	12		15		20		
G 3/8"	15	HF502-10.129 FG003	17	HF502-10.129 FG006	20	HF502-10.129 FG010	0,5
G 1/2"	20		22		25		
G 3/4"	25		27		30		
G 1/2"	20	HF502-20.077 FG003	22	HF502-20.077 FG006	25	HF502-20.077 FG010	0,9
G 3/4"	25		27		30		
G 1"	28		30		35		
G 1/2"	30	HF502-20.122 FG003	32	HF502-20.122 FG006	37	HF502-20.122 FG010	1
G 3/4"	35		40		45		
G 1"	45		50		55		
G 3/4"	55	HF502-20.201 FG003	60	HF502-20.201 FG006	65	HF502-20.201 FG010	1,2
G 1"	60		65		70		
G 1"	60	HF502-30.162 FG003	65	HF502-30.162 FG006	70	HF502-30.162 FG010	2
G 1"1/4	65		75		85		
G 1"1/2	75		85		95		
G 1"	70	HF502-30.195 FG003	80	HF502-30.195 FG006	85	HF502-30.195 FG010	2,1
G 1"1/4	80		95		105		
G 1"1/2	90		105		115		
G 1"	80	HF502-30.239 FG003	85	HF502-30.239 FG006	90	HF502-30.239 FG010	2,2
G 1"1/4	90		100		110		
G 1"1/2	100		110		120		
G 1"1/2	100	HF502-40.122 FG003	110	HF502-40.122 FG006	120	HF502-40.122 FG010	3,1
G 2"	130		145		160		
G 1"1/2	110	HF502-40.162 FG003	120	HF502-40.162 FG006	130	HF502-40.162 FG010	3,2
G 2"	150		165		180		
G 1"1/2	150	HF502-40.194 FG003	165	HF502-40.194 FG006	180	HF502-40.194 FG010	3,4
G 2"	210		225		250		
G 1"1/2	155	HF502-40.195 FG003	170	HF502-40.195 FG006	185	HF502-40.195 FG010	3,4
G 2"	215		230		255		
G 1"1/2	210	HF502-40.239 FG003	230	HF502-40.239 FG006	260	HF502-40.239 FG010	3,5
G 2"	270		300		340		

FILTRI HF 502 / FILTERS HF 502

Bocca Ingresso Inlet Port	25 MICRON ASS./ABS.		10 MICRON NOM.		25 MICRON NOM.		Peso Filtro Filter Weight (Kg)
	Portata Flow (lt/min)	Filtro Tipo Filter Type	Portata Flow (lt/min)	Filtro Tipo Filter Type	Portata Flow (lt/min)	Filtro Tipo Filter Type	
G 3/8"	13	HF502-10.060 FG025	15	HF502-10.060 SP010-RP010	20	HF502-10.060 SP025-RP025	0,4
G 1/2"	18		20		25		
G 3/4"	23		25		30		
G 3/8"	25	HF502-10.129 FG025	30	HF502-10.129 SP010-RP010	35	HF502-10.129 SP025-RP025	0,5
G 1/2"	30		35		40		
G 3/4"	35		40		45		
G 1/2"	30	HF502-20.077 FG025	35	HF502-20.077 SP010-RP010	40	HF502-20.077 SP025-RP025	0,9
G 3/4"	35		40		45		
G 1"	40		45		50		
G 1/2"	40	HF502-20.122 FG025	45	HF502-20.122 RP010	50	HF502-20.122 RP025	1
G 3/4"	50		55		60		
G 1"	60		65		70		
G 3/4"	75	HF502-20.201 FG025	90	HF502-20.201 RP010	100	HF502-20.201 RP025	1,2
G 1"	80		100		110		
G 1"	75	HF502-30.162 FG025	85	HF502-30.162 RP010	95	HF502-30.162 RP025	2
G 1"1/4	90		95		105		
G 1"1/2	100		105		115		
G 1"	95	HF502-30.195 FG025	100	HF502-30.195 RP010	120	HF502-30.195 RP025	2,1
G 1"1/4	115		120		130		
G 1"1/2	125		130		140		
G 1"	100	HF502-30.239 FG025	110	HF502-30.239 RP010	130	HF502-30.239 RP025	2,2
G 1"1/4	120		130		140		
G 1"1/2	130		140		150		
G 1"1/2	130	HF502-40.122 FG025	140	HF502-40.122 RP010	150	HF502-40.122 RP025	3,1
G 2"	180		210		230		
G 1"1/2	140	HF502-40.162 FG025	150	HF502-40.162 RP010	160	HF502-40.162 RP025	3,2
G 2"	200		220		240		
G 1"1/2	190	HF502-40.194 FG025	200	HF502-40.194 RP010	220	HF502-40.194 RP025	3,4
G 2"	270		300		320		
G 1"1/2	195	HF502-40.195 FG025	205	HF502-40.195 RP010	225	HF502-40.195 RP025	3,4
G 2"	275		305		325		
G 1"1/2	280	HF502-40.239 FG025	320	HF502-40.239 RP010	410	HF502-40.239 RP025	3,5
G 2"	360		400		500		

FILTRI HF 502 / FILTERS HF 502

Bocca Ingresso Inlet Port	60 MICRON		90 MICRON		125 MICRON		Peso Filtro Filter Weight (Kg)
	Portata Flow (lt/min)	Filtro Tipo Filter Type	Portata Flow (lt/min)	Filtro Tipo Filter Type	Portata Flow (lt/min)	Filtro Tipo Filter Type	
G 3/8"	25	HF502-10.060 FB060	25	HF502-10.060 MS090	25	HF502-10.060 FB125	0,4
G 1/2"	30		30		30		
G 3/4"	35		35		35		
G 3/8"	45	HF502-10.129 FB060	50	HF502-10.129 MS090	50	HF502-10.129 FB125	0,5
G 1/2"	50		55		55		
G 3/4"	55		60		60		
G 1/2"	50	HF502-20.077 FB060	55	HF502-20.077 MS090	55	HF502-20.077 FB125	0,9
G 3/4"	55		60		60		
G 1"	60		65		65		
G 1/2"	70	HF502-20.122 FB060	75	HF502-20.122 MS090	75	HF502-20.122 FB125	1
G 3/4"	80		85		85		
G 1"	95		100		100		
G 3/4"	120	HF502-20.201 FB060	130	HF502-20.201 MS090	130	HF502-20.201 FB125	1,2
G 1"	130		140		140		
G 1"	130	HF502-30.162 FB060	135	HF502-30.162 MS090	135	HF502-30.162 FB125	2
G 1 1/4"	140		150		150		
G 1 1/2"	150		160		160		
G 1"	160	HF502-30.195 FB060	170	HF502-30.195 MS090	170	HF502-30.195 FB125	2,1
G 1 1/4"	170		180		180		
G 1 1/2"	190		200		200		
G 1"	180	HF502-30.239 FB060	190	HF502-30.239 MS090	190	HF502-30.239 FB125	2,2
G 1 1/4"	190		200		200		
G 1 1/2"	210		220		220		
G 1 1/2"	250	HF502-40.122 FB060	260	HF502-40.122 MS090	260	HF502-40.122 FB125	3,1
G 2"	340		350		350		
G 1 1/2"	260	HF502-40.162 FB060	270	HF502-40.162 MS090	270	HF502-40.162 FB125	3,2
G 2"	350		360		360		
G 1 1/2"	310	HF502-40.194 FB060	325	HF502-40.194 MS090	325	HF502-40.194 FB125	3,4
G 2"	410		425		425		
G 1 1/2"	315	HF502-40.195 FB060	330	HF502-40.195 MS090	330	HF502-40.195 FB125	3,4
G 2"	415		430		430		
G 1 1/2"	460	HF502-40.239 FB060	490	HF502-40.239 MS090	500	HF502-40.239 FB125	3,5
G 2"	560		590		600		