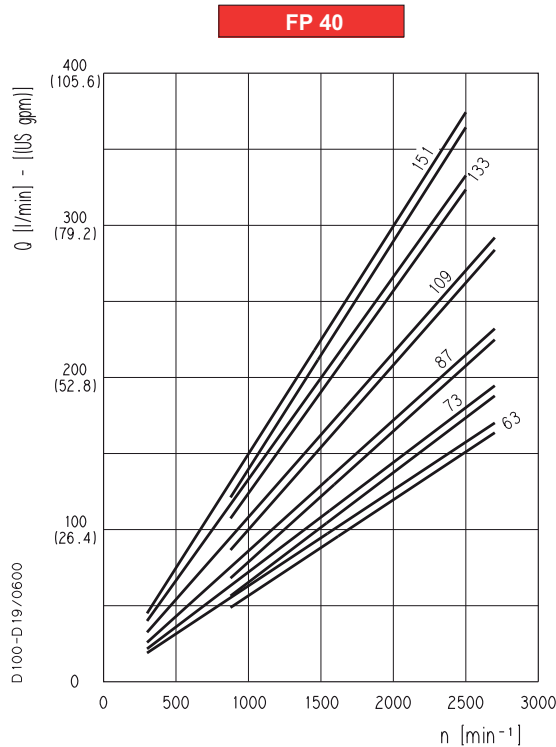


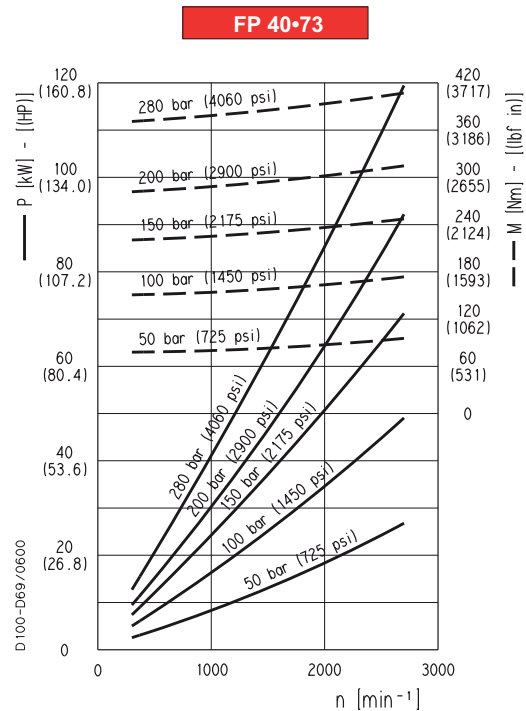
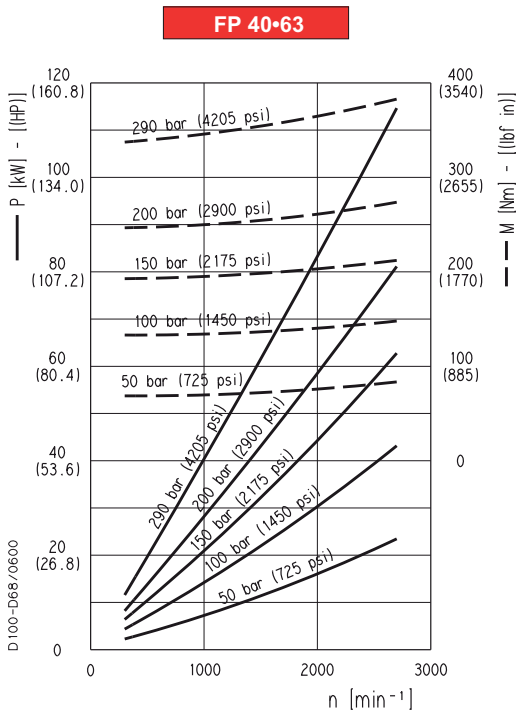
FORMULA 40 GEAR PUMPS PERFORMANCE CURVES

FP 40



Each curve has been obtained at 50°C, using oil with viscosity 36 mm^2/s at 40°C and at these pressures.

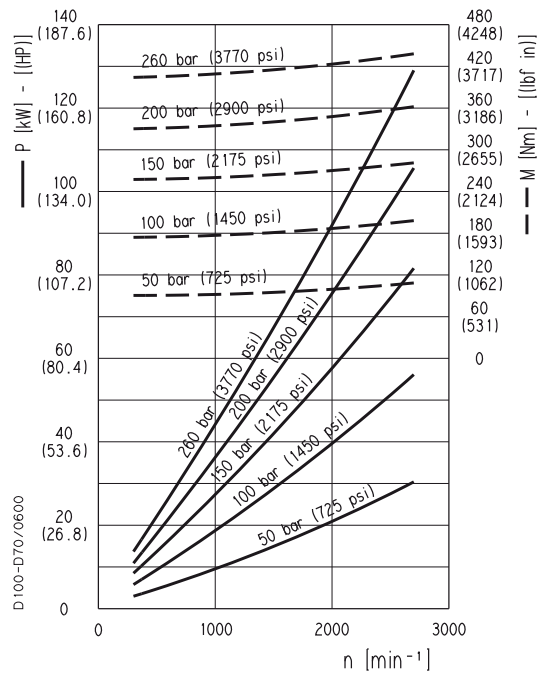
- FP 40•63 20-290 bar
- FP 40•73 20-280 bar
- FP 40•87 20-260 bar
- FP 40•109 20-240 bar
- FP 40•133 20-220 bar
- FP 40•151 20-180 bar



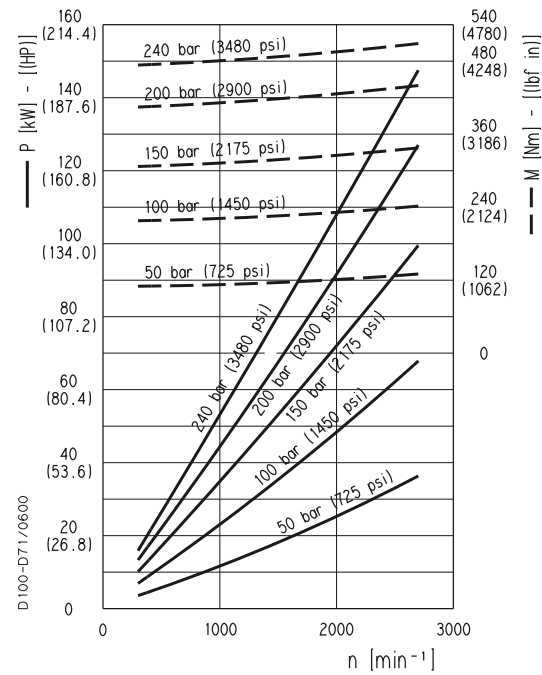
FORMULA 40 GEAR PUMPS PERFORMANCE CURVES

FP 40

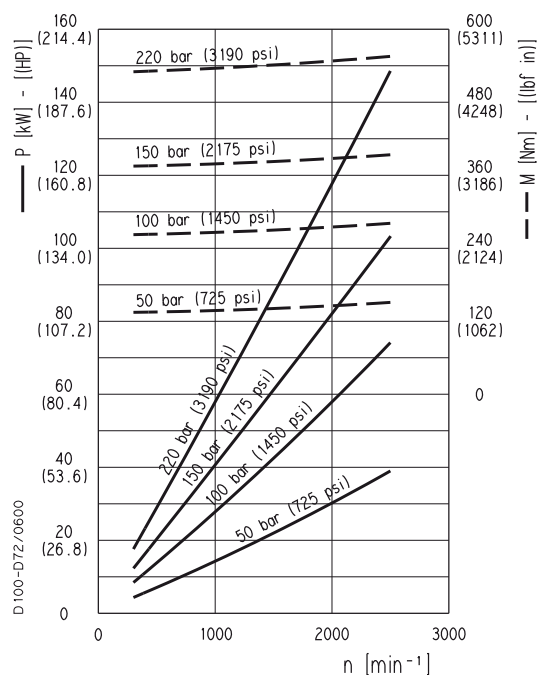
FP 40•87



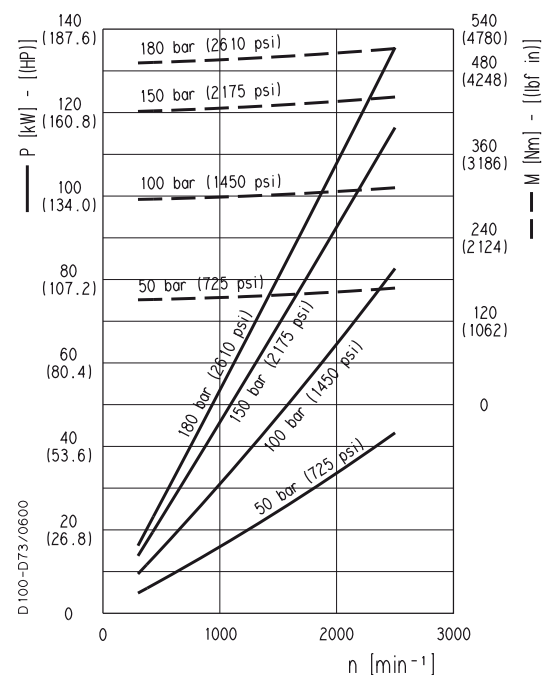
FP 40•109



FP 40•133

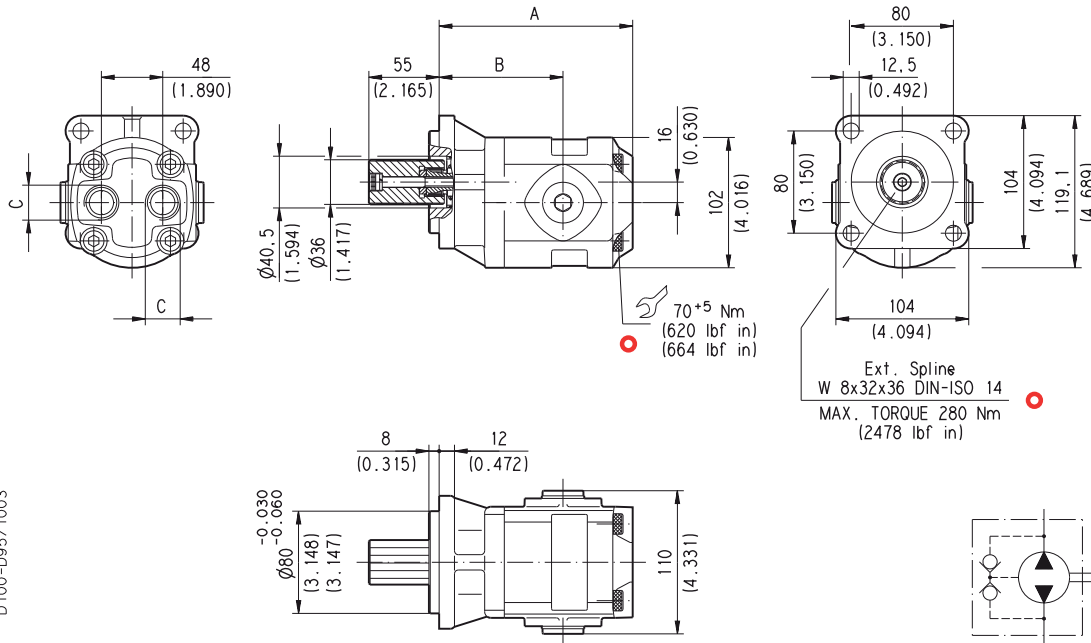


FP 40•151



034-020

GAS STRAIGHT THREAD PORTS
British standard pipe parallel (55°) conforms to UNI - ISO 228



D 100-D95/1003

Radial and/or axial load are not allowed.

Standard version pumps have reversible rotation and internal drain.

The drawing shows the version with rear ports.
Removing the lateral plugs all possible combination ports are allowed.

Pump type	A	B	C	Mass
	mm (in)	mm (in)		kg
FP 20•8	104 (4.094)	80 (3.150)	G 1/2	5,31
FP 20•11,2	107,5 (4.232)	83,5 (3.287)		5,70
FP 20•16	117 (4.606)	87,5 (3.445)		6,00
FP 20•20	123,5 (4.862)	94 (3.701)		6,35
FP 20•25	131,5 (5.177)	87 (3.425)	G 3/4	6,80
FP 20•31,5	141,5 (5.571)	97 (3.819)		7,18
FP 20•36	146,4 (5.764)	91,4 (3.598)		7,44
FP 20•40	151,5 (5.965)	97 (3.819)		7,80

How to order:

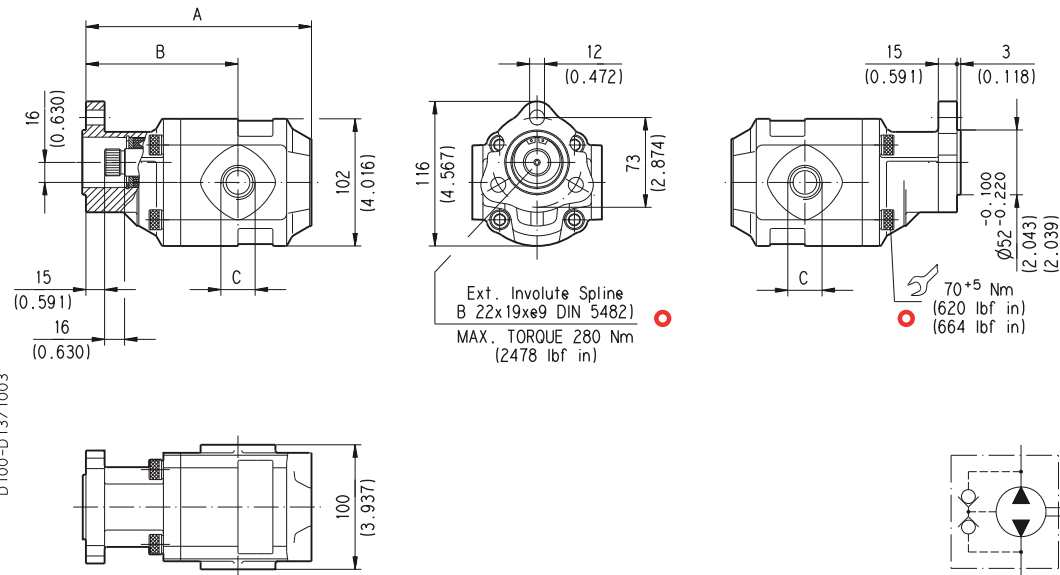
FP 20•8 B0 - 16 Z0 - LP GD/GD - N

FORMULA 20

HYDRAULIC GEAR PUMPS ITALIAN STANDARD

13 T1 - L

GAS STRAIGHT THREAD PORTS
British standard pipe parallel (55°) conforms to UNI - ISO 228



Standard version pumps have reversible rotation and internal drain.

Pump type	A	B	C	Mass
	mm (in)	mm (in)		kg
FP 20•8	132,5 (5.217)	105 (4.134)	G 1/2	4,8
FP 20•11,2	136 (5.354)	108,5 (4.272)		5
FP 20•16	145,5 (5.728)	112,5 (4.429)		5,2
FP 20•20	152 (5.984)	119 (4.685)		5,3
FP 20•25	160 (6.299)	112 (4.409)	G 3/4	5,9
FP 20•31,5	170 (6.693)	122 (4.803)		6
FP 20•36	175,5 (6.909)	116,5 (4.587)		6,3
FP 20•40	181 (7.126)	122 (4.803)		6,6

How to order:

FP 20•8 B0 - 13 T1 - L GD/GD - N

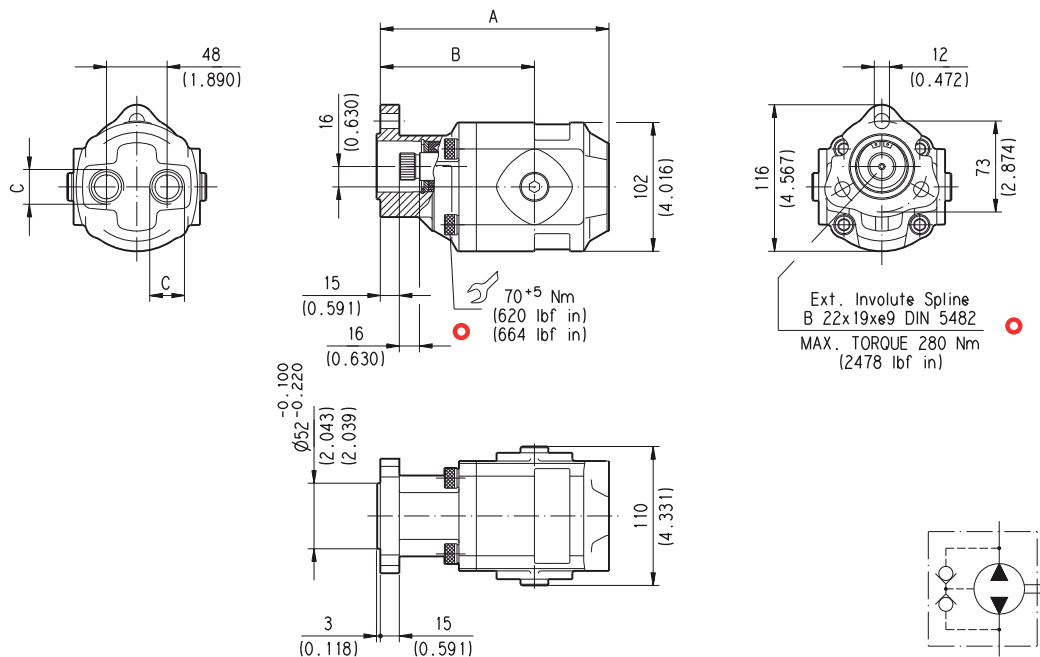
034-020

FORMULA 20

HYDRAULIC GEAR PUMPS ITALIAN STANDARD

13 T1 - P

GAS STRAIGHT THREAD PORTS
British standard pipe parallel (55°) conforms to UNI - ISO 228



D100-D47/1003

Standard version pumps have reversible rotation and internal drain.

The version with rear ports allow, removing the lateral plugs to have all possible combination ports.

Pump type	A	B	C	Mass	
	mm (in)	mm (in)		kg	
FP 20•8	B0-13 T1-P GD/GD-N	129 (5.079)	105 (4.134)	G 1/2	4,8
FP 20•11,2		132,5 (5.217)	108,5 (4.272)		5
FP 20•16		142 (5.591)	112,5 (4.429)		5,2
FP 20•20		148,5 (5.846)	119 (4.685)		5,3
FP 20•25	B0-13 T1-P GE/GE-N	156,5 (6.161)	112 (4.409)	G 3/4	5,9
FP 20•31,5	B0-13 T1-(L)P GE/GE-N	166,5 (6.555)	122 (4.803)		6
FP 20•36		172,5 (6.791)	116,5 (4.587)		6,3
FP 20•40		178 (7.008)	122 (4.803)		6,6

How to order:

FP 20•11,2 B0 - 13 T1 - P GD/GD - N

034-020