

MISCELLANEOUS HOSE FITTINGS

HF16



Swivel

THREAD	FLARE	TUBE SIZE	OAL	FITS
3/8" x 24NF	Double	3/16"	57mm	V

HF16B



Swivel - Brass

THREAD	FLARE	TUBE SIZE	OAL	FITS
3/8" x 24NF	Double	3/16"	49mm	V

HF17



Swivel 90°

THREAD	FLARE	TUBE SIZE	OAL	FITS
3/8" x 24NF	Double	3/16"	49mm	V

HF33



Swivel 45°

THREAD	FLARE	TUBE SIZE	OAL	FITS
3/8" x 24NF	Double	3/16"	65mm	V

HF54



Swivel

THREAD	FLARE	TUBE SIZE	OAL	FITS
3/8" x 24NF	Double	3/16"	125mm	US

HF63



Swivel

THREAD	FLARE	TUBE SIZE	OAL	FITS
3/8" x 24NF	Double	3/16"	88mm	V

HF81



Swivel

THREAD	FLARE	TUBE SIZE	OAL	FITS
3/8" x 24NF	Bubble	3/16"	76mm	V

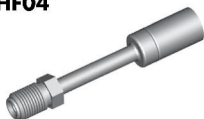
HF84



Left Swivel

THREAD	FLARE	TUBE SIZE	OAL	FITS
3/8" x 24NF	Double	3/16"	-	US

HF04



Swivel

THREAD	FLARE	TUBE SIZE	OAL	FITS
7/16" x 24NS	Double	1/4"	89mm	V

HF06



Swivel 90°

THREAD	FLARE	TUBE SIZE	OAL	FITS
7/16" x 24NS	Double	1/4"	67mm	V

HF07



Swivel 45°

THREAD	FLARE	TUBE SIZE	OAL	FITS
7/16" x 24NS	Double	1/4"	76mm	V

HF15



Swivel

THREAD	FLARE	TUBE SIZE	OAL	FITS
7/16" x 24NS	Double	1/4"	52mm	V

HF39



Swivel

THREAD	FLARE	TUBE SIZE	OAL	FITS
7/16" x 24NS	Double	1/4"	54mm	V

HF89



Swivel

THREAD	FLARE	TUBE SIZE	OAL	FITS
7/16" x 24NS	Double	1/4"	120mm	US

Male Swivel - 3/8" x 24NF

Male Swivel - 7/16" x 24NS

A = Asian

EU = European

US = United States

UNI = Universal

V = Various

MISCELLANEOUS HOSE FITTINGS

HF94



Swivel 60°

THREAD	FLARE	TUBE SIZE	OAL	FITS
7/16" x 24NS	Double	1/4"	-	US

HF97



TO BE DISCONTINUED

Swivel

THREAD	FLARE	TUBE SIZE	OAL	FITS
7/16" x 24NS	Double	1/4"	-	US

HF100



Swivel

THREAD	FLARE	TUBE SIZE	OAL	FITS
7/16" x 24NS	Double	1/4"	81mm	US

HF101



Swivel 90°

THREAD	FLARE	TUBE SIZE	OAL	FITS
7/16" x 24NS	Double	1/4"	-	US

HF119



Swivel

THREAD	FLARE	TUBE SIZE	OAL	FITS
7/16" x 24NS	45° Double	1/4"	160mm	V

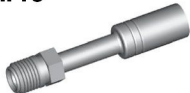
HF145



Swivel 70°

THREAD	FLARE	TUBE SIZE	OAL	FITS
7/16" x 24NS	Double	1/4"	135mm	V

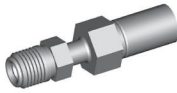
HF18



Swivel

THREAD	FLARE	TUBE SIZE	OAL	FITS
1/2" x 20NF	Double	3/16"	80mm	V

HF28



Swivel

THREAD	FLARE	TUBE SIZE	OAL	FITS
1/2" x 20NF	Double	5/16"	60mm	V

HF29



Swivel 90°

THREAD	FLARE	TUBE SIZE	OAL	FITS
1/2" x 20NF	Double	5/16"	62mm	V

HF92



Swivel 90°

THREAD	FLARE	TUBE SIZE	OAL	FITS
1/2" x 20NF	Double	3/16"	-	US

HF98



Swivel 90°

THREAD	FLARE	TUBE SIZE	OAL	FITS
5/16" x 18NF	Double	1/4"	-	US

HF08



Swivel

THREAD	FLARE	TUBE SIZE	OAL	FITS
M10 x 1	DN	3/16"	70mm	EU

HF34



Swivel

THREAD	FLARE	TUBE SIZE	OAL	FITS
M10 x 1	Double	5/16"	71mm	V

HF52



TO BE DISCONTINUED

Swivel

THREAD	FLARE	TUBE SIZE	OAL	FITS
M10 x 1	DN	3/16"	57mm	US

A = Asian

EU = European

US = United States

UNI = Universal

V = Various

Male Swivel - 7/16" x 24NS

Male Swivel - 1/2" and 9/16" NF

Male Swivel - Metric

MISCELLANEOUS HOSE FITTINGS

HF53



Swivel

THREAD	FLARE	TUBE SIZE	OAL	FITS
M10 x 1	DIN	3/16"	57mm	US

HF77



Swivel

THREAD	FLARE	TUBE SIZE	OAL	FITS
M12 x 1	DIN	1/4"	57mm	V

HF82



Swivel

THREAD	FLARE	TUBE SIZE	OAL	FITS
M10 x 1	DIN	3/16"	71mm	V

HF99



Swivel 95°

THREAD	FLARE	TUBE SIZE	OAL	FITS
M10 x 1	DIN	3/16"	-	US

HF115



Swivel 90°

THREAD	FLARE	TUBE SIZE	OAL	FITS
M10 x 1	DIN	3/16"	-	EU

HF116



Swivel

THREAD	FLARE	TUBE SIZE	OAL	FITS
M10 x 1	DIN	3/16"	-	EU

HF117



Swivel

THREAD	FLARE	TUBE SIZE	OAL	FITS
M10 x 1	DIN	3/16"	-	EU

HF310

NEW



Swivel

THREAD	FLARE	TUBE SIZE	OAL	FITS
M10 x 1	DIN	3/16"	72mm	EU

HF311

NEW



Swivel

THREAD	FLARE	TUBE SIZE	OAL	FITS
M10 x 1	DIN	3/16"	60mm	EU

HF403

NEW



Swivel

THREAD	FLARE	TUBE SIZE	OAL	FITS
M10 x 1	Double	3/16"	65mm	V

HF404

NEW



Swivel

THREAD	FLARE	TUBE SIZE	OAL	FITS
M12 x 1	Double	3/16"	65mm	V

DID YOU KNOW?

Some flared tube style fittings are deliberately made longer to make them more universal. This enables you to bend the tube to the desired shape and allows you plenty of room to place the BQ23 test spade under the nut for testing.

MISCELLANEOUS HOSE FITTINGS

HF09



Swivel
No. 3 JIC

THREAD	FLARE	TUBE SIZE	OAL	FITS
3/8" x 24NF	37° Double	3/16"	58mm	V

HF09W



Swivel
No. 3 JIC

THREAD	FLARE	TUBE SIZE	OAL	FITS
3/8" x 24NF	37°	-	36mm	V

HF10



Swivel 45°
No. 3 JIC

THREAD	FLARE	TUBE SIZE	OAL	FITS
3/8" x 24NF	37° Double	3/16"	52mm	V

HF11



Swivel 90°
No. 4 JIC

THREAD	FLARE	TUBE SIZE	OAL	FITS
3/8" x 24NF	37° Double	3/16"	45mm	V

HF12



Swivel
No. 4 JIC

THREAD	FLARE	TUBE SIZE	OAL	FITS
7/16" x 20NF	37° Double	1/4"	50mm	V

HF13



Swivel 45°
No. 4 JIC

THREAD	FLARE	TUBE SIZE	OAL	FITS
7/16" x 20NF	37° Double	1/4"	56mm	V

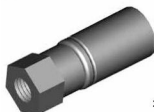
HF14



Swivel 90°
No. 4 JIC

THREAD	FLARE	TUBE SIZE	OAL	FITS
7/16" x 20NF	37° Double	1/4"	48mm	V

HF61



Swivel
No. 2 JIC

THREAD	FLARE	TUBE SIZE	OAL	FITS
5/16 NF	37° Double	-	35mm	V

HF102



Swivel

THREAD	FLARE	TUBE SIZE	OAL	FITS
M12 x L	Double	1/4"	50mm	V

HF110



Swivel
O-Ring Included

THREAD	FLARE	TUBE SIZE	OAL	FITS
M14 x L3	24°	-	49mm	V

HF111



Swivel
O-Ring Included

THREAD	FLARE	TUBE SIZE	OAL	FITS
1/4" x 19NSF	Flat Face	1/4"	-	V

Female Swivel

Specials

MISCELLANEOUS HOSE FITTINGS

Center Joiner

HF37



THREAD	FLARE	TUBE SIZE	OAL	FITS
-	-	8mm	86mm	A

HF38



THREAD	FLARE	TUBE SIZE	OAL	FITS
-	-	8mm	86mm	A

HF71



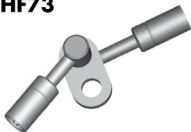
THREAD	FLARE	TUBE SIZE	OAL	FITS
-	-	7mm	130mm	A

HF72



THREAD	FLARE	TUBE SIZE	OAL	FITS
-	-	7mm	130mm	A

HF73



THREAD	FLARE	TUBE SIZE	OAL	FITS
-	-	7mm	95mm	A

HF74



THREAD	FLARE	TUBE SIZE	OAL	FITS
-	-	7mm	95mm	A

HF300



THREAD	FLARE	TUBE SIZE	OAL	FITS
-	-	8mm	190mm	US

HF301



THREAD	FLARE	TUBE SIZE	OAL	FITS
-	-	8mm	190mm	US

MISCELLANEOUS HOSE FITTINGS

HF35



THREAD	FLARE	TUBE SIZE	OAL	FITS
-	-	-	43mm	US

HF62



THREAD	FLARE	TUBE SIZE	OAL	FITS
-	-	-	35mm	US

HF83



Suits Jeep O-Ring Included

THREAD	FLARE	TUBE SIZE	OAL	FITS
-	-	-	35mm	US

HF114



O-Ring Included

THREAD	FLARE	TUBE SIZE	OAL	FITS
-	-	-	44mm	EU

HF125



O-Ring Included

THREAD	FLARE	TUBE SIZE	OAL	FITS
-	-	-	50mm	US

HF30



For 3/16" Tube

THREAD	FLARE	TUBE SIZE	OAL	FITS
-	-	3/16"	48mm	UNI

HF31



For 1/4" Tube

THREAD	FLARE	TUBE SIZE	OAL	FITS
-	-	1/4"	51mm	UNI

Note: Compression Style fittings are not recommended for hydraulic braking systems.

Clutch Special

Compression

MISCELLANEOUS HOSE FITTINGS

Lifesaver

HF01



THREAD	FLARE	TUBE SIZE	OAL	FITS
-	-	3/16"	27mm	UNI

HF05



Center Support Lifesaver

THREAD	FLARE	TUBE SIZE	OAL	FITS
-	-	-	25mm	UNI

HF26



THREAD	FLARE	TUBE SIZE	OAL	FITS
-	-	1/4"	27mm	UNI

HF27



For tube style fittings

THREAD	FLARE	TUBE SIZE	OAL	FITS
-	-	5/16"	27mm	UNI

HF120



For banjo fittings with a 7mm shank

THREAD	FLARE	TUBE SIZE	OAL	FITS
-	-	7mm	25mm	UNI

Universal

HF02



THREAD	FLARE	TUBE SIZE	OAL	FITS
-	-	3/16"	100mm	UNI

HF03



THREAD	FLARE	TUBE SIZE	OAL	FITS
-	-	1/4"	100mm	UNI

HF139

NEW



THREAD	FLARE	TUBE SIZE	OAL	FITS
-	-	1/4"	200mm	UNI

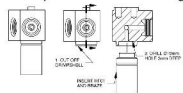
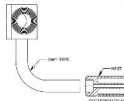
DID YOU KNOW?

It is impossible to stock every fitting. That is why BrakeQuip supplies lifesavers to fill in the gaps. Currently BrakeQuip offers five different lifesavers to suit different fitting situations.

This makes it easy and efficient for you to reuse the original fitting. The HF01 & HF26 are virtually the same and are designed for most standard fittings. However these have a tubing

countersunk in them so that you can easily braze tube directly to them to make up custom fittings. The HF27 is

designed to suit all the fittings that have a 5/16" (8mm) tube attached to it. The HF120 is designed to reuse all banjo fittings that have 7mm shank such as the HFB09. The HF05 is designed to reuse all center support fittings.



BANJO FITTINGS

HFB01



HOLE	THICK	WIDTH	ANGLE	OAL	FITS
10mm	8mm	17mm	-	54mm	V

HFB02



HOLE	THICK	WIDTH	ANGLE	OAL	FITS
10mm	10mm	18mm	-	64mm	A

HFB03



HOLE	THICK	WIDTH	ANGLE	OAL	FITS
10mm	8mm	17mm	-	66mm	A

HFB05



HOLE	THICK	WIDTH	ANGLE	OAL	FITS
10mm	10mm	17mm	-	65mm	A

HFB09



HOLE	THICK	WIDTH	ANGLE	OAL	FITS
10mm	10mm	18mm	-	55mm	V

HFB15



HOLE	THICK	WIDTH	ANGLE	OAL	FITS
10mm	10mm	25mm	-	52mm	A

HFB19



HOLE	THICK	WIDTH	ANGLE	OAL	FITS
15mm	13.5mm	25mm	-	45mm	US

HFB27



HOLE	THICK	WIDTH	ANGLE	OAL	FITS
8mm	6mm	14mm	-	53mm	V

HFB28



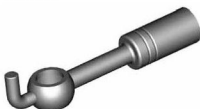
HOLE	THICK	WIDTH	ANGLE	OAL	FITS
10mm	10mm	22mm	-	54mm	A

HFB34



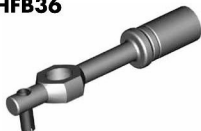
HOLE	THICK	WIDTH	ANGLE	OAL	FITS
10mm	8mm	17mm	-	62.5mm	UX1

HFB35



HOLE	THICK	WIDTH	ANGLE	OAL	FITS
10mm	10mm	17mm	-	80mm	UNI

HFB36



HOLE	THICK	WIDTH	ANGLE	OAL	FITS
10mm	8mm	17mm	-	84mm	UX1

HFB37



HOLE	THICK	WIDTH	ANGLE	OAL	FITS
10mm	10mm	18mm	-	64mm	UX1

HFB47



HOLE	THICK	WIDTH	ANGLE	OAL	FITS
12mm	10mm	19mm	-	55mm	UNI

HFB50



HOLE	THICK	WIDTH	ANGLE	OAL	FITS
10mm	10mm	28mm	-	50mm	US

Round Style - Straight

Right

A = Asian

EU = European

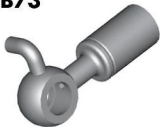
US = United States

UNI = Universal

V = Various

BANJO FITTINGS

HFB73



Left

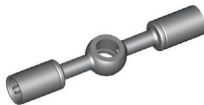
HOLE	THICK	WIDTH	ANGLE	OAL	FITS
10mm	10mm	28mm	-	38mm	US

HFB111



HOLE	THICK	WIDTH	ANGLE	OAL	FITS
8mm	13mm	21mm	-	40mm	US

HFB194



HOLE	THICK	WIDTH	ANGLE	OAL	FITS
10mm	10mm	18mm	-	92mm	V

HFB288



HOLE	THICK	WIDTH	ANGLE	OAL	FITS
10mm	8mm	17mm	-	61mm	A

HFB289



TO BE DISCONTINUED

HOLE	THICK	WIDTH	ANGLE	OAL	FITS
10mm	10mm	-	-	-	V

HFB344



HOLE	THICK	WIDTH	ANGLE	OAL	FITS
10mm	10mm	-	-	58mm	A

HFB350



HOLE	THICK	WIDTH	ANGLE	OAL	FITS
10mm	10mm	-	-	65mm	A

HFB351



HOLE	THICK	WIDTH	ANGLE	OAL	FITS
10mm	10mm	-	-	55mm	A

Left

HFB352



HOLE	THICK	WIDTH	ANGLE	OAL	FITS
10mm	10mm	-	-	55mm	A

Right

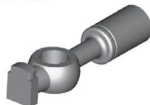
HFB365



TO BE DISCONTINUED

HOLE	THICK	WIDTH	ANGLE	OAL	FITS
10mm	8mm	17mm	-	67mm	A

HFB375



HOLE	THICK	WIDTH	ANGLE	OAL	FITS
10mm	10mm	18mm	-	67mm	EU

HFB448



HOLE	THICK	WIDTH	ANGLE	OAL	FITS
7/16"	10mm	19mm	-	60mm	V

HFB521

(NEW)



HOLE	THICK	WIDTH	ANGLE	OAL	FITS
10mm	8mm	18mm	-	66mm	A

HFB522

(NEW)



HOLE	THICK	WIDTH	ANGLE	OAL	FITS
10mm	8mm	18mm	-	66mm	A

HFB523

(NEW)



HOLE	THICK	WIDTH	ANGLE	OAL	FITS
10mm	10mm	18mm	-	68mm	A

Round Style - Straight

A = Asian

EU = European

US = United States

UNI = Universal

V = Various

BANJO FITTINGS

HFB524

NEW



HOLE	THICK	WIDTH	ANGLE	OAL	FITS
10mm	10mm	18mm	-	60mm	A

HFB527

NEW



HOLE	THICK	WIDTH	ANGLE	OAL	FITS
10mm	10mm	18mm	-	60mm	A

HFB529

NEW



HOLE	THICK	WIDTH	ANGLE	OAL	FITS
10mm	10mm	18mm	-	65mm	A

HFB533

NEW



HOLE	THICK	WIDTH	ANGLE	OAL	FITS
10mm	14mm	20mm	-	50mm	A

HFB10

TO BE DISCONTINUED



Harley

HOLE	THICK	WIDTH	ANGLE	OAL	FITS
10mm	9.5mm	19.05mm	70°	-	US

HFB24



Right = HFB164

Left

HOLE	THICK	WIDTH	ANGLE	OAL	FITS
10mm	8mm	17mm	75°	64mm	A

HFB29



HOLE	THICK	WIDTH	ANGLE	OAL	FITS
10mm	10mm	28mm	40°	52mm	US

HFB30



Left = HFB75

Right

HOLE	THICK	WIDTH	ANGLE	OAL	FITS
10mm	10mm	17mm	90°	52mm	A

HFB31



HOLE	THICK	WIDTH	ANGLE	OAL	FITS
10mm	10mm	17mm	25°	68mm	A

HFB32



HOLE	THICK	WIDTH	ANGLE	OAL	FITS
10mm	8mm	17mm	90°	39mm	V

HFB33



HOLE	THICK	WIDTH	ANGLE	OAL	FITS
10mm	8mm	17mm	75°	60mm	A

HFB75



Right = HFB30

Left

HOLE	THICK	WIDTH	ANGLE	OAL	FITS
10mm	10mm	17mm	90°	61mm	A

HFB92



HOLE	THICK	WIDTH	ANGLE	OAL	FITS
10mm	10mm	18mm	55°	40mm	A

Round Style - Straight

Round Style - Bent

A = Asian

EU = European

US = United States

UNI = Universal

V = Various

BANJO FITTINGS

HFB93



Right

HOLE	THICK	WIDTH	ANGLE	OAL	FITS
10mm	10mm	18mm	35°	90mm	A

HFB105



Left

HOLE	THICK	WIDTH	ANGLE	OAL	FITS
3/8"	1/2"	21mm	25°	113mm	US

HFB106



Right

HOLE	THICK	WIDTH	ANGLE	OAL	FITS
3/8"	1/2"	21mm	25°	113mm	US

HFB150



TO BE DISCONTINUED

Harley

HOLE	THICK	WIDTH	ANGLE	OAL	FITS
7/16"	8.5mm	19mm	-	192mm	US

HFB157



TO BE DISCONTINUED

HOLE	THICK	WIDTH	ANGLE	OAL	FITS
10mm	10mm	18mm	70°	102mm	A

HFB158



Left

HOLE	THICK	WIDTH	ANGLE	OAL	FITS
7/16"	15mm	35mm	35°	57mm	US

HFB159



Right

HOLE	THICK	WIDTH	ANGLE	OAL	FITS
7/16"	15mm	35mm	35°	57mm	US

HFB164



Left = HFB24

Right

HOLE	THICK	WIDTH	ANGLE	OAL	FITS
10mm	8mm	17mm	75°	64mm	A

HFB340



HOLE	THICK	WIDTH	ANGLE	OAL	FITS
10mm	10mm	18mm	45°	100mm	A

HFB341



HOLE	THICK	WIDTH	ANGLE	OAL	FITS
10mm	10mm	18mm	75°	55mm	A

HFB342



Right

HOLE	THICK	WIDTH	ANGLE	OAL	FITS
10mm	8mm	17mm	15°	60mm	A

HFB343



Left

HOLE	THICK	WIDTH	ANGLE	OAL	FITS
10mm	8mm	17mm	15°	60mm	A

HFB345



Left

HOLE	THICK	WIDTH	ANGLE	OAL	FITS
10mm	10mm	18mm	90°	45mm	A

HFB346



Right

HOLE	THICK	WIDTH	ANGLE	OAL	FITS
10mm	10mm	18mm	30°	45mm	A

HFB348



Left

HOLE	THICK	WIDTH	ANGLE	OAL	FITS
10mm	15mm	16mm	30°	58mm	A

Round Style - Bent

A = Asian

EU = European

US = United States

UNI = Universal

V = Various

BANJO FITTINGS

HFB349



Right

HOLE	THICK	WIDTH	ANGLE	OAL	FITS
10mm	15mm	18mm	30°	50mm	A

HFB353



Right

HOLE	THICK	WIDTH	ANGLE	OAL	FITS
10mm	8mm	18mm	75°	60mm	A

HFB354



Left

HOLE	THICK	WIDTH	ANGLE	OAL	FITS
10mm	8mm	18mm	75°	60mm	A

HFB356



Left

HOLE	THICK	WIDTH	ANGLE	OAL	FITS
10mm	8mm	18mm	40°	60mm	A

HFB357



Right

HOLE	THICK	WIDTH	ANGLE	OAL	FITS
10mm	8mm	18mm	40°	60mm	A

HFB358



Left

HOLE	THICK	WIDTH	ANGLE	OAL	FITS
10mm	8mm	17mm	75°	45mm	A

HFB359



Right

HOLE	THICK	WIDTH	ANGLE	OAL	FITS
10mm	8mm	17mm	75°	45mm	A

HFB360



Right

HOLE	THICK	WIDTH	ANGLE	OAL	FITS
10mm	8mm	18mm	55°	65mm	A

HFB361



Left

HOLE	THICK	WIDTH	ANGLE	OAL	FITS
10mm	8mm	18mm	55°	65mm	A

HFB362



Left

HOLE	THICK	WIDTH	ANGLE	OAL	FITS
10mm	8mm	18mm	90°	45mm	A

HFB363



Right

HOLE	THICK	WIDTH	ANGLE	OAL	FITS
10mm	8mm	18mm	90°	45mm	A

HFB364



HOLE	THICK	WIDTH	ANGLE	OAL	FITS
10mm	8mm	18mm	75°	50mm	A

HFB366



HOLE	THICK	WIDTH	ANGLE	OAL	FITS
10mm	8mm	17mm	30°	-	A

HFB372



HOLE	THICK	WIDTH	ANGLE	OAL	FITS
10mm	10mm	18mm	60°	45mm	A

HFB373



HOLE	THICK	WIDTH	ANGLE	OAL	FITS
10mm	10mm	18mm	55°	65mm	A

Round Style - Bent

A = Asian

EU = European

US = United States

UNI = Universal

V = Various

BANJO FITTINGS

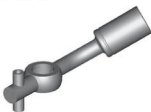
HFB389



Right

HOLE	THICK	WIDTH	ANGLE	OAL	FITS
10mm	8mm	17mm	45°	75mm	A

HFB390



Left

HOLE	THICK	WIDTH	ANGLE	OAL	FITS
10mm	8mm	17mm	45°	75mm	A

HFB456



Right

HOLE	THICK	WIDTH	ANGLE	OAL	FITS
10mm	10mm	18mm	90°	48mm	A

HFB457



Left

HOLE	THICK	WIDTH	ANGLE	OAL	FITS
10mm	10mm	18mm	90°	48mm	A

HFB518

NEW



HOLE	THICK	WIDTH	ANGLE	OAL	FITS
10mm	10mm	17mm	45°	84mm	A

HFB519

NEW



HOLE	THICK	WIDTH	ANGLE	OAL	FITS
10mm	10mm	18mm	15°	60mm	A

HFB520

NEW



HOLE	THICK	WIDTH	ANGLE	OAL	FITS
10mm	10mm	17mm	15°	67mm	A

HFB530

NEW



HOLE	THICK	WIDTH	ANGLE	OAL	FITS
10mm	10mm	17mm	15°	82mm	A

HFB531

NEW



HOLE	THICK	WIDTH	ANGLE	OAL	FITS
10mm	8mm	18mm	90°	45mm	A

HFB532

NEW



HOLE	THICK	WIDTH	ANGLE	OAL	FITS
10mm	8mm	18mm	90°	45mm	A

HFB534

NEW



HOLE	THICK	WIDTH	ANGLE	OAL	FITS
10mm	10mm	18mm	75°	66mm	A

HFB535

NEW



HOLE	THICK	WIDTH	ANGLE	OAL	FITS
10mm	10mm	18mm	30°	68mm	A

HFB536

NEW



HOLE	THICK	WIDTH	ANGLE	OAL	FITS
10mm	10mm	18mm	30°	68mm	A

HFB537

NEW



HOLE	THICK	WIDTH	ANGLE	OAL	FITS
10mm	10mm	18mm	45°	66mm	A

HFB538

NEW



HOLE	THICK	WIDTH	ANGLE	OAL	FITS
10mm	10mm	18mm	45°	68mm	A

Round Style - Bent

A = Asian

EU = European

US = United States

UNI = Universal

V = Various

BANJO FITTINGS

HFB539

NEW



HOLE	THICK	WIDTH	ANGLE	OAL	FITS
10mm	10mm	18mm	40°	40mm	A

HFB540

NEW

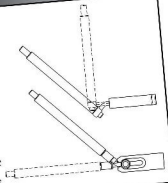


HOLE	THICK	WIDTH	ANGLE	OAL	FITS
10mm	10mm	18mm	40°	40mm	A

Round Style - Bent

DID YOU KNOW?

Hymatec makes the round style banjo fittings that only have one bend in a straight form to allow you to easily bend the banjo shank to the desired shape. You can usually bend these banjo fittings up to 90° by using the available banjo bending tools.



CAUTION

Illustrations shown in this reference guide may vary slightly in detail from actual parts due to manufacturer's tolerances and design differences. Note: Illustrations not to scale.

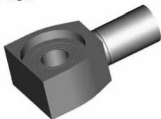
DISCLAIMER NOTICE

The illustrations and data contained in this illustrated reference guide are intended as an aid in identifying the various products and have been obtained and developed from the specifications and information available. Although BredaCorp believes that such illustrations and data are correct, errors may exist and further verification on the part of the user may be necessary.

BANJO FITTINGS

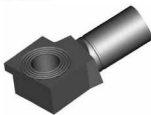
Block Style - 3/8" Hole

HFB67



HOLE	THICK	WIDTH	ANGLE	OAL	FITS
3/8"	1/2"	28mm	-	68mm	US

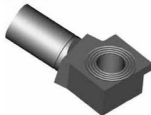
HFB230



Right

HOLE	THICK	WIDTH	ANGLE	OAL	FITS
3/8"	7/16"	22mm	10°	45mm	US

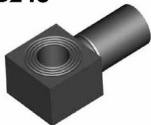
HFB231



Left

HOLE	THICK	WIDTH	ANGLE	OAL	FITS
3/8"	7/16"	22mm	10°	45mm	US

HFB243



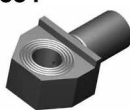
HOLE	THICK	WIDTH	ANGLE	OAL	FITS
3/8"	14.9mm	20.3mm	-	42mm	US

HFB283



HOLE	THICK	WIDTH	ANGLE	OAL	FITS
3/8"	14.7mm	20mm	-	42mm	US

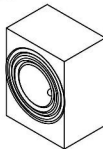
HFB384



HOLE	THICK	WIDTH	ANGLE	OAL	FITS
3/8"	1/2"	25.4mm	-	45mm	US

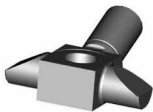
DID YOU KNOW?

The gramophone finish on some banjo fittings are designed to increase the sealing power of the copper washer. It is usually on banjo fittings that have a large flat face.



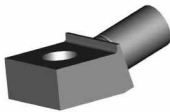
BANJO FITTINGS

HFB41



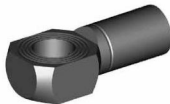
HOLE	THICK	WIDTH	ANGLE	OAL	FITS
7/16"	14mm	48mm	20°	50mm	US

HFB48



HOLE	THICK	WIDTH	ANGLE	OAL	FITS
7/16"	1/2"	25.5mm	15°	49mm	US

HFB54



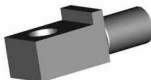
HOLE	THICK	WIDTH	ANGLE	OAL	FITS
7/16"	11mm	19mm	-	43mm	US

HFB55



HOLE	THICK	WIDTH	ANGLE	OAL	FITS
7/16"	1/2"	25mm	-	47mm	US

HFB59



HOLE	THICK	WIDTH	ANGLE	OAL	FITS
7/16"	14.8mm	19.5mm	-	32mm	US

HFB60



HOLE	THICK	WIDTH	ANGLE	OAL	FITS
7/16"	11.5mm	20mm	10°	46mm	V

HFB66



HOLE	THICK	WIDTH	ANGLE	OAL	FITS
7/16"	14.7mm	19mm	-	41mm	US

HFB72



HOLE	THICK	WIDTH	ANGLE	OAL	FITS
7/16"	11mm	19mm	10°	42mm	US

HFB84



HOLE	THICK	WIDTH	ANGLE	OAL	FITS
7/16"	11mm	19.8mm	25°	50mm	US

Block Style - 7/16" Hole

DID YOU KNOW?

Copper washers or brake fluid compatible bonded washers should only be used for sealing the high pressures found in braking systems. Aluminum and nylon washers are for low pressure only and should not be used on braking systems.

BANJO FITTINGS

Block - 8mm Hole

HFB112



HOLE	THICK	WIDTH	ANGLE	OAL	FITS
8mm	14mm	17mm	35°	38mm	US

HFB07



Left

HOLE	THICK	WIDTH	ANGLE	OAL	FITS
10mm	16mm	22mm	27°	39mm	A

HFB08



Right

HOLE	THICK	WIDTH	ANGLE	OAL	FITS
10mm	16mm	22mm	27°	59mm	A

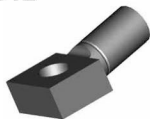
HFB11



HOLE	THICK	WIDTH	ANGLE	OAL	FITS
10mm	16mm	28mm	40°	92mm	A

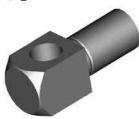
Block Style - 10mm Hole

HFB12



HOLE	THICK	WIDTH	ANGLE	OAL	FITS
10mm	11.5mm	20mm	10°	46mm	V

HFB13



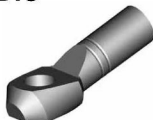
HOLE	THICK	WIDTH	ANGLE	OAL	FITS
10mm	16mm	16mm	-	42mm	V

HFB14



HOLE	THICK	WIDTH	ANGLE	OAL	FITS
10mm	13mm	20mm	20°	55mm	US

HFB16



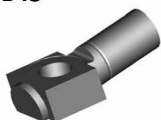
HOLE	THICK	WIDTH	ANGLE	OAL	FITS
10mm	10.4mm	19mm	20°	34mm	EU

HFB40



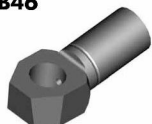
HOLE	THICK	WIDTH	ANGLE	OAL	FITS
10mm	11.3mm	19mm	-	42mm	US

HFB45



HOLE	THICK	WIDTH	ANGLE	OAL	FITS
10mm	11mm	19.6mm	10°	47mm	US

HFB46



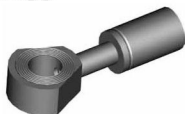
HOLE	THICK	WIDTH	ANGLE	OAL	FITS
10mm	11mm	17.6mm	10°	44mm	US

HFB49



HOLE	THICK	WIDTH	ANGLE	OAL	FITS
10mm	11.3mm	19mm	-	44mm	US

HFB53



HOLE	THICK	WIDTH	ANGLE	OAL	FITS
10mm	10mm	22mm	-	57mm	US

A = Asian

EU = European

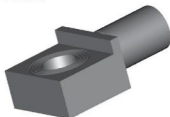
US = United States

UNI = Universal

V = Various

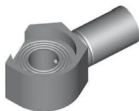
BANJO FITTINGS

HFB56



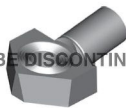
HOLE	THICK	WIDTH	ANGLE	OAL	FITS
10mm	11.7mm	26mm	-	45mm	US

HFB57



HOLE	THICK	WIDTH	ANGLE	OAL	FITS
10mm	11.6mm	33mm	-	49mm	US

HFB62



TO BE DISCONTINUED

HOLE	THICK	WIDTH	ANGLE	OAL	FITS
10mm	11mm	28mm	30°	44mm	US

HFB81



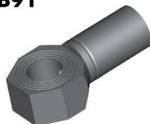
HOLE	THICK	WIDTH	ANGLE	OAL	FITS
10mm	23mm	16mm	50°	46mm	A

HFB85



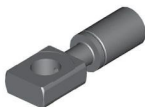
HOLE	THICK	WIDTH	ANGLE	OAL	FITS
10mm	14.7mm	48mm	20°	90mm	US

HFB91



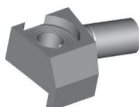
HOLE	THICK	WIDTH	ANGLE	OAL	FITS
10mm	11.4mm	20mm	-	42mm	US

HFB100



HOLE	THICK	WIDTH	ANGLE	OAL	FITS
10mm	8mm	17mm	-	51mm	EU

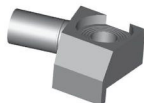
HFB133



Right

HOLE	THICK	WIDTH	ANGLE	OAL	FITS
10mm	11mm	28mm	-	90mm	US

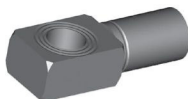
HFB134



Left

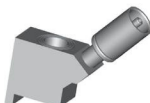
HOLE	THICK	WIDTH	ANGLE	OAL	FITS
10mm	11mm	28mm	-	90mm	US

HFB144



HOLE	THICK	WIDTH	ANGLE	OAL	FITS
10mm	11.5mm	17mm	-	46mm	V

HFB149



HOLE	THICK	WIDTH	ANGLE	OAL	FITS
10mm	24mm	16mm	50°	35mm	A

HFB187



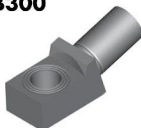
HOLE	THICK	WIDTH	ANGLE	OAL	FITS
10mm	8mm	19mm	-	61mm	EU

HFB286



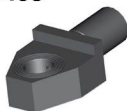
HOLE	THICK	WIDTH	ANGLE	OAL	FITS
10mm	11.5	22.4mm	-	62mm	US

HFB300



HOLE	THICK	WIDTH	ANGLE	OAL	FITS
10mm	11.4mm	17mm	15°	50mm	A

HFB403



HOLE	THICK	WIDTH	ANGLE	OAL	FITS
10mm	11.5	26mm	-	52mm	US

Block Style - 10mm Hole

A = Asian

EU = European

US = United States

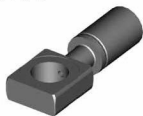
UNI = Universal

V = Various

BANJO FITTINGS

Block Style - 12mm & 16mm Hole

HFB101



HOLE	THICK	WIDTH	ANGLE	OAL	FITS
12mm	8mm	19mm	-	51mm	EU

HFB145



HOLE	THICK	WIDTH	ANGLE	OAL	FITS
12mm	8mm	19mm	-	61mm	EU

HFB146



HOLE	THICK	WIDTH	ANGLE	OAL	FITS
12mm	11.5mm	20mm	10°	50mm	EU

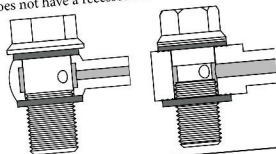
HFB38



HOLE	THICK	WIDTH	ANGLE	OAL	FITS
16mm	14mm	22.2mm	-	44mm	US

DID YOU KNOW?

It is important to match a banjo bolt to the correct banjo fitting. If the banjo fitting hole is "scalloped" out then it doesn't matter if the banjo bolt has a groove at the inlet port. The fluid flow can be restricted if you use a banjo bolt that does not have a relief at the outlet port into a banjo fitting that does not have a recessed hole.



CAUTION

Illustrations shown in this reference guide may vary slightly in detail from actual parts due to manufacturer's tolerances and design differences. Note: Illustrations not to scale.

DISCLAIMER NOTICE

The illustrations and data contained in this illustrated reference guide are intended as an aid in identifying the various products and have been obtained and developed from the specifications and information available. Although BrakeQuip believes that such illustrations and data are correct, errors may exist and further verification on the part of the user may be necessary.

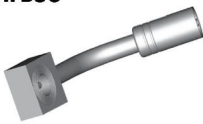
BANJO FITTINGS

HFB39



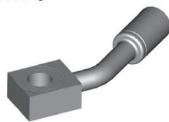
HOLE	THICK	WIDTH	ANGLE	OAL	FITS
3/8"	1/2"	19.2mm	15°	104mm	US

HFB58



HOLE	THICK	WIDTH	ANGLE	OAL	FITS
3/8"	7/16"	22.2mm	65°	80mm	US

HFB90



HOLE	THICK	WIDTH	ANGLE	OAL	FITS
3/8"	7/16"	19mm	35°	75mm	US

HFB98

TO BE DISCONTINUED



HOLE	THICK	WIDTH	ANGLE	OAL	FITS
3/8"	1/2"	25mm	25°	120mm	US

HFB148



HOLE	THICK	WIDTH	ANGLE	OAL	FITS
3/8"	1/2"	25mm	85°	131mm	US

HFB182



HOLE	THICK	WIDTH	ANGLE	OAL	FITS
3/8"	1/2"	22.2mm	-	163mm	US

HFB188



HOLE	THICK	WIDTH	ANGLE	OAL	FITS
3/8"	12.3mm	40mm	90°	116mm	US

HFB193



HOLE	THICK	WIDTH	ANGLE	OAL	FITS
3/8"	1/2"	23mm	10°	110mm	US

HFB203



HOLE	THICK	WIDTH	ANGLE	OAL	FITS
3/8"	11mm	25mm	35°	75mm	US

HFB211



HOLE	THICK	WIDTH	ANGLE	OAL	FITS
3/8"	1/2"	22mm	-	125mm	US

HFB273



HOLE	THICK	WIDTH	ANGLE	OAL	FITS
3/8"	1/2"	28.5mm	90°	-	US

HFB61



HOLE	THICK	WIDTH	ANGLE	OAL	FITS
7/16"	14.6mm	22.2mm	105°	40mm	US

HFB80



HOLE	THICK	WIDTH	ANGLE	OAL	FITS
7/16"	15mm	20mm	30°	110mm	US

HFB276



HOLE	THICK	WIDTH	ANGLE	OAL	FITS
7/16"	14.7mm	22.2mm	90°	45mm	US

Tube Style (Either Side) - 3/8" Hole

7/16" Hole

A = Asian

EU = European

US = United States

UNI = Universal

V = Various

BANJO FITTINGS

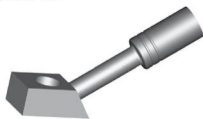
7/16" Hole

HFB299



HOLE	THICK	WIDTH	ANGLE	OAL	FITS
7/16"	12mm	24.3mm	15°	150mm	US

HFB17



HOLE	THICK	WIDTH	ANGLE	OAL	FITS
10mm	11.5mm	17mm	35°	78mm	V

HFB18



TO BE DISCONTINUED

HOLE	THICK	WIDTH	ANGLE	OAL	FITS
10mm	13mm	18mm	50°	78mm	A

HFB21



HOLE	THICK	WIDTH	ANGLE	OAL	FITS
10mm	11.5mm	17mm	50°	72mm	V

Tube Style (Either Side) - 10mm Hole

HFB51



HOLE	THICK	WIDTH	ANGLE	OAL	FITS
10mm	11mm	22.2mm	55°	75mm	US

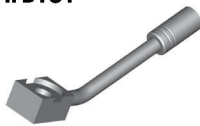
HFB160



TO BE DISCONTINUED

HOLE	THICK	WIDTH	ANGLE	OAL	FITS
10mm	11mm	20mm	25°	127mm	US

HFB161



HOLE	THICK	WIDTH	ANGLE	OAL	FITS
10mm	11.5mm	20mm	30°	121mm	US

HFB173



HOLE	THICK	WIDTH	ANGLE	OAL	FITS
10mm	12mm	22.2mm	50°	118mm	US

HFB180



HOLE	THICK	WIDTH	ANGLE	OAL	FITS
10mm	13mm	19.5mm	30°	65mm	US

HFB236

NEW



HOLE	THICK	WIDTH	ANGLE	OAL	FITS
10mm	11/2"	18mm	90°	71mm	US

HFB251



HOLE	THICK	WIDTH	ANGLE	OAL	FITS
10mm	12.6mm	19.6mm	90°	86mm	US

HFB256



HOLE	THICK	WIDTH	ANGLE	OAL	FITS
10mm	11.7mm	19.5mm	75°	110mm	US

HFB267



HOLE	THICK	WIDTH	ANGLE	OAL	FITS
10mm	11.7mm	20.5mm	15°	90mm	US

A = Asian

EU = European

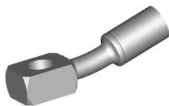
US = United States

UNI = Universal

V = Various

BANJO FITTINGS

HFB309



HOLE	THICK	WIDTH	ANGLE	OAL	FITS
10mm	11.5mm	17mm	15°	62mm	V

HFB310



HOLE	THICK	WIDTH	ANGLE	OAL	FITS
10mm	11.5mm	19mm	10°	82mm	V

HFB378



HOLE	THICK	WIDTH	ANGLE	OAL	FITS
10mm	11.6mm	17mm	45°	-	US

HFB397



HOLE	THICK	WIDTH	ANGLE	OAL	FITS
10mm	18mm	8.5mm	60°	78mm	V

HFB405



HOLE	THICK	WIDTH	ANGLE	OAL	FITS
10mm	11.7mm	19.3mm	40°	57mm	US

HFB379



HOLE	THICK	WIDTH	ANGLE	OAL	FITS
12mm	8.5mm	19mm	30°	60mm	EU

HFB22



HOLE	THICK	WIDTH	ANGLE	OAL	FITS
10mm	11.5mm	19mm	-	122mm	UNI

HFB23



HOLE	THICK	WIDTH	ANGLE	OAL	FITS
7/16"	1/2"	19mm	-	122mm	UNI

Tube Style (Either Side) – 10mm Hole

12mm Hole

Universal

DID YOU KNOW?

Some banjo fittings have the banjo hole offset from the center as a locator on the caliper. By reducing the offset amount from the opposite side also allows the banjo hole to be in the center and able to fit both sides instead of just one side only.



A = Asian

EU = European

US = United States

UNI = Universal

V = Various

BANJO FITTINGS

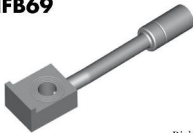
HFB68



Left

HOLE	THICK	WIDTH	ANGLE	OAL	FITS
3/8"	1/2"	22.6mm	7°	130mm	US

HFB69



Right

HOLE	THICK	WIDTH	ANGLE	OAL	FITS
3/8"	1/2"	22.6mm	7°	130mm	US

HFB76



TO BE DISCONTINUED

Left

HOLE	THICK	WIDTH	ANGLE	OAL	FITS
3/8"	1/2"	19.7mm	90°	143mm	US

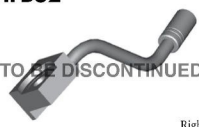
HFB77



Right

HOLE	THICK	WIDTH	ANGLE	OAL	FITS
3/8"	1/2"	19.7mm	90°	143mm	US

HFB82



TO BE DISCONTINUED

Right

HOLE	THICK	WIDTH	ANGLE	OAL	FITS
3/8"	1/2"	26mm	90°	147mm	US

HFB83



Left

HOLE	THICK	WIDTH	ANGLE	OAL	FITS
3/8"	1/2"	26mm	90°	147mm	US

HFB102



TO BE DISCONTINUED

Right

HOLE	THICK	WIDTH	ANGLE	OAL	FITS
3/8"	1/2"	23mm	23°	140mm	US

HFB103



TO BE DISCONTINUED

Left

HOLE	THICK	WIDTH	ANGLE	OAL	FITS
3/8"	1/2"	23mm	23°	140mm	US

HFB115



Right

HOLE	THICK	WIDTH	ANGLE	OAL	FITS
3/8"	1/2"	22.2mm	55°	112mm	US

HFB116



Left

HOLE	THICK	WIDTH	ANGLE	OAL	FITS
3/8"	1/2"	22.2mm	55°	112mm	US

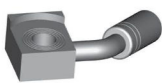
HFB125



Left

HOLE	THICK	WIDTH	ANGLE	OAL	FITS
3/8"	1/2"	25mm	35°	64mm	US

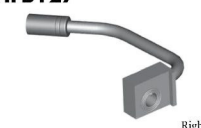
HFB126



Right

HOLE	THICK	WIDTH	ANGLE	OAL	FITS
3/8"	1/2"	25mm	35°	64mm	US

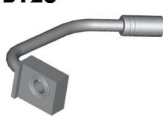
HFB127



Right

HOLE	THICK	WIDTH	ANGLE	OAL	FITS
3/8"	1/2"	25mm	90°	136mm	US

HFB128



Left

HOLE	THICK	WIDTH	ANGLE	OAL	FITS
3/8"	1/2"	25mm	90°	136mm	US

HFB129



Left

HOLE	THICK	WIDTH	ANGLE	OAL	FITS
3/8"	1/2"	25mm	85°	85mm	US

Tube Style (Left/Right) - 3/8" Hole

A = Asian

EU = European

US = United States

UNI = Universal

V = Various

BANJO FITTINGS

HFB130



Right

HOLE	THICK	WIDTH	ANGLE	OAL	FITS
3/8"	1/2"	25mm	85°	185mm	US

HFB131



Right

HOLE	THICK	WIDTH	ANGLE	OAL	FITS
3/8"	1/2"	25mm	30°	148mm	US

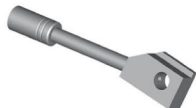
HFB132



Left

HOLE	THICK	WIDTH	ANGLE	OAL	FITS
3/8"	1/2"	25mm	30°	148mm	US

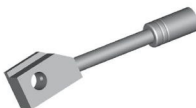
HFB135



Right

HOLE	THICK	WIDTH	ANGLE	OAL	FITS
3/8"	7/16"	22.2mm	10°	114mm	US

HFB136



Left

HOLE	THICK	WIDTH	ANGLE	OAL	FITS
3/8"	7/16"	22.2mm	10°	114mm	US

HFB140



Left

HOLE	THICK	WIDTH	ANGLE	OAL	FITS
3/8"	1/2"	22.2mm	75°	111mm	US

HFB141



Right

HOLE	THICK	WIDTH	ANGLE	OAL	FITS
3/8"	1/2"	22.2mm	75°	111mm	US

HFB155



Right

HOLE	THICK	WIDTH	ANGLE	OAL	FITS
3/8"	1/2"	25mm	70°	190mm	US

HFB156



Left

HOLE	THICK	WIDTH	ANGLE	OAL	FITS
3/8"	1/2"	25mm	70°	190mm	US

HFB174



Right

HOLE	THICK	WIDTH	ANGLE	OAL	FITS
3/8"	1/2"	22.2mm	90°	70mm	US

HFB175



Left

HOLE	THICK	WIDTH	ANGLE	OAL	FITS
3/8"	1/2"	22.2mm	90°	70mm	US

HFB185



Left

HOLE	THICK	WIDTH	ANGLE	OAL	FITS
3/8"	1/2"	25mm	75°	180mm	US

HFB186



TO BE DISCONTINUED

Right

HOLE	THICK	WIDTH	ANGLE	OAL	FITS
3/8"	1/2"	25mm	75°	180mm	US

HFB209



Left

HOLE	THICK	WIDTH	ANGLE	OAL	FITS
3/8"	1/2"	23mm	90°	180mm	US

HFB210



Right

HOLE	THICK	WIDTH	ANGLE	OAL	FITS
3/8"	1/2"	23mm	90°	180mm	US

Tube Style (Left/Right) - 3/8" Hole

A = Asian

EU = European

US = United States

UNI = Universal

V = Various

BANJO FITTINGS

HFB214



TO BE DISCONTINUED

Left

HOLE	THICK	WIDTH	ANGLE	OAL	FITS
3/8"	1/2"	35.6mm	75°	345mm	US

HFB215



TO BE DISCONTINUED

Right

HOLE	THICK	WIDTH	ANGLE	OAL	FITS
3/8"	1/2"	25.4mm	75°	245mm	US

HFB217



Right

HOLE	THICK	WIDTH	ANGLE	OAL	FITS
3/8"	1/2"	25.4mm	90°	210mm	US

HFB218



Left

HOLE	THICK	WIDTH	ANGLE	OAL	FITS
3/8"	1/2"	25.4mm	90°	310mm	US

HFB221



Left

HOLE	THICK	WIDTH	ANGLE	OAL	FITS
3/8"	1/2"	25.5mm	90°	180mm	US

HFB222



Right

HOLE	THICK	WIDTH	ANGLE	OAL	FITS
3/8"	1/2"	25.5mm	90°	180mm	US

HFB270



Right

HOLE	THICK	WIDTH	ANGLE	OAL	FITS
3/8"	1/2"	25.4mm	-	-	US

HFB277



Right

HOLE	THICK	WIDTH	ANGLE	OAL	FITS
3/8"	1/2"	22.2mm	90°	73mm	US

HFB278



Left

HOLE	THICK	WIDTH	ANGLE	OAL	FITS
3/8"	1/2"	22.2mm	90°	73mm	US

HFB306



Right

HOLE	THICK	WIDTH	ANGLE	OAL	FITS
3/8"	1/2"	26mm	70°	134mm	US

HFB307



Left

HOLE	THICK	WIDTH	ANGLE	OAL	FITS
3/8"	1/2"	26mm	70°	134mm	US

HFB315



Left

HOLE	THICK	WIDTH	ANGLE	OAL	FITS
3/8"	1/2"	22.2mm	-	195mm	US

HFB316



Right

HOLE	THICK	WIDTH	ANGLE	OAL	FITS
3/8"	1/2"	22.2mm	65°	195mm	US

HFB317



Left

HOLE	THICK	WIDTH	ANGLE	OAL	FITS
3/8"	1/2"	22.2mm	65°	178mm	US

HFB318



Right

HOLE	THICK	WIDTH	ANGLE	OAL	FITS
3/8"	1/2"	22.2mm	65°	178mm	US

Tube Style (Left/Right) - 3/8" Hole

A = Asian

EU = European

US = United States

UNI = Universal

V = Various

BANJO FITTINGS

HFB321



Right

HOLE	THICK	WIDTH	ANGLE	OAL	FITS
3/8"	1/2"	24.4mm	-	105mm	US

HFB322



Left

HOLE	THICK	WIDTH	ANGLE	OAL	FITS
3/8"	1/2"	24.4mm	-	105mm	US

HFB323



Left

HOLE	THICK	WIDTH	ANGLE	OAL	FITS
3/8"	1/2"	23mm	90°	63mm	US

HFB324



Right

HOLE	THICK	WIDTH	ANGLE	OAL	FITS
3/8"	1/2"	23mm	90°	63mm	US

HFB380



Left

HOLE	THICK	WIDTH	ANGLE	OAL	FITS
3/8"	7/16"	25.4mm	60°	165mm	US

HFB381



Right

HOLE	THICK	WIDTH	ANGLE	OAL	FITS
3/8"	7/16"	25.4mm	60°	165mm	US

HFB386



Left

HOLE	THICK	WIDTH	ANGLE	OAL	FITS
3/8"	1/2"	22.2mm	-	200mm	US

HFB387



Right

HOLE	THICK	WIDTH	ANGLE	OAL	FITS
3/8"	1/2"	22.2mm	-	200mm	US

HFB418



Left

HOLE	THICK	WIDTH	ANGLE	OAL	FITS
3/8"	7/16"	78mm	60°	80mm	US

HFB419



Right

HOLE	THICK	WIDTH	ANGLE	OAL	FITS
3/8"	7/16"	78mm	60°	80mm	US

HFB430



Right

HOLE	THICK	WIDTH	ANGLE	OAL	FITS
3/8"	1/2"	23.3mm	-	-	US

HFB431



Left

HOLE	THICK	WIDTH	ANGLE	OAL	FITS
3/8"	1/2"	23.3mm	-	-	US

Tube Style (Left/Right) - 3/8" Hole

BANJO FITTINGS

HFB78



Left

HOLE	THICK	WIDTH	ANGLE	OAL	FITS
7/16"	11mm	22.2mm	90°	133mm	US

HFB79



Right

HOLE	THICK	WIDTH	ANGLE	OAL	FITS
7/16"	11mm	22.2mm	90°	133mm	US

HFB94



Left

HOLE	THICK	WIDTH	ANGLE	OAL	FITS
7/16"	11.6mm	20mm	90°	116mm	US

HFB95



Right

HOLE	THICK	WIDTH	ANGLE	OAL	FITS
7/16"	11.6mm	20mm	90°	110mm	US

HFB123



Left

HOLE	THICK	WIDTH	ANGLE	OAL	FITS
7/16"	14.8mm	22.2mm	85°	90mm	US

HFB124



Right

HOLE	THICK	WIDTH	ANGLE	OAL	FITS
7/16"	14.8mm	22.2mm	85°	90mm	US

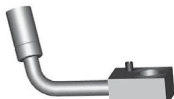
HFB176



Left

HOLE	THICK	WIDTH	ANGLE	OAL	FITS
7/16"	14.8mm	20.6mm	75°	70mm	US

HFB177



Right

HOLE	THICK	WIDTH	ANGLE	OAL	FITS
7/16"	14.8mm	20.6mm	75°	70mm	US

HFB189



Right

HOLE	THICK	WIDTH	ANGLE	OAL	FITS
7/16"	13mm	20mm	30°	90mm	US

HFB190



Left

HOLE	THICK	WIDTH	ANGLE	OAL	FITS
7/16"	15mm	20mm	30°	90mm	US

HFB201



Left

HOLE	THICK	WIDTH	ANGLE	OAL	FITS
7/16"	1/2"	22.2mm	35°	125mm	US

HFB202



Right

HOLE	THICK	WIDTH	ANGLE	OAL	FITS
7/16"	1/2"	22.2mm	55°	125mm	US

HFB237



Right

HOLE	THICK	WIDTH	ANGLE	OAL	FITS
7/16"	7/16"	22.2mm	90°	100mm	US

HFB238



Left

HOLE	THICK	WIDTH	ANGLE	OAL	FITS
7/16"	7/16"	22.2mm	90°	100mm	US

Tube Style (Left/Right) - 7/16" Hole

A = Asian

EU = European

US = United States

UNI = Universal

V = Various

BANJO FITTINGS

HFB42

TO BE DISCONTINUED



Left

HOLE	THICK	WIDTH	ANGLE	OAL	FITS
10mm	12mm	19.6mm	60°	130mm	US

HFB43

TO BE DISCONTINUED



Right

HOLE	THICK	WIDTH	ANGLE	OAL	FITS
10mm	12mm	19.6mm	60°	130mm	US

HFB52

TO BE DISCONTINUED



Left=HFB74

Right

HOLE	THICK	WIDTH	ANGLE	OAL	FITS
10mm	11mm	28.6mm	107°	145mm	US

HFB74

TO BE DISCONTINUED



Right=HFB52

Left

HOLE	THICK	WIDTH	ANGLE	OAL	FITS
10mm	11mm	28.6mm	107°	145mm	US

HFB86



Left

HOLE	THICK	WIDTH	ANGLE	OAL	FITS
10mm	11.2mm	28.6mm	70°	175mm	US

HFB87



Right

HOLE	THICK	WIDTH	ANGLE	OAL	FITS
10mm	11.2mm	28.6mm	70°	175mm	US

HFB107



Right

HOLE	THICK	WIDTH	ANGLE	OAL	FITS
10mm	12mm	20mm	75°	86mm	US

HFB108



Left

HOLE	THICK	WIDTH	ANGLE	OAL	FITS
10mm	12mm	20mm	75°	86mm	US

HFB113



Right

HOLE	THICK	WIDTH	ANGLE	OAL	FITS
10mm	11.8mm	42mm	30°	130mm	US

HFB114



Left

HOLE	THICK	WIDTH	ANGLE	OAL	FITS
10mm	11.8mm	42mm	30°	130mm	US

HFB117



Left

HOLE	THICK	WIDTH	ANGLE	OAL	FITS
10mm	12mm	20mm	90°	56mm	US

HFB118



Right

HOLE	THICK	WIDTH	ANGLE	OAL	FITS
10mm	12mm	20mm	90°	56mm	US

HFB119



Right

HOLE	THICK	WIDTH	ANGLE	OAL	FITS
10mm	12mm	20mm	90°	60mm	US

HFB120



Left

HOLE	THICK	WIDTH	ANGLE	OAL	FITS
10mm	12mm	20mm	90°	60mm	US

HFB121



Right

HOLE	THICK	WIDTH	ANGLE	OAL	FITS
10mm	11.7mm	22.2mm	65°	127mm	US

Tube Style (Left/Right) - 10mm Hole

A = Asian

EU = European

US = United States

UNI = Universal

V = Various

BANJO FITTINGS

HFB122



Left

HOLE	THICK	WIDTH	ANGLE	OAL	FITS
10mm	11.7mm	22.2mm	65°	127mm	US

HFB142



Right

HOLE	THICK	WIDTH	ANGLE	OAL	FITS
10mm	11.8mm	22.2mm	75°	99mm	US

HFB143



Left

HOLE	THICK	WIDTH	ANGLE	OAL	FITS
10mm	11.8mm	22.2mm	75°	99mm	US

HFB183



Left

HOLE	THICK	WIDTH	ANGLE	OAL	FITS
10mm	11.7mm	22.2mm	70°	-	US

HFB184



Right

HOLE	THICK	WIDTH	ANGLE	OAL	FITS
10mm	11.7mm	22.2mm	70°	-	US

HFB216



Right

HOLE	THICK	WIDTH	ANGLE	OAL	FITS
10mm	11.7mm	26mm	20°	200mm	US

HFB239



Right

HOLE	THICK	WIDTH	ANGLE	OAL	FITS
10mm	11.7mm	22.2mm	55°	200mm	US

HFB240



Left

HOLE	THICK	WIDTH	ANGLE	OAL	FITS
10mm	11.7mm	22.2mm	55°	200mm	US

HFB241



Right

HOLE	THICK	WIDTH	ANGLE	OAL	FITS
10mm	11.7mm	22.2mm	30°	100mm	US

HFB242



Left

HOLE	THICK	WIDTH	ANGLE	OAL	FITS
10mm	11.5mm	22.2mm	90°	220mm	US

HFB245



Right

HOLE	THICK	WIDTH	ANGLE	OAL	FITS
10mm	11.7mm	22.2mm	85°	100mm	US

HFB246



Left

HOLE	THICK	WIDTH	ANGLE	OAL	FITS
10mm	11.7mm	22.2mm	85°	100mm	US

HFB247



Left

HOLE	THICK	WIDTH	ANGLE	OAL	FITS
10mm	11.2mm	22.2mm	30°	-	US

HFB248



Right

HOLE	THICK	WIDTH	ANGLE	OAL	FITS
10mm	11.7mm	22.2mm	30°	-	US

HFB249



Left

HOLE	THICK	WIDTH	ANGLE	OAL	FITS
10mm	11.7mm	22.2mm	30°	-	US

Tube Style (Left/Right) - 10mm Hole

A = Asian

EU = European

US = United States

UNI = Universal

V = Various

BANJO FITTINGS

HFB250



Right

HOLE	THICK	WIDTH	ANGLE	OAL	FITS
10mm	11.7mm	22.2mm	90°	-	US

HFB259



Left

HOLE	THICK	WIDTH	ANGLE	OAL	FITS
10mm	1/2"	30.5mm	90°	110mm	US

HFB260



Right

HOLE	THICK	WIDTH	ANGLE	OAL	FITS
10mm	1/2"	30.5mm	90°	110mm	US

HFB284



Left

HOLE	THICK	WIDTH	ANGLE	OAL	FITS
10mm	11.5mm	24.4mm	75°	-	US

HFB285



Right

HOLE	THICK	WIDTH	ANGLE	OAL	FITS
10mm	11.5mm	24.4mm	75°	-	US

HFB328



Right

HOLE	THICK	WIDTH	ANGLE	OAL	FITS
10mm	11mm	22mm	110°	75mm	A

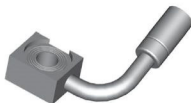
HFB329



Left

HOLE	THICK	WIDTH	ANGLE	OAL	FITS
10mm	11mm	22mm	110°	75mm	A

HFB332



Right

HOLE	THICK	WIDTH	ANGLE	OAL	FITS
10mm	11.7mm	22.2mm	90°	65mm	US

HFB333



Left

HOLE	THICK	WIDTH	ANGLE	OAL	FITS
10mm	11.7mm	22.2mm	-	95mm	US

HFB367



Left

HOLE	THICK	WIDTH	ANGLE	OAL	FITS
10mm	11mm	18mm	90°	60mm	A

HFB368



Right

HOLE	THICK	WIDTH	ANGLE	OAL	FITS
10mm	11mm	18mm	90°	60mm	A

HFB369



Left

HOLE	THICK	WIDTH	ANGLE	OAL	FITS
10mm	11mm	22mm	90°	60mm	A

HFB370



Right

HOLE	THICK	WIDTH	ANGLE	OAL	FITS
10mm	11mm	22mm	90°	60mm	A

HFB376



Left

HOLE	THICK	WIDTH	ANGLE	OAL	FITS
10mm	11.5mm	17mm	55°	-	A

HFB377



Right

HOLE	THICK	WIDTH	ANGLE	OAL	FITS
10mm	11.5mm	17mm	55°	-	A

Tube Style (Left/Right) - 10mm Hole

A = Asian

EU = European

US = United States

UNI = Universal

V = Various

BANJO FITTINGS

HFB404

TO BE DISCONTINUED



Right

HOLE	THICK	WIDTH	ANGLE	OAL	FITS
10mm	11.7mm	22.2mm	125°	-	US

HFB410



Left

HOLE	THICK	WIDTH	ANGLE	OAL	FITS
10mm	12mm	22mm	55°	-	US

HFB411



Right

HOLE	THICK	WIDTH	ANGLE	OAL	FITS
10mm	12mm	22mm	55°	-	US

HFB450



Right

HOLE	THICK	WIDTH	ANGLE	OAL	FITS
10mm	12.5mm	20mm	90°	80mm	US

HFB451



Left

HOLE	THICK	WIDTH	ANGLE	OAL	FITS
10mm	12.5mm	20mm	90°	80mm	US

HFB465

(NEW)



Right

HOLE	THICK	WIDTH	ANGLE	OAL	FITS
10mm	7/16"	23mm	-	235mm	US

HFB466

(NEW)



Left

HOLE	THICK	WIDTH	ANGLE	OAL	FITS
10mm	7/16"	23mm	-	235mm	US

HFB474

(NEW)



Right

HOLE	THICK	WIDTH	ANGLE	OAL	FITS
10mm	1/2"	18mm	-	-	US

HFB475

(NEW)



Left

HOLE	THICK	WIDTH	ANGLE	OAL	FITS
10mm	1/2"	18mm	-	-	US

HFB493

(NEW)



Left

HOLE	THICK	WIDTH	ANGLE	OAL	FITS
10mm	1/2"	18mm	90°	70mm	US

HFB494

(NEW)



Right

HOLE	THICK	WIDTH	ANGLE	OAL	FITS
10mm	1/2"	18mm	90°	70mm	US

HFB525

(NEW)



HOLE	THICK	WIDTH	ANGLE	OAL	FITS
10mm	11.4mm	20mm	25°	90mm	A

HFB526

(NEW)



HOLE	THICK	WIDTH	ANGLE	OAL	FITS
10mm	11.4mm	20mm	25°	90mm	A

Tube Style (Left/Right) - 10mm Hole

A = Asian

EU = European

US = United States

UNI = Universal

V = Various

CENTER SUPPORT FITTINGS

HFC01



MATERIAL	WIDTH	OAL	FITS
Steel	17mm	33mm	A

HFC02



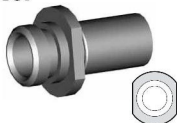
MATERIAL	WIDTH	OAL	FITS
Steel	17mm	34mm	A

HFC06



MATERIAL	WIDTH	OAL	FITS
Steel	17mm	34mm	A

HFC07



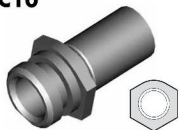
MATERIAL	WIDTH	OAL	FITS
Steel	19mm	35mm	A

HFC09



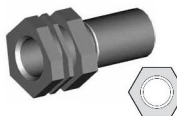
MATERIAL	WIDTH	OAL	FITS
Steel	17mm	34mm	A

HFC10



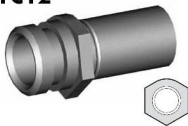
MATERIAL	WIDTH	OAL	FITS
Steel	19mm	35mm	A

HFC11



MATERIAL	WIDTH	OAL	FITS
Steel	19mm	37mm	A

HFC12



MATERIAL	WIDTH	OAL	FITS
Steel	17mm	35mm	A

HFC13



MATERIAL	WIDTH	OAL	FITS
Steel	17mm	33mm	A

HFC15



MATERIAL	WIDTH	OAL	FITS
Steel	19mm	37mm	A

HFC17



MATERIAL	WIDTH	OAL	FITS
Steel	16mm	32mm	US

HFC301



MATERIAL	WIDTH	OAL	FITS
Steel	20mm	33mm	EU

HFC307



MATERIAL	WIDTH	OAL	FITS
Steel	19mm	36mm	US

HFC315



MATERIAL	WIDTH	OAL	FITS
Steel	22mm	34mm	A

HFC327



MATERIAL	WIDTH	OAL	FITS
Steel	21mm	37mm	US

Clip Mount

A = Asian

EU = European

US = United States

UNI = Universal

V = Various

CENTER SUPPORT FITTINGS

Clip Mount

HFC331

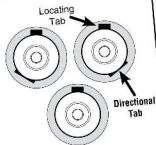
TO BE DISCONTINUED



MATERIAL	WIDTH	OAL	FITS
Steel	30mm	34mm	A

DID YOU KNOW?

Some female fittings were designed with locating and directional profiles to enable the novice installer to route the hose correctly. This meant having both left hand and right hand fittings. Hymatec designs these fittings with a locating profile only, which then makes this fitting able to fit both sides of the vehicle.



DID YOU KNOW?

Have you noticed all the different profiles in particular on female fittings between the retaining clip groove and the mounting shoulder? You will find this corresponding shape in the chassis or bracket where the fittings mount. This is designed so that the hose is routed with the correct orientation. It is very important to note this orientation when assembling brake hoses. It is particularly important to make note of the orientation before you cut off any fitting you are going to reclaim with our lifesaver. Once you cut it off you have lost your orientation reference.



Some typical examples.

A = Asian

EU = European

US = United States

UNI = Universal

V = Various

CENTER SUPPORT FITTINGS

HFC04



MATERIAL	WIDTH	OAL	FITS
Steel	30mm	90mm	A

HFC05



MATERIAL	WIDTH	OAL	FITS
Steel	20mm	30mm	A

HFC14



MATERIAL	WIDTH	OAL	FITS
Steel	33mm	80mm	US

HFC18



MATERIAL	WIDTH	OAL	FITS
Steel	24mm	48mm	US

HFC19



MATERIAL	WIDTH	OAL	FITS
Steel	24mm	48mm	US

HFC316



MATERIAL	WIDTH	OAL	FITS
Steel	22mm	36mm	A

HFC317



Left

MATERIAL	WIDTH	OAL	FITS
Steel	45mm	48mm	A

HFC318



Right

MATERIAL	WIDTH	OAL	FITS
Steel	45mm	48mm	A

HFC319



Left

MATERIAL	WIDTH	OAL	FITS
Steel	45mm	50mm	A

HFC320



Right

MATERIAL	WIDTH	OAL	FITS
Steel	45mm	50mm	A

HFC321



Left

MATERIAL	WIDTH	OAL	FITS
Steel	55mm	50mm	A

HFC322



Left

MATERIAL	WIDTH	OAL	FITS
Steel	40mm	42mm	A

HFC323



Left

MATERIAL	WIDTH	OAL	FITS
Steel	45mm	48mm	A

HFC324



Right

MATERIAL	WIDTH	OAL	FITS
Steel	55mm	50mm	A

HFC325



Right

MATERIAL	WIDTH	OAL	FITS
Steel	40mm	42mm	A

Bracket Mount

A = Asian

EU = European

US = United States

UNI = Universal

V = Various

CENTER SUPPORT FITTINGS

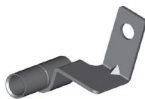
HFC326



Right

MATERIAL	WIDTH	OAL	FITS
Steel	45mm	88mm	A

HFC328



Left

MATERIAL	WIDTH	OAL	FITS
Steel	45mm	50mm	A

HFC329



Right

MATERIAL	WIDTH	OAL	FITS
Steel	45mm	50mm	A

HFC338

NEW



MATERIAL	WIDTH	OAL	FITS
Steel	18mm	-	A

HFC339

NEW



MATERIAL	WIDTH	OAL	FITS
Steel	18mm	-	A

HFC340

NEW



M6 x 1 Thread

MATERIAL	WIDTH	OAL	FITS
Steel	20mm	29mm	A

HFC341

NEW



MATERIAL	WIDTH	OAL	FITS
Steel	23mm	-	A

HFC342

NEW



MATERIAL	WIDTH	OAL	FITS
Steel	23mm	-	A

HFC343

NEW



MATERIAL	WIDTH	OAL	FITS
Steel	40mm	37mm	A

HFC344

NEW



MATERIAL	WIDTH	OAL	FITS
Steel	40mm	37mm	A

HFC345

NEW



MATERIAL	WIDTH	OAL	FITS
Steel	-	44mm	A

HFC346

NEW



MATERIAL	WIDTH	OAL	FITS
Steel	-	44mm	A

HFC347

NEW



M8 x 1.25 Thread

MATERIAL	WIDTH	OAL	FITS
Steel	20mm	29mm	FL

Bracket Mount

A = Asian

EU = European

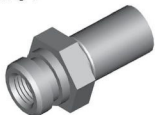
US = United States

UNI = Universal

V = Various

IMPERIAL FEMALE FITTINGS

HFIF01



Alt. HFIF36

THREAD	SEAT	MOUNT	HEX	OAL	FITS
3/8" x 24NF	Inverted	Clip	19mm	38mm	V

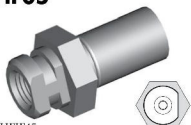
HFIF01B



Brass

THREAD	SEAT	MOUNT	HEX	OAL	FITS
3/8" x 24NF	Inverted	Clip	17mm	36mm	V

HFIF05



Alt. HFIF45

THREAD	SEAT	MOUNT	HEX	OAL	FITS
3/8" x 24NF	Inverted	Clip	19mm	38mm	V

HFIF07



THREAD	SEAT	MOUNT	HEX	OAL	FITS
3/8" x 24NF	Inverted	Clip	16mm	41mm	US

HFIF08



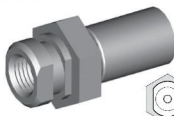
THREAD	SEAT	MOUNT	HEX	OAL	FITS
3/8" x 24NF	Inverted	Clip	16mm	41mm	US

HFIF10



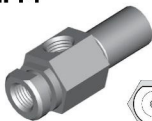
THREAD	SEAT	MOUNT	HEX	OAL	FITS
3/8" x 24NF	Inverted	Clip	16mm	39mm	US

HFIF11



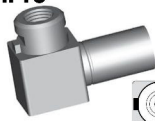
THREAD	SEAT	MOUNT	HEX	OAL	FITS
3/8" x 24NF	Inverted	Clip	19mm	38mm	V

HFIF14



THREAD	SEAT	MOUNT	HEX	OAL	FITS
3/8" x 24NF x 2	Inverted	Clip	19mm	30mm	US

HFIF18



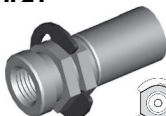
THREAD	SEAT	MOUNT	HEX	OAL	FITS
3/8" x 24NF	Inverted	Clip	-	41mm	US

HFIF19



THREAD	SEAT	MOUNT	HEX	OAL	FITS
3/8" x 24NF	Inverted	Clip	16mm	38mm	US

HFIF21



THREAD	SEAT	MOUNT	HEX	OAL	FITS
3/8" x 24NF	DPS	Clip	16mm	32mm	US

HFIF26



THREAD	SEAT	MOUNT	HEX	OAL	FITS
3/8" x 24NF	Inverted	Clip	16mm	40mm	US

HFIF29



Left

THREAD	SEAT	MOUNT	HEX	OAL	FITS
3/8" x 24NF	Inverted	Clip	78mm	US	

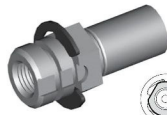
HFIF30



Right

THREAD	SEAT	MOUNT	HEX	OAL	FITS
3/8" x 24NF	Inverted	Clip	78mm	US	

HFIF32



THREAD	SEAT	MOUNT	HEX	OAL	FITS
3/8" x 24NF	Inverted	Clip	17mm	41mm	US

Clip Mount - 3/8" x 24NF

TO BE DISCONTINUED

A = Asian

EU = European

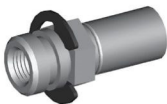
US = United States

UNI = Universal

V = Various

IMPERIAL FEMALE FITTINGS

HFIF36



Alt. HFIF01

THREAD	SEAT	MOUNT	HEX	OAL	FITS
3/8" x 24NF	Inverted	Clip	16mm	39mm	US

HFIF38



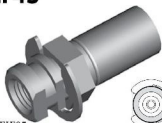
THREAD	SEAT	MOUNT	HEX	OAL	FITS
3/8" x 24NF	Inverted	Clip	17mm	40mm	US

HFIF40



THREAD	SEAT	MOUNT	HEX	OAL	FITS
3/8" x 24NF x 2	Inverted	Clip	16mm	48mm	US

HFIF45



Alt. HFIF05

THREAD	SEAT	MOUNT	HEX	OAL	FITS
3/8" x 24NF	Inverted	Clip	16mm	39mm	US

HFIF64



Left

THREAD	SEAT	MOUNT	HEX	OAL	FITS
3/8" x 24NF x 2	Inverted	Clip	19mm	137mm	US

HFIF65

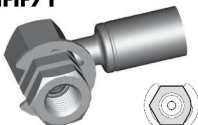


Right

THREAD	SEAT	MOUNT	HEX	OAL	FITS
3/8" x 24NF x 2	Inverted	Clip	19mm	137mm	US

Clip Mount - 3/8" x 24NF

HFIF71



THREAD	SEAT	MOUNT	HEX	OAL	FITS
3/8" x 24NF	Inverted	Clip	16mm	45mm	US

HFIF72



THREAD	SEAT	MOUNT	HEX	OAL	FITS
3/8" x 24NF	Inverted	Clip	17mm	47mm	US

HFIF74



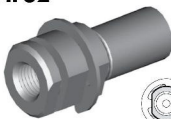
THREAD	SEAT	MOUNT	HEX	OAL	FITS
3/8" x 24NF x 2	Inverted	Clip	19mm	92mm	US

HFIF76



THREAD	SEAT	MOUNT	HEX	OAL	FITS
3/8" x 24NF x 2	Inverted	Clip	16mm	90mm	US

HFIF82



THREAD	SEAT	MOUNT	HEX	OAL	FITS
3/8" x 24NF	Inverted	Clip	16mm	40mm	US

HFIF83



THREAD	SEAT	MOUNT	HEX	OAL	FITS
3/8" x 24NF	Inverted	Clip	16mm	55mm	US

HFIF85



THREAD	SEAT	MOUNT	HEX	OAL	FITS
3/8" x 24NF	Inverted	Clip	17.5mm	50mm	US

HFIF87



THREAD	SEAT	MOUNT	HEX	OAL	FITS
3/8" x 24NF x 2	Inverted	Clip	17.5mm	50mm	US

HFIF103



THREAD	SEAT	MOUNT	HEX	OAL	FITS
3/8" x 24NF	Inverted	Clip	17.5mm	52mm	US

A = Asian

EU = European

US = United States

UNI = Universal

V = Various

IMPERIAL FEMALE FITTINGS

HFIF106



THREAD	SEAT	MOUNT	HEX	OAL	FITS
3/8" x 24NF	Inverted	Clip	16mm	68mm	US

HFIF107



THREAD	SEAT	MOUNT	HEX	OAL	FITS
3/8" x 24F x 2	Inverted	Clip	19mm	57mm	US

HFIF140



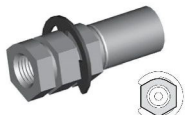
THREAD	SEAT	MOUNT	HEX	OAL	FITS
3/8" x 24NF	Inverted	Clip	17mm	64mm	US

HFIF143



THREAD	SEAT	MOUNT	HEX	OAL	FITS
3/8" x 24NF	Inverted	Clip	16mm	68mm	US

HFIF301



THREAD	SEAT	MOUNT	HEX	OAL	FITS
3/8" x 24NF	Inverted	Clip	16mm	43mm	US

Clip Mount - 3/8" x 24NF

DID YOU KNOW?

Manufacturers design their fittings to suit resources available to them. For instance, some manufacturers make their female fittings with a 3/4" hex to give them a shoulder to mount to, but others prefer to make them from 5/8" hex and then supply a shoulder clip for the shoulder to mount to. BrakeQuip supplies these in both styles. Therefore the following applies.
 HFIF01 = HFIF36, HFIF02 = HFIF24,
 HFIF05 = HFIF45 and vice versa.

IMPERIAL FEMALE FITTINGS

HFIF02



Alt. HFIF24

THREAD	SEAT	MOUNT	HEX	OAL	FITS
7/16" x 24NS	Inverted	Clip	19mm	38mm	V

HFIF09



THREAD	SEAT	MOUNT	HEX	OAL	FITS
7/16" x 24NS	Inverted	Clip	16mm	45mm	US

HFIF20



THREAD	SEAT	MOUNT	HEX	OAL	FITS
7/16" x 24NS	Inverted	Clip	16mm	44mm	US

HFIF24



Alt. HFIF02

THREAD	SEAT	MOUNT	HEX	OAL	FITS
7/16" x 24NS	Inverted	Clip	16mm	40mm	US

HFIF33



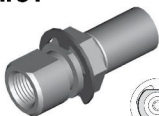
THREAD	SEAT	MOUNT	HEX	OAL	FITS
7/16" x 24NS	Inverted	Clip	17mm	41mm	US

HFIF35



THREAD	SEAT	MOUNT	HEX	OAL	FITS
7/16" x 24NS	Inverted	Clip	16mm	46mm	US

HFIF51



THREAD	SEAT	MOUNT	HEX	OAL	FITS
7/16" x 24NS	Inverted	Clip	17mm	46mm	US

HFIF73



THREAD	SEAT	MOUNT	HEX	OAL	FITS
7/16" x 24NS	Inverted	Clip	17mm	47mm	US

HFIF116



THREAD	SEAT	MOUNT	HEX	OAL	FITS
7/16" x 24NS	Inverted	Clip	5/8"	-	US

HFIF142

NEW



THREAD	SEAT	MOUNT	HEX	OAL	FITS
7/16" x 24NF	Inverted	Clip	16mm	46mm	US

HFIF141

NEW



Note: 7/16" x 20NF

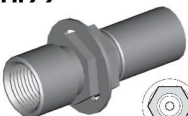
THREAD	SEAT	MOUNT	HEX	OAL	FITS
7/16" x 20NF	Inverted	Clip	16mm	46mm	US

HFIF63



THREAD	SEAT	MOUNT	HEX	OAL	FITS
1/2" x 20NF	Inverted	Clip	47mm	US	

HFIF79



THREAD	SEAT	MOUNT	HEX	OAL	FITS
1/2" x 20NF	Inverted	Clip	16mm	45mm	US

Clip Mount - 7/16" x 24NS

Clip Mount 1/2"

A = Asian

EU = European

US = United States

UNI = Universal

V = Various

IMPERIAL FEMALE FITTINGS

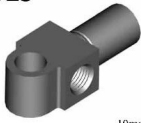
HFIF23



12mm Hole

THREAD	SEAT	MOUNT	HOLE	OAL	FITS
3/8" x 24NF x 2	Inverted	Bolted	12mm	65mm	US

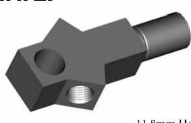
HFIF25



10mm Hole

THREAD	SEAT	MOUNT	HOLE	OAL	FITS
3/8" x 24NF x 2	Inverted	Bolted	10mm	49mm	US

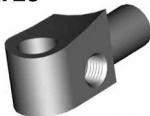
HFIF27



11.8mm Hole

THREAD	SEAT	MOUNT	HOLE	OAL	FITS
3/8" x 24NF x 2	Inverted	Bolted	11.8mm	70mm	US

HFIF28



11.8mm Hole

THREAD	SEAT	MOUNT	HOLE	OAL	FITS
3/8" x 24NF x 2	Inverted	Bolted	11.8mm	52mm	US

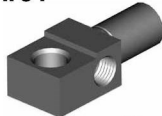
HFIF31



11.9mm Hole

THREAD	SEAT	MOUNT	HOLE	OAL	FITS
3/8" x 24NF x 2	Inverted	Bolted	11.9mm	52mm	US

HFIF34



8/10mm Hole

THREAD	SEAT	MOUNT	HOLE	OAL	FITS
3/8" x 24NF x 2	Inverted	Bolted	8/10mm	49mm	US

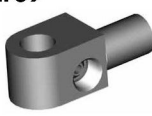
HFIF37



12mm Hole

THREAD	SEAT	MOUNT	HOLE	OAL	FITS
3/8" x 24NF x 2	Inverted	Bolted	12mm	53mm	US

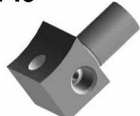
HFIF39



11.8mm Hole

THREAD	SEAT	MOUNT	HOLE	OAL	FITS
3/8" x 24NF x 2	Inverted	Bolted	11.8mm	52mm	US

HFIF43



7.3mm Hole

THREAD	SEAT	MOUNT	HOLE	OAL	FITS
3/8" x 2	Inverted	Bolted	-	22mm	US

HFIF46



10mm Hole

THREAD	SEAT	MOUNT	HOLE	OAL	FITS
7/16" x 24NS	Inverted	Bolted	10mm	66mm	US

HFIF47



12mm Hole

THREAD	SEAT	MOUNT	HOLE	OAL	FITS
3/8" x 24NF x 2	Inverted	Bolted	12mm	50mm	US

HFIF48



11.5mm Hole

THREAD	SEAT	MOUNT	HOLE	OAL	FITS
3/8" x 24NF x 2	Inverted	Bolted	11.5mm	53mm	US

HFIF53



11.8mm Hole

THREAD	SEAT	MOUNT	HOLE	OAL	FITS
3/8" x 24NF x 2	Inverted	Bolted	11.8mm	53mm	US

HFIF54



12mm Hole

THREAD	SEAT	MOUNT	HOLE	OAL	FITS
7/16" x 24NS	Inverted	Bolted	12mm	51mm	US

HFIF55



15mm Hole

THREAD	SEAT	MOUNT	HOLE	OAL	FITS
3/8" x 24NF x 2	Inverted	Bolted	15mm	58mm	US

Bolt On Mount

A = Asian

EU = European

US = United States

UNI = Universal

V = Various

IMPERIAL FEMALE FITTINGS

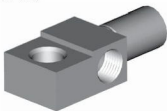
HFIF56



11.8mm Hole

THREAD	SEAT	MOUNT	HOLE	OAL	FITS
3/8" x 24NF x 2	Inverted	Bolted	11.8mm	25mm	US

HFIF57



8/10mm Hole

THREAD	SEAT	MOUNT	HOLE	OAL	FITS
7/16" x 24NS x 2	Inverted	Bolted	8/10mm	54mm	US

HFIF58



11.5mm Hole

THREAD	SEAT	MOUNT	HOLE	OAL	FITS
3/8" x 24NS x 2	Inverted	Bolted	11.5mm	58mm	US

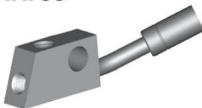
HFIF59



12mm Hole

THREAD	SEAT	MOUNT	HOLE	OAL	FITS
3/8" x 24NF x 2	Inverted	Bolted	12mm	100mm	US

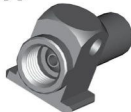
HFIF66



11.9mm Hole

THREAD	SEAT	MOUNT	HOLE	OAL	FITS
3/8" x 24NF x 2	Inverted	Bolted	11.9mm	93mm	US

HFIF77



6.2mm Hole

THREAD	SEAT	MOUNT	HOLE	OAL	FITS
1/2" x 20NF	Inverted	Bolted	6.2mm	42mm	US

HFIF80



11.8mm Hole

THREAD	SEAT	MOUNT	HOLE	OAL	FITS
3/8" x 24NF x 2	Inverted	Bolted	11.8mm	52mm	US

HFIF88



11.6mm Hole

THREAD	SEAT	MOUNT	HOLE	OAL	FITS
3/8" x 24NF	Inverted	Bolted	11.6mm	51mm	US

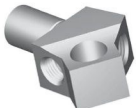
HFIF94



8/10mm Hole

THREAD	SEAT	MOUNT	HOLE	OAL	FITS
3/8" x 2	Inverted	Bolted	10/8mm	58mm	US

HFIF110



12.0mm Hole

THREAD	SEAT	MOUNT	HOLE	OAL	FITS
3/8" x 24NF x 2	Inverted	Bolted	12mm	-	US

HFIF111



11.9mm Hole

THREAD	SEAT	MOUNT	HOLE	OAL	FITS
7/16" x 24NS x 2	Inverted	Bolt On	11.9mm	51mm	US

HFIF115



11.9mm Hole

THREAD	SEAT	MOUNT	HOLE	OAL	FITS
7/16" x 24NS x 2	Inverted	Bolted	11.9mm	57mm	US

HFIF129



Suits Nissan Sports
Use in conjunction with HF17 or HF33

8.75mm Hole

THREAD	SEAT	MOUNT	HOLE	OAL	FITS
3/8" x 24NF	Inverted	Bolted	8.75mm	75mm	A

HFIF157

(NEW)



10mm Hole

THREAD	SEAT	MOUNT	HEX	OAL	FITS
7/16" x 24NS x 2	Inverted	Bolted		53mm	US

HFIF303



11.4mm Hole

THREAD	SEAT	MOUNT	HOLE	OAL	FITS
3/8NS-20NS	Inverted	Bolted	11.4mm	70mm	US

Bolt On Mount

A = Asian

EU = European

US = United States

UNI = Universal

V = Various

IMPERIAL FEMALE FITTINGS

HFIF03



THREAD	SEAT	MOUNT	HEX	OAL	FITS
1/2" x 20NS	DPS	-	19mm	50mm	US

HFIF06



THREAD	SEAT	MOUNT	HEX	OAL	FITS
1/2" x 20NF	Inverted	-	17mm	38mm	UNI

HFIFX01



Alt. HFIFX23
5/8" x 18NF External Thread

THREAD	SEAT	MOUNT	HEX	OAL	FITS
7/16" x 24NS	Inverted	Bulkhead	19mm	45mm	V

HFIFX02



5/8" x 18NF External Thread

THREAD	SEAT	MOUNT	HEX	OAL	FITS
3/8" x 24NF	Inverted	Bulkhead	19mm	45mm	V

HFIFX03



5/8" x 18NF External Thread

THREAD	SEAT	MOUNT	HEX	OAL	FITS
3/8" BSF	Inverted	Bulkhead	19mm	45mm	V

HFIFX04



5/8" x 18NF External Thread

THREAD	SEAT	MOUNT	HEX	OAL	FITS
7/16" x 20NF	Inverted	Bulkhead	19mm	45mm	V

HFIFX05



5/8" x 18NF External Thread

THREAD	SEAT	MOUNT	HEX	OAL	FITS
3/8" x 24NF	DPS	Bulkhead	19mm	45mm	V

HFIFX06



5/8" x 18NF External Thread

THREAD	SEAT	MOUNT	HEX	OAL	FITS
7/16" x 24NS	Inverted	Bulkhead	16mm	46mm	US

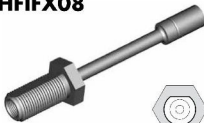
HFIFX07



3/4" x 16NF External Thread

THREAD	SEAT	MOUNT	HEX	OAL	FITS
7/16" x 24NS	Inverted	Bulkhead	25mm	65mm	US

HFIFX08



3/4" x 16NF External Thread

THREAD	SEAT	MOUNT	HEX	OAL	FITS
7/16" x 24NS	Inverted	Bulkhead	25mm	155mm	US

HFIFX09



1 1/16" x 18NS External Thread

THREAD	SEAT	MOUNT	HEX	OAL	FITS
1 1/4" x 20NF	Inverted	Bulkhead	22mm	46mm	US

HFIFX10



5/8" x 18NF External Thread

THREAD	SEAT	MOUNT	HEX	OAL	FITS
3/8" x 24NF	Inverted	Bulkhead	22mm	117mm	US

HFIFX11



5/8" x 18NF External Thread

THREAD	SEAT	MOUNT	HEX	OAL	FITS
3/8" x 24NF	Inverted	Bulkhead	19mm	46mm	US

HFIFX12



5/8" x 18NF External Thread

THREAD	SEAT	MOUNT	HEX	OAL	FITS
7/16" x 24NS	Inverted	Bulkhead	22mm	54mm	US

No Mount

Bulkhead Mount

A = Asian

EU = European

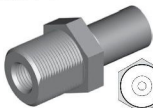
US = United States

UNI = Universal

V = Various

IMPERIAL FEMALE FITTINGS

HFIFX14



3/4" x 16NF External Thread

THREAD	SEAT	MOUNT	HEX	OAL	FITS
3/8" x 24NF	Inverted	Bulkhead	22mm	45mm	US

HFIFX15



5/8" x 18NF External Thread

THREAD	SEAT	MOUNT	HEX	OAL	FITS
3/8" x 24NF	Inverted	Bulkhead	16mm	47mm	US

HFIFX16



3/4" x 16NF External Thread

THREAD	SEAT	MOUNT	HEX	OAL	FITS
7/16" x 24NS	Inverted	Bulkhead	22mm	45mm	US

HFIFX17

TO BE DISCONTINUED



7/8" x 14NF External Thread

THREAD	SEAT	MOUNT	HEX	OAL	FITS
1/2" x 20NF	Inverted	Bulkhead	27mm	63mm	US

HFIFX18



7/8" x 14NF External Thread

THREAD	SEAT	MOUNT	HEX	OAL	FITS
1/2" x 20NF	Inverted	Bulkhead	27mm	133mm	US

HFIFX19

NEW

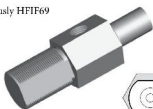


7/8" x 14NF External Thread

THREAD	SEAT	MOUNT	HEX	OAL	FITS
7/16" x 24NS	Inverted	Bulkhead	25.4mm	61mm	US

HFIFX21

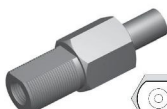
Previously HFIF69



7/8" x 18NS External Thread

THREAD	SEAT	MOUNT	HEX	OAL	FITS
7/16" x 24NS x 2	Inverted	Bulkhead	25mm	80mm	US

HFIFX22



7/8" x 14NF External Thread

THREAD	SEAT	MOUNT	HEX	OAL	FITS
7/16" x 24NS	Inverted	Bulkhead	1"	80mm	US

HFIFX23



Alt. HFIFX01

5/8" x 18NF External Thread

THREAD	SEAT	MOUNT	HEX	OAL	FITS
7/16" x 24NS	Inverted	Bulkhead	5/8"	46mm	V

HFIFX20



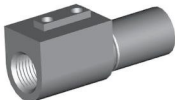
5/8" x 18NF External Thread

THREAD	SEAT	MOUNT	HEX	OAL	FITS
1/8" NF1	-	Bulkhead	19mm	45mm	US

DID YOU KNOW?

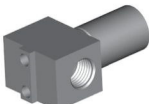
Most female fittings with a bulkhead mount use a 5/8" x 18NF thread, and this is the only thread that BQ supplies. However some of these fittings come with a M16 x 1.5 or a fine brass thread. If in doubt, supply a BQ13 nut with the fitting.

HFIF15



THREAD	SEAT	MOUNT	HEX	OAL	FITS
3/8" x 24NF	Inverted	Bracket	-	46mm	US

HFIF22



THREAD	SEAT	MOUNT	HEX	OAL	FITS
3/8" x 24NF x 2	Inverted	Bracket	-	41mm	US

HFIF41



Right

THREAD	SEAT	MOUNT	HEX	OAL	FITS
3/8" x 24NF	Inverted	Bracket	-	50mm	US

Bulkhead Mount

Bracket Mount

A = Asian

EU = European

US = United States

UNI = Universal

V = Various

IMPERIAL FEMALE FITTINGS

HFIF42



Left

THREAD	SEAT	MOUNT	HEX	OAL	FITS
3/8" x 24NF	Inverted	Bracket	-	50mm	US

HFIF44



THREAD	SEAT	MOUNT	HEX	OAL	FITS
3/8" x 24NF	Inverted	Bracket	-	50mm	US

HFIF52



THREAD	SEAT	MOUNT	HEX	OAL	FITS
7/16" x 24NS	Inverted	Bracket	-	50mm	US

HFIF60



THREAD	SEAT	MOUNT	HEX	OAL	FITS
3/8" x 24NF x 2	Inverted	Bracket	-	102mm	US

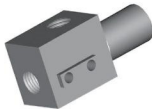
HFIF60A



Use BQB07 Bracket

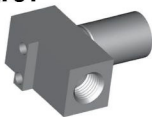
THREAD	SEAT	MOUNT	HEX	OAL	FITS
3/8" x 24NF x 2	Inverted	Bracket	-	42mm	US

HFIF70



THREAD	SEAT	MOUNT	HEX	OAL	FITS
3/8" x 24NF x 2	Inverted	Bracket	-	48mm	US

HFIF81



THREAD	SEAT	MOUNT	HEX	OAL	FITS
3/8" x 24NF	Inverted	Bracket	-	38mm	US

HFIF90



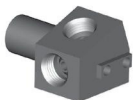
THREAD	SEAT	MOUNT	HEX	OAL	FITS
3/8" x 24NF x 2	Inverted	Bracket	-	37mm	US

HFIF99



THREAD	SEAT	MOUNT	HEX	OAL	FITS
3/8" x 24NF x 2	Inverted	Bracket	-	50mm	US

HFIF109



THREAD	SEAT	MOUNT	HEX	OAL	FITS
7/16" x 24NS x 2	Inverted	Bracket	-	46mm	US

HFIF120

NEW



Use with wire bracket.

THREAD	SEAT	MOUNT	HEX	OAL	FITS
3/8" x 24NF	Inverted	Clip	15.98mm	42mm	US

HFIF127



TO BE DISCONTINUED

THREAD	SEAT	MOUNT	HEX	OAL	FITS
3/8" x 24NF	Inverted	Bracket	-	-	US

HFIF128



TO BE DISCONTINUED

Right

THREAD	SEAT	MOUNT	HEX	OAL	FITS
3/8" x 24NF	Inverted	Bracket	-	-	US

HFIF138



THREAD	SEAT	MOUNT	HEX	OAL	FITS
7/16" x 24NS x 2	Inverted	Bracket	-	53mm	US

HFIF146

NEW



THREAD	SEAT	MOUNT	HEX	OAL	FITS
3/8" x 24NF	Inverted	Bracket	-	140mm	US

Bracket Mount

A = Asian

EU = European

US = United States

UNI = Universal

V = Various

IMPERIAL FEMALE FITTINGS

Bracket Mount

HFIF147

NEW



THREAD	SEAT	MOUNT	HEX	OAL	FITS
1/8" x 24NF	Inverted	Bracket	-	140mm	US

HFIF148

NEW



THREAD	SEAT	MOUNT	HEX	OAL	FITS
3/8" x 24NF	Inverted	Bracket	-	52.5mm	US

HFIF149

NEW



THREAD	SEAT	MOUNT	HEX	OAL	FITS
3/8" x 24NF	Inverted	Bracket	-	52.5mm	US

HFIF152

NEW



THREAD	SEAT	MOUNT	HEX	OAL	FITS
3/8" x 24NF x 2	Inverted	Bracket	-	47mm	US

HFIF153

NEW

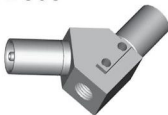


THREAD	SEAT	MOUNT	HEX	OAL	FITS
3/8" x 24NF x 2	Inverted	Bracket	-	57mm	US

HFIF304

THREAD	SEAT	MOUNT	HEX	OAL	FITS
3/8" x 24NF x 2	Inverted	Bracket	-	51mm	US

HFIF306



THREAD	SEAT	MOUNT	HEX	OAL	FITS
3/8" x 24NF	Inverted	Bracket	-	58mm	US

BQ71



Bracket Retaining Screws
(PKT 50)

This thread forming screw is required to secure bracket to bracket mount fittings.

IMPERIAL FEMALE FITTINGS

HFIM01



THREAD	THREAD LENGTH	HEX	OAL	FITS
3/8" x 24NF	12.5mm	16mm	40mm	V

HFIM01B



Brass

THREAD	THREAD LENGTH	HEX	OAL	FITS
3/8" x 24NF	12.5mm	14mm	40mm	V

HFIM03



THREAD	THREAD LENGTH	HEX	OAL	FITS
7/16" x 20NF	12mm	16mm	40mm	V

HFIM04



Includes
Copper Sealing Washer

THREAD	THREAD LENGTH	HEX	OAL	FITS
1/16" x 14NF	20mm	19mm	30mm	V

HFIM08



THREAD	THREAD LENGTH	HEX	OAL	FITS
1/2" x 20NF	15.5mm	17mm	43mm	V

HFIM09



THREAD	THREAD LENGTH	HEX	OAL	FITS
7/16" x 20NF	13.5mm	16mm	49mm	US

HFIM10



THREAD	THREAD LENGTH	HEX	OAL	FITS
3/8" x 24NF	12.5mm	16mm	44mm	V

HFIM11



THREAD	THREAD LENGTH	HEX	OAL	FITS
3/8" x 24NF	12mm	16mm	68mm	V

HFIM13



THREAD	THREAD LENGTH	HEX	OAL	FITS
7/16" x 24NS	12mm	16mm	40mm	V

HFIM14



THREAD	THREAD LENGTH	HEX	OAL	FITS
7/16" x 24NS	12mm	16mm	29mm	US

HFIM15



THREAD	THREAD LENGTH	HEX	OAL	FITS
3/8" x 20SF	12.5mm	16mm	40mm	EU

HFIM16



THREAD	THREAD LENGTH	HEX	OAL	FITS
7/16" x 20NF	13mm	17mm	61mm	US

HFIM18



THREAD	THREAD LENGTH	HEX	OAL	FITS
3/8" x 24NF	12mm	16mm	53mm	US

HFIM19



THREAD	THREAD LENGTH	HEX	OAL	FITS
1/8" x 27NPT	12mm	14mm	40mm	V

HFIM21



THREAD	THREAD LENGTH	HEX	OAL	FITS
3/8" x 24NF	12.5mm	16mm	53mm	V

Standard Mount

A = Asian

EU = European

US = United States

UNI = Universal

V = Various

IMPERIAL MALE FITTINGS

Standard Mount

HFIM24



THREAD	THREAD LENGTH	HEX	OAL	FITS
1/2" x 20x1	12mm	16mm	44mm	US

HFIM25



THREAD	THREAD LENGTH	HEX	OAL	FITS
3/8" x 24x1	12mm	16mm	71mm	US

HFIM26



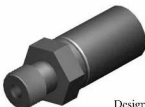
THREAD	THREAD LENGTH	HEX	OAL	FITS
7/16" x 24xS	13.5mm	16mm	76mm	US

HFIM27



THREAD	THREAD LENGTH	HEX	OAL	FITS
7/16" x 20xT	13mm	16mm	63mm	US

HFIM32



Designed for bonded washer

THREAD	THREAD LENGTH	HEX	OAL	FITS
1/8" x 28xSPP	10mm	14mm	37mm	V

AN Joiner

HFIM28



No. 3 JIC

THREAD	THREAD LENGTH	HEX	OAL	FITS
3/8" x 24x1	14mm	14mm	42mm	V

HFIM29



No. 4 JIC

THREAD	THREAD LENGTH	HEX	OAL	FITS
7/16" x 20x1	14mm	14mm	43mm	V

Bulkhead Mount

HFIM02



THREAD	THREAD LENGTH	HEX	OAL	FITS
3/8" x 24x1	24mm	16mm	52mm	V

HFIM05



THREAD	THREAD LENGTH	HEX	OAL	FITS
3/8"x-1/2"x1	26.5mm	16mm	59mm	EU

HFIM06



THREAD	THREAD LENGTH	HEX	OAL	FITS
7/16" x 20x1	28.5mm	17mm	56mm	V

HFIM07



THREAD	THREAD LENGTH	HEX	OAL	FITS
1/2" x 20x1	32mm	19mm	60mm	V

HFIM12



THREAD	THREAD LENGTH	HEX	OAL	FITS
3/8" x 24x1	34mm	16mm	75mm	EU

A = Asian

EU = European

US = United States

UNI = Universal

V = Various

IMPERIAL MALE FITTINGS

HFIM17



THREAD	THREAD LENGTH	HEX	OAL	FITS
3/8" x 24NF	12mm	16mm	49mm	US

HFIM22



THREAD	THREAD LENGTH	HEX	OAL	FITS
7/16" x 30NF	13mm	16mm	51mm	US

Clip Mount

METRIC FEMALE FITTINGS

HFMF01



THREAD	SEAT	MOUNT	HEX	OAL	FITS
M10 x 1	Inverted	Clip	17mm	36mm	V

HFMF02



THREAD	SEAT	MOUNT	HEX	OAL	FITS
M10 x 1	Inverted	Clip	17mm	47mm	A

HFMF04



THREAD	SEAT	MOUNT	HEX	OAL	FITS
M10 x 1	Inverted	Clip	17mm	38mm	A

HFMF06



THREAD	SEAT	MOUNT	HEX	OAL	FITS
M10 x 1	Inverted	Clip	-	39mm	A

HFMF07



THREAD	SEAT	MOUNT	HEX	OAL	FITS
M12 x 1	Inverted	Clip	-	45mm	A

HFMF09



THREAD	SEAT	MOUNT	HEX	OAL	FITS
M10 x 1.25	Inverted	Clip	17mm	37mm	V

HFMF10



THREAD	SEAT	MOUNT	HEX	OAL	FITS
M10 x 1	Inverted	Clip	19mm	46mm	A

HFMF11



THREAD	SEAT	MOUNT	HEX	OAL	FITS
M10 x 1	Inverted	Clip	19mm	37mm	A

HFMF12



THREAD	SEAT	MOUNT	HEX	OAL	FITS
M8 x 1	Inverted	Clip	16mm	47mm	A

HFMF13



THREAD	SEAT	MOUNT	HEX	OAL	FITS
M10 x 1	Inverted	Clip	-	36mm	A

HFMF14



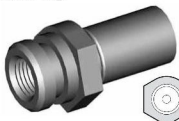
THREAD	SEAT	MOUNT	HEX	OAL	FITS
M10 x 1	Inverted	Clip	17mm	45mm	A

HFMF15



THREAD	SEAT	MOUNT	HEX	OAL	FITS
M10 x 1	Inverted	Clip	17mm	27mm	A

HFMF16



THREAD	SEAT	MOUNT	HEX	OAL	FITS
M10 x 1	Inverted	Clip	19mm	37mm	V

HFMF19



THREAD	SEAT	MOUNT	HEX	OAL	FITS
M12 x 1	Inverted	Clip	19mm	47mm	A

HFMF20



THREAD	SEAT	MOUNT	HEX	OAL	FITS
M10 x 1	Inverted	Clip	17mm	38mm	A

Clip Mount - Inverted Seat

A = Asian

EU = European

US = United States

UNI = Universal

V = Various

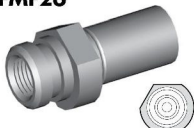
METRIC FEMALE FITTINGS

HFMF25



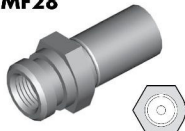
THREAD	SEAT	MOUNT	HEX	OAL	FITS
M10 x 1	Inverted	Clip	19mm	20mm	A

HFMF26



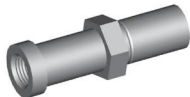
THREAD	SEAT	MOUNT	HEX	OAL	FITS
M10 x 1	Inverted	Clip	17mm	38mm	A

HFMF28



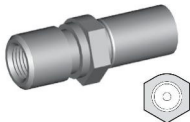
THREAD	SEAT	MOUNT	HEX	OAL	FITS
M10 x 1	Inverted	Clip	17mm	37mm	V

HFMF29



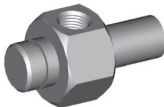
THREAD	SEAT	MOUNT	HEX	OAL	FITS
M10 x 1	Inverted	-	17mm	34mm	A

HFMF31



THREAD	SEAT	MOUNT	HEX	OAL	FITS
M10 x 1	Inverted	Clip	17mm	45mm	V

HFMF36



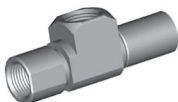
THREAD	SEAT	MOUNT	HEX	OAL	FITS
M10x1-2	Inverted	Clip	26mm	30mm	A

HFMF37



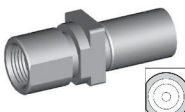
THREAD	SEAT	MOUNT	HEX	OAL	FITS
M10x1-2	Inverted	Clip	26mm	30mm	A

HFMF42



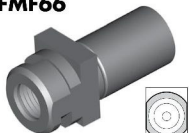
THREAD	SEAT	MOUNT	HEX	OAL	FITS
M12 x 1-2	Inverted	Clip	-	37mm	US

HFMF43



THREAD	SEAT	MOUNT	HEX	OAL	FITS
M12 x 1	Inverted	Clip	-	45mm	US

HFMF66



THREAD	SEAT	MOUNT	HEX	OAL	FITS
M10 x 1	Inverted	Clip	-	36mm	US

HFMF68



THREAD	SEAT	MOUNT	HEX	OAL	FITS
M10 x 1	Inverted	Clip	36mm	37mm	US

HFMF91



THREAD	SEAT	MOUNT	HEX	OAL	FITS
M12 x 1	Inverted	Clip	19mm	40mm	EU

HFMF92



THREAD	SEAT	MOUNT	HEX	OAL	FITS
M12 x 1	Inverted	Clip	16mm	45mm	US

HFMF93



THREAD	SEAT	MOUNT	HEX	OAL	FITS
M10 x 1	Inverted	Clip	17mm	47mm	BSJ

HFMF307



THREAD	SEAT	MOUNT	HEX	OAL	FITS
M10 x 1	Inverted	Clip	17mm	46mm	A

Clip Mount - Inverted Seat

A = Asian

EU = European

US = United States

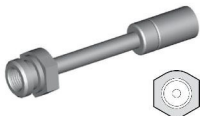
UNI = Universal

V = Various

METRIC FEMALE FITTINGS

Clip Mount - Inverted Seat

HFMF308



THREAD	SEAT	MOUNT	HEX	OAL	FITS
M10 x 1	Inverted	Clip	19mm	98mm	A

HFMF333



THREAD	SEAT	MOUNT	HEX	OAL	FITS
M10 x 1	Inverted	Clip	17mm	41mm	A

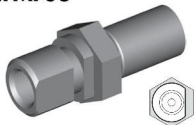
HFMF366

NEW



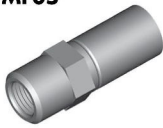
THREAD	SEAT	MOUNT	HEX	OAL	FITS
M10 x 1	Inverted	Clip	16mm	45mm	A

HFMF03



THREAD	SEAT	MOUNT	HEX	OAL	FITS
M10 x 1	DPS	Clip	19mm	46mm	A

HFMF05



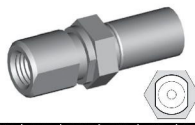
THREAD	SEAT	MOUNT	HEX	OAL	FITS
M10 x 1	DPS	Clip	14mm	38mm	EU

HFMF08



THREAD	SEAT	MOUNT	HEX	OAL	FITS
M10 x 1	DPS	Clip	17mm	41mm	V

HFMF21



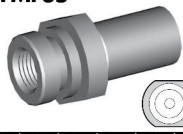
THREAD	SEAT	MOUNT	HEX	OAL	FITS
M10 x 1.25	DPS	Clip	17mm	47mm	EU

HFMF24



THREAD	SEAT	MOUNT	HEX	OAL	FITS
M10 x 1	DPS	Clip	19mm	38mm	V

HFMF35



THREAD	SEAT	MOUNT	HEX	OAL	FITS
M10 x 1	DPS	Clip	19mm	37mm	A

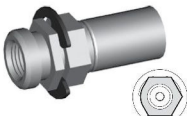
Clip Mount - DPS Seat

HFMF38



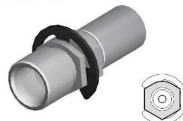
THREAD	SEAT	MOUNT	HEX	OAL	FITS
M10 x 1	DPS	Clip	16mm	57mm	US

HFMF39



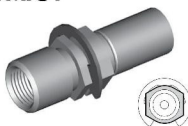
THREAD	SEAT	MOUNT	HEX	OAL	FITS
M10 x 1	DPS	Clip	16mm	39mm	US

HFMF47



THREAD	SEAT	MOUNT	HEX	OAL	FITS
M12 x 1	DPS	Clip	16mm	46mm	US

HFMF51



THREAD	SEAT	MOUNT	HEX	OAL	FITS
M12 x 1	DPS	Clip	16mm	47mm	US

HFMF54



THREAD	SEAT	MOUNT	HEX	OAL	FITS
M10 x 1	DPS	Clip	15.5mm	37mm	EU

HFMF55



THREAD	SEAT	MOUNT	HEX	OAL	FITS
M10 x 1	DPS	Clip	19mm	46mm	V

A = Asian

EU = European

US = United States

UNI = Universal

V = Various

METRIC FEMALE FITTINGS

HFMF56



THREAD	SEAT	MOUNT	HEX	OAL	FITS
M10x1.25	DPS	Clip	14mm	45mm	EU

HFMF57



THREAD	SEAT	MOUNT	HEX	OAL	FITS
M12x1.25	DPS	Clip	19mm	46mm	EU

HFMF58



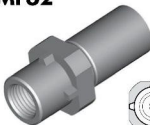
THREAD	SEAT	MOUNT	HEX	OAL	FITS
M10 x 1	DPS	Clip	17mm	54mm	V

HFMF59



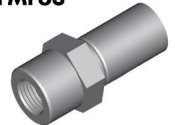
THREAD	SEAT	MOUNT	HEX	OAL	FITS
M10 x 1	DPS	Clip	17mm	38mm	EU

HFMF62



THREAD	SEAT	MOUNT	HEX	OAL	FITS
M10 x 1	DPS	Clip	17mm	39mm	EU

HFMF63



THREAD	SEAT	MOUNT	HEX	OAL	FITS
M10 x 1	DPS	Clip	17mm	39mm	EU

HFMF65



THREAD	SEAT	MOUNT	HEX	OAL	FITS
M10 x 1	DPS	Clip	17mm	39mm	A

HFMF67



THREAD	SEAT	MOUNT	HEX	OAL	FITS
M10 x 1	DPS	Clip	16mm	46mm	US

HFMF71



THREAD	SEAT	MOUNT	HEX	OAL	FITS
M10 x 1	DPS	Clip	17mm	39mm	EU

HFMF73



THREAD	SEAT	MOUNT	HEX	OAL	FITS
M10 x 1	DPS	Clip	17mm	-	US

HFMF74



THREAD	SEAT	MOUNT	HEX	OAL	FITS
M10 x 1	DPS	Clip	17mm	-	US

HFMF96



THREAD	SEAT	MOUNT	HEX	OAL	FITS
M10 x 1	DPS	Clip	58°	38mm	EU

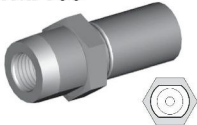
HFMF99

NEW



THREAD	SEAT	MOUNT	HEX	OAL	FITS
M10 x 1	DPS	Clip	17mm	48mm	EU

HFMF100



THREAD	SEAT	MOUNT	HEX	OAL	FITS
M10 x 1	DPS	Clip	17mm	39mm	EU

HFMF305



THREAD	SEAT	MOUNT	HEX	OAL	FITS
M10 x 1	DPS	Clip	15mm	37mm	EU

Clip Mount - DPS Seat

A = Asian

EU = European

US = United States

UNI = Universal

V = Various

METRIC FEMALE FITTINGS

HFMF315



THREAD	SEAT	MOUNT	HEX	OAL	FITS
M10 x 1	DPS	Clip	17mm	36mm	A

HFMF316



THREAD	SEAT	MOUNT	HEX	OAL	FITS
M10 x 1	DPS	Clip	17mm	36mm	A

TO BE DISCONTINUED

HFMF327



THREAD	SEAT	MOUNT	HEX	OAL	FITS
M10 x 1	DPS	Clip	-	39mm	A

HFMF329



THREAD	SEAT	MOUNT	HEX	OAL	FITS
M10 x 1	DPS	Clip	17mm	36mm	A

HFMF340



THREAD	SEAT	MOUNT	HEX	OAL	FITS
M10 x 1	DPS	Clip	15mm	37mm	EU

HFMF363



THREAD	SEAT	MOUNT	HEX	OAL	FITS
M10 x 1	DPS	Clip	-	38mm	EU

HFMF367

NEW



THREAD	SEAT	MOUNT	HEX	OAL	FITS
M10 x 1	DPS	Clip	-	36mm	A

HFMF368

NEW



THREAD	SEAT	MOUNT	HEX	OAL	FITS
M10 x 1	DPS	Clip	17mm	38mm	A

HFMF369

NEW



Left

THREAD	SEAT	MOUNT	HEX	OAL	FITS
M10 x 1	DPS	Clip	17mm	66mm	A

HFMF370

NEW



Right

THREAD	SEAT	MOUNT	HEX	OAL	FITS
M10 x 1	DPS	Clip	17mm	66mm	A

HFMF372

NEW



THREAD	SEAT	MOUNT	HEX	OAL	FITS
M10 x 1	DPS	Clip	17mm	37mm	A

HFMF374

NEW



THREAD	SEAT	MOUNT	HEX	OAL	FITS
M10 x 1	DPS	-	12mm	36mm	A

HFMF375

NEW



THREAD	SEAT	MOUNT	HEX	OAL	FITS
M10 x 1	DPS	Clip	18mm	36mm	A

Clip - DPS Seat

A = Asian

EU = European

US = United States

UNI = Universal

V = Various

METRIC FEMALE FITTINGS

HFMF18



8.5mm Hole

THREAD	SEAT	MOUNT	HOLE	OAL	FITS
M8x1-20	Inverted	Bolted	8.5mm	55mm	A

HFMF30



8.5mm Hole

THREAD	SEAT	MOUNT	HOLE	OAL	FITS
M12x1-10x1	Inverted	Bolted	8.5mm	54mm	A

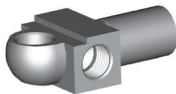
HFMF48



8.75mm Hole

THREAD	SEAT	MOUNT	HOLE	OAL	FITS
M10 x 1	Inverted	Bolted	8.75mm	53mm	A

HFMF50



8/10mm Hole

THREAD	SEAT	MOUNT	HOLE	OAL	FITS
M10x1-20	DPS	Bolted	8/10mm	48mm	US

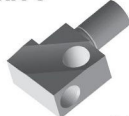
HFMF69



6.4mm Hole

THREAD	SEAT	MOUNT	HOLE	OAL	FITS
M10 x 1	Inverted	Bolted	6.4mm	62mm	A

HFMF79



11.9mm Hole

THREAD	SEAT	MOUNT	HOLE	OAL	FITS
M11 x 1.5 (2)	Inverted	Bolted	-	56mm	US

HFMF322



M8 x 1.25

THREAD	SEAT	MOUNT	HOLE	OAL	FITS
M10 x 1	Inverted	Bolted	M8 x 1.25	42mm	A

HFMF328



M8 x 1.25

THREAD	SEAT	MOUNT	HOLE	OAL	FITS
M10 x 1	DPS	Bolted	M8 x 1.25	46mm	A

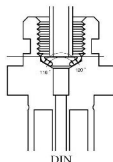
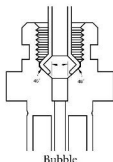
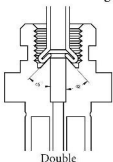
Bolt On Mount

DID YOU KNOW?

There are three different flare types.

1. A 45° double flare – the inverted seat angle is 42°
2. A 45° ISO flare (Bubble) – the female seat angle is 96°
3. A 31° DIN flare (Mushroom) – the female seat angle is 120°

The seat angles vary to the tube angle because it is important to seal the smallest diameter to get an effective seal.



METRIC FEMALE FITTINGS

Bulkhead Mount

HFMFX01



5/8" x 18NF External Thread

THREAD	SEAT	MOUNT	HEX	OAL	FITS
M10 x 1	Inverted	Bulkhead	19mm	45mm	V

HFMFX02



5/8" x 18NF External Thread

THREAD	SEAT	MOUNT	HEX	OAL	FITS
M10 x 1.25	Inverted	Bulkhead	19mm	45mm	V

HFMFX04



5/8" x 18NF External Thread

THREAD	SEAT	MOUNT	HEX	OAL	FITS
M10 x 1	DPS	Bulkhead	19mm	45mm	V

HFMFX04-M16

NEW



M16 x 1.5 External Thread

THREAD	SEAT	MOUNT	HEX	OAL	FITS
M10 x 1	DPS	Bulkhead	17mm	46mm	V

HFMFX10

NEW



M20 x 1.5 External Thread

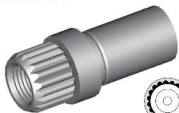
THREAD	SEAT	MOUNT	HEX	OAL	FITS
M12 x 1	DPS	Bulkhead	22mm	49mm	US

DID YOU KNOW?

Most female fittings with a bulkhead mount use a 5/8" x 18NF thread, and this is the only thread that BQ supplies. However some of these fittings come with a M16 x 1.5 or a fine brass thread. If in doubt, supply a BQ13 nut with the fitting.

Spline Mount

HFMF22



THREAD	SEAT	MOUNT	HEX	OAL	FITS
M10 x 1	DPS	Spline	-	39mm	EU

HFMF27



THREAD	SEAT	MOUNT	HEX	OAL	FITS
M10 x 1	DPS	Spline	-	30mm	EU

HFMF373

NEW



THREAD	SEAT	MOUNT	HEX	OAL	FITS
M10 x 1	DPS	-	-	36mm	A

A = Asian

EU = European

US = United States

UNI = Universal

V = Various

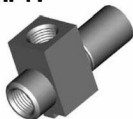
METRIC FEMALE FITTINGS

HFMF40



THREAD	SEAT	MOUNT	HEX	OAL	FITS
M10 x 1	DPS	Bracket	-	42mm	US

HFMF41



THREAD	SEAT	MOUNT	HEX	OAL	FITS
M10x1-G2	DPS	Bracket	-	44mm	US

HFMF70



THREAD	SEAT	MOUNT	HEX	OAL	FITS
M10x1-G2	DPS	Bracket	-	54mm	US

HFMF90



THREAD	SEAT	MOUNT	HEX	OAL	FITS
M10 x 1	DPS	Bracket	-	48mm	US

HFMF311



THREAD	SEAT	MOUNT	HEX	OAL	FITS
M12 x 1	DPS	Bracket	-	55mm	US

HFMF312



THREAD	SEAT	MOUNT	HEX	OAL	FITS
M10 x 1	DPS	Bracket	-	55mm	US

HFMF313



THREAD	SEAT	MOUNT	HEX	OAL	FITS
M12 x 1	DPS	Bracket	-	49mm	US

HFMF317



THREAD	SEAT	MOUNT	HEX	OAL	FITS
M10 x 1-G2	Inverted	Bracket	-	48mm	A

HFMF318



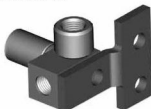
THREAD	SEAT	MOUNT	HEX	OAL	FITS
M10 x 1	Inverted	Bracket	-	115mm	A

HFMF319



THREAD	SEAT	MOUNT	HEX	OAL	FITS
M10 x 1	Inverted	Bracket	-	135mm	A

HFMF320



THREAD	SEAT	MOUNT	HEX	OAL	FITS
M10 x 1-G2	Inverted	Bracket	-	38mm	A

HFMF324



THREAD	SEAT	MOUNT	HEX	OAL	FITS
M10 x 1	Inverted	Bracket	-	46mm	A

HFMF325



THREAD	SEAT	MOUNT	HEX	OAL	FITS
M10 x 1	Inverted	Bracket	-	45mm	A

HFMF326



THREAD	SEAT	MOUNT	HEX	OAL	FITS
M10 x 1	Inverted	Clip	-	34mm	A

HFMF342



THREAD	SEAT	MOUNT	HEX	OAL	FITS
M10 x 1	Inverted	Bracket	-	100mm	A

Bracket Mount

Left

A = Asian

EU = European

US = United States

UNI = Universal

V = Various

METRIC FEMALE FITTINGS

Bracket Mount

HFMF343



Right

THREAD	SEAT	MOUNT	HEX	OAL	FITS
M10 x 1	Inverted	Bracket	-	100mm	A

HFMF364

NEW



Left

THREAD	SEAT	MOUNT	HEX	OAL	FITS
M10 x 1	DPS	Bracket	17mm	115mm	A

HFMF365

NEW



Right

THREAD	SEAT	MOUNT	HEX	OAL	FITS
M10 x 1	DPS	Bracket	17mm	115mm	A

HFMF371

NEW



THREAD	SEAT	MOUNT	HEX	OAL	FITS
M10 x 1	DPS	Bolted	-	-	A

BQ71



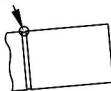
Bracket Retaining Screws (PKT 50)

This thread forming screw is required to secure bracket to bracket mount fittings.

DID YOU KNOW?

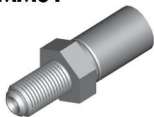
The purpose of the circular groove on the fitting crimp shell is threefold.

1. It helps to differentiate BQ fittings from others.
2. It acts as a depth guide for the hose installation.
3. It is used as a crimp setting guide for the economy crimping systems.



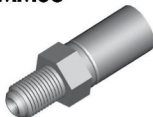
METRIC MALE FITTINGS

HFMM01



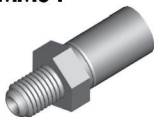
THREAD	THREAD LENGTH	HEX	OAL	FITS
M10 x 1	17mm	16mm	45mm	A

HFMM03



THREAD	THREAD LENGTH	HEX	OAL	FITS
M10 x 1	14mm	14mm	43mm	V

HFMM04



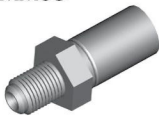
THREAD	THREAD LENGTH	HEX	OAL	FITS
M10 x 1.25	13mm	16mm	41mm	A

HFMM05



THREAD	THREAD LENGTH	HEX	OAL	FITS
M12 x 1	18mm	17mm	47mm	A

HFMM06



THREAD	THREAD LENGTH	HEX	OAL	FITS
M10 x 1	13mm	16mm	41mm	A

HFMM08



THREAD	THREAD LENGTH	HEX	OAL	FITS
M10 x 1	17mm	17mm	78mm	A

HFMM13



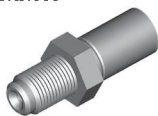
THREAD	THREAD LENGTH	HEX	OAL	FITS
M12 x 1	19mm	16mm	77mm	US

HFMM15



THREAD	THREAD LENGTH	HEX	OAL	FITS
M14 x 1.5	23.5mm	16mm	77mm	US

HFMM17



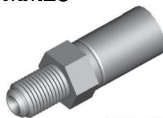
THREAD	THREAD LENGTH	HEX	OAL	FITS
M12 x 1.25	17mm	17mm	45mm	EU

HFMM22



THREAD	THREAD LENGTH	HEX	OAL	FITS
M10 x 1	33mm	14mm	62mm	EU

HFMM23



Left Hand Thread

THREAD	THREAD LENGTH	HEX	OAL	FITS
M10 x 1	14mm	14mm	43mm	EU

HFMM24



THREAD	THREAD LENGTH	HEX	OAL	FITS
M10 x 1.5	13mm	16mm	41mm	EU

HFMM25



THREAD	THREAD LENGTH	HEX	OAL	FITS
M14 x 1	15mm	19mm	43mm	EU

Standard Mount

A = Asian

EU = European

US = United States

UNI = Universal

V = Various

METRIC MALE FITTINGS

HFMM02



THREAD	THREAD LENGTH	HEX	OAL	FITS
M10 x 1	23mm	15mm	51mm	V

HFMM09



THREAD	THREAD LENGTH	HEX	OAL	FITS
M12 x 1	28mm	17mm	56mm	A

HFMM10



THREAD	THREAD LENGTH	HEX	OAL	FITS
M12 x 1.5	35mm	17mm	61mm	A

HFMM11



THREAD	THREAD LENGTH	HEX	OAL	FITS
M10 x 1	15mm	14mm	43mm	EU

HFMM18



THREAD	THREAD LENGTH	HEX	OAL	FITS
M10 x 1	26mm	16mm	56mm	EU

HFMM20



THREAD	THREAD LENGTH	HEX	OAL	FITS
M10 x 1	24mm	14mm	81mm	EU

HFMM21



THREAD	THREAD LENGTH	HEX	OAL	FITS
M10 x 1.25	25mm	14mm	26mm	EU

HFMM12



THREAD	THREAD LENGTH	HEX	OAL	FITS
M10 x 1	15mm	17mm	50mm	V

HFMM302



THREAD	THREAD LENGTH	HEX	OAL	FITS
M10 x 1	14.5mm	17mm	49mm	EU

HFMM303



THREAD	THREAD LENGTH	HEX	OAL	FITS
M10 x 1	16mm	17mm	52mm	EU

Bulkhead Mount

Clip Mount

A = Asian

EU = European

US = United States

UNI = Universal

V = Various

BRACKETS

BQB01



LOCATION	HOLE	FITS
-	9mm	US

BQB04



LOCATION	HOLE	FITS
Either	8.6mm	US

BQB05



LOCATION	HOLE	FITS
-	9mm	US

BQB07



LOCATION	HOLE	FITS
Rear	12.4mm	US

BQB10



LOCATION	HOLE	FITS
Left	9.6mm	US

BQB11



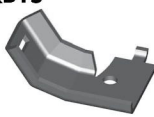
LOCATION	HOLE	FITS
Right	9.6mm	US

BQB14



LOCATION	HOLE	FITS
Left	8.6mm	US

BQB15



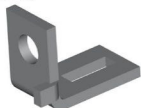
LOCATION	HOLE	FITS
Right	8.6mm	US

BQB20



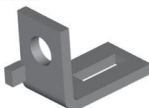
LOCATION	HOLE	FITS
Either	9mm	US

BQB24



LOCATION	HOLE	FITS
Left	8.8mm	US

BQB25



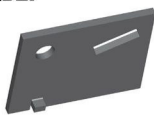
LOCATION	HOLE	FITS
Right	8.8mm	US

BQB26



LOCATION	HOLE	FITS
Right	7mm	US

BQB27



LOCATION	HOLE	FITS
Left	7mm	US

BQB29



LOCATION	HOLE	FITS
Either	9.6mm	US

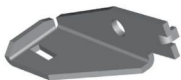
BQB30



LOCATION	HOLE	FITS
Rear	10.4mm	US

BRACKETS

BQB39



LOCATION	HOLE	FITS
Left	9mm	US

BQB40



LOCATION	HOLE	FITS
Right	9mm	US

BQB41



LOCATION	HOLE	FITS
Left	9mm	US

BQB42



LOCATION	HOLE	FITS
Right	9mm	US

BQB50



LOCATION	HOLE	FITS
Either	8mm	US

BQB53



TO BE DISCONTINUED

LOCATION	HOLE	FITS
Right	9mm	US

BQB54



TO BE DISCONTINUED

LOCATION	HOLE	FITS
Left	9mm	US

BQB64



LOCATION	HOLE	FITS
Left	8.3mm	US

BQB65



LOCATION	HOLE	FITS
Right	8.3mm	US

BQB75



LOCATION	HOLE	FITS
Rear	8.5mm	US

BQB80



TO BE DISCONTINUED

LOCATION	HOLE	FITS
Either	8.8mm	US

BQB83



LOCATION	HOLE	FITS
Either	8.8mm	US

BQB86



LOCATION	HOLE	FITS
Left	8.5mm	US

BQB87



LOCATION	HOLE	FITS
Right	8.5mm	US

BQB88



LOCATION	HOLE	FITS
Either	7.7mm	US

BRACKETS

BQB89



LOCATION	HOLE	FITS
Either	10.4mm	US

BQB90



LOCATION	HOLE	FITS
Left	9.0mm	US

BQB91



LOCATION	HOLE	FITS
Right	9.0mm	US

BQB94



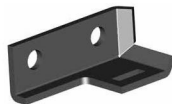
LOCATION	HOLE	FITS
Right	9.0mm	US

BQB105



LOCATION	HOLE	FITS
Either	9mm	US

BQB111



LOCATION	HOLE	FITS
Left	8.8mm	US

BQB112



LOCATION	HOLE	FITS
Right	8.8mm	US

BQB115



LOCATION	HOLE	FITS
Either	3/8 x 16/32	US

BQB118



LOCATION	HOLE	FITS
Either	12mm	US

BQB119



LOCATION	HOLE	FITS
Left	9mm	US

BQB120



LOCATION	HOLE	FITS
Right	9mm	US

BQB151



LOCATION	HOLE	FITS
Right	6.3mm	US

BQB152



LOCATION	HOLE	FITS
Left	6.3mm	US

BQB160



LOCATION	HOLE	FITS
Left	9mm	US

BQB166



LOCATION	HOLE	FITS
Left	9mm	US

BRACKETS

BQB171



LOCATION	HOLE	FITS
Either	8.7mm	US

BQB185

NEW



LOCATION	HOLE	FITS
Right	16.5mm	US

BQB186

NEW



LOCATION	HOLE	FITS
Left	16.5mm	US

BQB312



LOCATION	HOLE	FITS
Left	6.3mm	US

BQB313



LOCATION	HOLE	FITS
Right	6.3mm	US

BQB315

NEW



LOCATION	HOLE	FITS
Left	10mm	US

BQB316

NEW



LOCATION	HOLE	FITS
Right	10mm	US

BQB415

NEW



LOCATION	HOLE	FITS
Either	5/16"	US

Fitting Brackets

BRACKETS

BQB08



LOCATION	HOLE	FITS
Right	8.8mm	US

BQB09



LOCATION	HOLE	FITS
Left	8.8mm	US

BQB12



LOCATION	HOLE	FITS
Left	8.6 x 1	US

BQB16



LOCATION	HOLE	FITS
Left	9mm	US

BQB17



LOCATION	HOLE	FITS
Right	9mm	US

BQB18



LOCATION	HOLE	FITS
Left	9mm	US

BQB19



LOCATION	HOLE	FITS
Right	9mm	US

BQB21



LOCATION	HOLE	FITS
Left	6mm	US

BQB22



LOCATION	HOLE	FITS
Right	6mm	US

BQB23



LOCATION	HOLE	FITS
Either	8.8mm	US

BQB31

(Includes Grommet)



LOCATION	HOLE	FITS
Either	6mm	A

BQB32



LOCATION	HOLE	FITS
Right	6mm	US

BQB34



M6 x 1

LOCATION	HOLE	FITS
Left	M6 x 1	US

BQB35



M6 x 1

LOCATION	HOLE	FITS
Right	M6 x 1	US

BQB36



LOCATION	HOLE	FITS
Left	8.4mm	US

Center Brackets

A = Asian

EU = European

US = United States

UNI = Universal

V = Various

BRACKETS

BQB37



LOCATION	HOLE	FITS
Right	8.6mm	US

BQB38



LOCATION	HOLE	FITS
Either	5/16IN	US

BQB48



LOCATION	HOLE	FITS
Left	6.4mm	US

BQB49



TO BE DISCONTINUED

LOCATION	HOLE	FITS
Right	6.4mm	US

BQB51



TO BE DISCONTINUED

LOCATION	HOLE	FITS
Left	9mm	US

BQB52



LOCATION	HOLE	FITS
Right	9mm	US

BQB69



M8 x 1.25

LOCATION	HOLE	FITS
Either	M8 x 1.25	US

BQB70



LOCATION	HOLE	FITS
Left	9.2mm	US

BQB71



LOCATION	HOLE	FITS
Right	9.2mm	US

BQB72



LOCATION	HOLE	FITS
Left	7mm	US

BQB73



LOCATION	HOLE	FITS
Right	7mm	US

BQB74



LOCATION	HOLE	FITS
Left	8.6mm	US

BQB77



TO BE DISCONTINUED

LOCATION	HOLE	FITS
Left	8.1mm	US

BQB78



LOCATION	HOLE	FITS
Right	8.6mm	US

BQB81



LOCATION	HOLE	FITS
Rear	9.0mm	US

Center Brackets

A = Asian

EU = European

US = United States

UNI = Universal

V = Various

BRACKETS

BQB85



LOCATION	HOLE	FITS
Either	9mm	US

BQB92



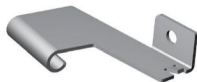
LOCATION	HOLE	FITS
Left	M6 x 1	US

BQB93



LOCATION	HOLE	FITS
Right	M6 x 1	US

BQB98



LOCATION	HOLE	FITS
Right	9mm	US

BQB99



LOCATION	HOLE	FITS
Left	9mm	US

BQB100



LOCATION	HOLE	FITS
Left	9mm	US

BQB101



LOCATION	HOLE	FITS
Right	9mm	US

BQB109



LOCATION	HOLE	FITS
Left	7mm	US

BQB110



LOCATION	HOLE	FITS
Right	7mm	US

BQB140



LOCATION	HOLE	FITS
Right	9mm	US

BQB141



LOCATION	HOLE	FITS
Left	9mm	US

BQB162



LOCATION	HOLE	FITS
Right	6.3mm	US

BQB163



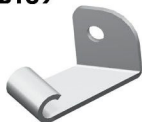
LOCATION	HOLE	FITS
Left	6.3mm	US

BQB168



LOCATION	HOLE	FITS
Either	M6 x 1	US

BQB169



LOCATION	HOLE	FITS
Either	9mm	US

BRACKETS

BQB172



LOCATION	HOLE	FITS
Either	9mm	US

BQB174



(Includes Grommet)

LOCATION	HOLE	FITS
Right	9mm	A

BQB195



(Includes Grommet)

LOCATION	HOLE	FITS
Left	9mm	A

BQB221



(Includes Grommet)

LOCATION	HOLE	FITS
Either	9mm	A

BQB222



(Includes Grommet)

LOCATION	HOLE	FITS
Right	9mm	A

BQB223



(Includes Grommet)

LOCATION	HOLE	FITS
Left	9mm	A

BQB224



(Includes Grommet)

LOCATION	HOLE	FITS
Right	9mm	A

BQB225

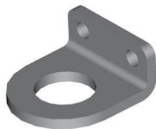


(Includes Grommet)

LOCATION	HOLE	FITS
Left	9mm	A

Center Brackets

BQB06



Universal

A = Asian

EU = European

US = United States

UNI = Universal

V = Various

BRAKE HOSE GROMMETS

BQ203



DIAMETER	OAL	FITS
16mm	104mm	V

BQ210



DIAMETER	OAL	FITS
30mm	10mm	EU

BQ211



DIAMETER	OAL	FITS
18mm	25mm	V

BQ212



DIAMETER	OAL	FITS
22mm	41mm	V

BQ213



DIAMETER	OAL	FITS
30mm	32mm	A

BQ215



DIAMETER	OAL	FITS
25mm	22mm	A

BQ216



DIAMETER	OAL	FITS
28mm	32mm	EU

BQ217



DIAMETER	OAL	FITS
28mm	29mm	EU

BQ218



DIAMETER	OAL	FITS
25mm	16mm	EU

BQ233



NEW

DIAMETER	OAL	FITS
26mm	24mm	EU

BQ234



DIAMETER	OAL	FITS
19mm	34mm	A

BQ272



DIAMETER	OAL	FITS
25.4mm	10mm	EU

BQ273



DIAMETER	OAL	FITS
26mm	8mm	EU

BQ274



DIAMETER	OAL	FITS
18mm	62mm	EU

BQ275



DIAMETER	OAL	FITS
32mm	34mm	EU

A = Asian

EU = European

US = United States

UNI = Universal

V = Various

BRAKE HOSE GROMMETS

BQ276

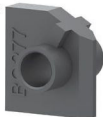
NEW



DIAMETER	OAL	FITS
18.4mm	10mm	EU

BQ277

NEW



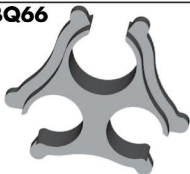
DIAMETER	OAL	FITS
31mm	28mm	EU

BRAKE HOSE PLASTIC CLIPS

BQ65



BQ66



BQ67



BQ68



BQ69



BQ70



BQ97



BQ98



A = Asian

EU = European

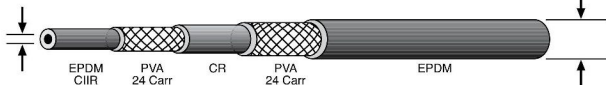
US = United States

UNI = Universal

V = Various

Rubber Brake Hose

BQ101



Hose ID: .130" - .138"
(3.3mm - 3.5mm)

Hose OD: .406" - .421"
(10.3mm - 10.7mm)

- Two braid PVA reinforced hose
- Meets FMVSS-106 and SAE J1401 specifications
- Temperature range -50°C to 121°C
- Compatible with DOT 3, DOT 4 and most non-petroleum based brake fluids including silicone
- Excellent moisture resistance
- Superior weather resistant cover material

(50' Minimum)

BQ11



New and Improved

Stainless

Hose Protector Spring

(PKT 6 - Length 16')

BQ12



Fitting Shoulder Clips

(PKT 20)



Available in 10' increments

Heat Protection Sleeve

Attractive brake hose cover to protect the hose from hot components. Simply slide over hose before crimping end fittings.

BQ71

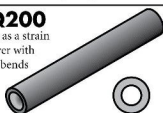


Bracket Retaining Screws

(PKT 50)

BQ200

Used as a strain reliever with tight bends

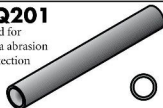


Insulating Hose Thick

(10ft Length)

BQ201

Used for extra abrasion protection



Insulating Hose Thin

(50ft Length)

BQ202



Plastic Protector Spring

(Length = 500mm or 19.5')

BQ204



Nylon Insulation Tube

(100ft Length)

BQ296



Strain Reliever

For rubber brake hoses

PART NO.	COLOR	TEMPERATURE	
		CONSTANT	INTERMITTENT
BQ312-BK	Black	500° F	3,000° F
BQ312-GY	Gray	500° F	3,000° F

Rubber Brake Hose Cutter



BQ2103

Replacement
Blade
BQ2101B

This heavy duty tool cuts hose clean & square every time - with ease. Blade is reversible for double life.

STAINLESS STEEL BRAIDED HOSE & ACCESSORIES

Clear Center Fitting Adaptor Tube

Allows you to adapt center fittings and accessories to non-jacketed hose available in 10' lengths.

BQ310

Allows you to adapt center fittings and accessories to jacketed hose available in 10' lengths.

BQ311



Braided Hose Insert

PART NO.	DESCRIPTION
BQ251-SV	Braided Hose Insert - Silver
BQ251-BK	Braided Hose Insert - Black
BQ251-BL	Braided Hose Insert - Blue
BQ251-RD	Braided Hose Insert - Red
BQ251-PP	Braided Hose Insert - Purple
BQ251-GD	Braided Hose Insert - Gold
BQ251-GR	Braided Hose Insert - Green
BQ251-YL	Braided Hose Insert - Yellow

TOOLS



BQ2104

Small Braided Hose Shears

High grade braided hose shears that cuts the hose clean without fraying the braid. Handy inside stops are ideal for rounding up the hose after cutting.



BQ611

High Speed Skiving Tool

Skive your braided hose in a matter of a few seconds. Adjustable stop allows precise measurement every time. This tool has three actions with one simple squeeze of the handles. The first stage clamps the hose, the second stage brings the knives down and cuts the outer cover, and the final stage rips it off the hose. This high productivity tool will save you a lot of time and heartache and leave you with a professional result.

BQ611B
Replacement Blade

Stainless Steel Braided Brake Hose High Performance

**304 Stainless Braid 4 Wire
Thickness .008" [0.20mm]**

PART NO.	NOM. SIZE (ID)	JACKET COLOR
BQ301	1/8"	NA
BQ303	1/8"	Clear
BQ303BK	1/8"	Black
BQ303BL	1/8"	Blue
BQ303RD	1/8"	Red

ID SIZE	OD SIZE (BRAID)	OD INCLUDING COVER	MAX. WORKING PRESSURE	MIN. BURST PRESSURE	MIN. BEND RADIUS
1/8" (3.4mm)	1/4" (6.35mm)	0.297" (7.50mm)	3300 psi (207 Bar)	12,000psi (812 Bar)	2" (50.80mm)

Temperature Range: +500°F (260°C) to -100°F (-73°C)

Stainless Steel Crimp Fittings

Polished Stainless Steel Fittings

Complete your brake plumbing job with stainless steel fittings for non-rusting durability. Polished finish for the chrome like look.



See these polished Stainless Steel Motorcycle Fittings on page 75.

Stainless Crimp Fittings

PART NO.	DESCRIPTION
HF075S	Fitting - Male Swivel Nut 7/16" x 24NS (45°)
HF095S	Fitting - Female Swivel Nut 3/8" x 24NF (Straight) No. 3AN
HF09WSS	Fitting - Female Swivel Nut 3/8" x 24NF (Straight)
HF105S TBD	Fitting - Female Swivel Nut 3/8" x 24NF (45°) No. 3AN
HF115S	Fitting - Female Swivel Nut 3/8" x 24NF (90°) No. 3AN
HF125S	Fitting - Female Swivel Nut 7/16" x 20NF (Straight) No. 4AN
HF135S	Fitting - Female Swivel Nut 7/16" x 20NF (45°) No. 4AN
HF145S	Fitting - Female Swivel Nut 7/16" x 20NF (90°) No. 4AN
HF155S	Fitting - Male Swivel Nut 7/16" x 24NS
HF165S	Fitting - Male Swivel Nut 3/8" x 24NF
HF175S	Fitting - Male Swivel Nut 3/8" x 24NF (90°)
HF305S	Fitting - 3/16" Compression
HF315S TBD	Fitting - 1/4" Compression
HF335S	Fitting - Male Swivel Nut 3/8" x 24NF (45°)
HFBO95S	Fitting - Banjo 10 x 10mm
HF345S	Fitting - Banjo 10 x 8mm (Extra long Neck)
HF375S	Fitting - Banjo 10 x 10mm (Extra long Neck)
HF1F015S	Fitting - Female 3/8" x 24NF
HF1F025S	Fitting - Female 7/16" x 24NS
HF1F015S TBD	Fitting - Male 3/8" x 24NF Short
HF1F035S	Fitting - Male 7/16" x 20NF Short
HF1F195S	Fitting - Male 1/8" x 27NPT
HF1F045S	Fitting - Female M10 x 1 (17mm Flats)
HF1F065S	Fitting - Male M10 x 1 (Short)

TBD = TO BE DISCONTINUED

BRAIDED HOSE CENTER SUPPORTS

LPC01

NEW



WIDTH/HEX	LENGTH	MOUNT	FITS
17mm	35mm	Clip	V

LPC05

NEW



WIDTH/HEX	LENGTH	MOUNT	FITS
20mm	29mm	Bracket	A

LPC06

NEW



WIDTH/HEX	LENGTH	MOUNT	FITS
17mm	34mm	Clip	A

LPC07

NEW



WIDTH/HEX	LENGTH	MOUNT	FITS
19mm	36mm	Clip	V

LPC09

NEW



WIDTH/HEX	LENGTH	MOUNT	FITS
17mm	34mm	Clip	A

LPC17

NEW



WIDTH/HEX	LENGTH	MOUNT	FITS
16mm	37mm	Clip	US

LPC301

NEW



WIDTH/HEX	LENGTH	MOUNT	FITS
20mm	33mm	Clip	EU

BQ255

NEW



DIAMETER	OAL	FITS
18mm	22mm	V

BQ288

NEW



DIAMETER	OAL	FITS
25mm	17mm	V

BQ289

NEW



DIAMETER	OAL	FITS
19	34mm	A

BQ294

NEW



DIAMETER	OAL	FITS
19mm	40mm	EU

Metal

Rubber

A = Asian

EU = European

US = United States

UNI = Universal

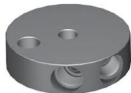
V = Various

MOTORCYCLE FITTINGS



Polished Stainless Steel fittings to suit Harley Davidson Motorcycles

BQ177SS



Stainless

THREAD	FLARE	OAL	FITS
3/8" x 24NF	45°	47mm	US

HF16SS



Stainless

THREAD	FLARE	OAL	FITS
3/8" x 24NF	45°	57mm	V

HF17SS



Stainless

THREAD	FLARE	OAL	FITS
3/8" x 24NF	45°	49mm	V

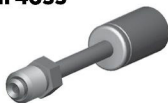
HF33SS



Stainless

THREAD	FLARE	OAL	FITS
3/8" x 24NF	45°	65mm	V

HF43SS



Stainless

THREAD	FLARE	OAL	FITS
3/8" x 24NF	45°	69mm	US

HF45SS



Stainless

THREAD	FLARE	OAL	FITS
3/8" x 24NF	45°	112mm	US

HF46SS



Stainless

THREAD	FLARE	OAL	FITS
3/8" x 24NF	45°	64mm	US

HFB47SS



Stainless

HOLE	THICK	OAL	FITS
12mm	10mm	50mm	US

HFB151SS



Stainless

HOLE	THICK	OAL	FITS
10mm	9mm	-	US

HFB171SS



Stainless

HOLE	THICK	OAL	FITS
10mm	8mm	65mm	US

HFB178SS



HOLE	THICK	OAL	FITS
71/16"	8mm	65mm	US

HFIF126SS



Stainless

THREAD	FLARE	OAL	FITS
3/8" x 24NF	Inverted	31mm	US

A = Asian

EU = European

US = United States

UNI = Universal

V = Various

Power Steering Hose Repair Service Program

Repair failed power steering hoses economically and quickly. Simply re-use the existing end fittings to replace the failed rubber hose utilizing BrakeQuip's uniquely designed crimp fittings.



Power Steering Components - Fittings

PSHF100

Designed to slide onto hose and be lightly crimped.

DESCRIPTION	SIZE	OAL
Center Support for Hose Clamp	-	27mm

PSHF101

DESCRIPTION	SIZE	OAL
Braze-On Fitting	3/8"	44mm

PSHF102

DESCRIPTION	SIZE	OAL
Braze-On Fitting	10mm	44mm

PSHF103

DESCRIPTION	SIZE	OAL
Compression Fitting	3/8"	65mm

PSHF104

DESCRIPTION	SIZE	OAL
Compression Fitting	10mm	65mm

PSHF105

DESCRIPTION	SIZE	OAL
Male Braze-On Fitting	11mm	47mm

PSHF106

To be used in conjunction with BQ226 (3/8") and BQ227 (10mm) braze-on fittings.

DESCRIPTION	SIZE	OAL
Female Swivel	9/16" x 18NPT	37mm

PSHF107

DESCRIPTION	SIZE	OAL
Braze-On Fitting	3/16"	44mm

PSHF108 NEW

DESCRIPTION	SIZE	OAL
Female Inverted Seat	3/16" x 1.5	47mm

PSHF109 NEW

DESCRIPTION	SIZE	OAL
Braze-On Fitting	1/4"	35mm

PSHF111 NEW

DESCRIPTION	SIZE	OAL
Braze-On Fitting	1/2"	44mm

PSHF114

Swivel

DESCRIPTION	SIZE	OAL
90° Female Swivel	9/16" x 18NPT	80mm

POWER STEERING PROGRAM

PSHF115

NEW



Swivel

DESCRIPTION	SIZE	OAL
90° Female Swivel	5/8" - 18NF	80mm

PSHF116

NEW



Swivel

DESCRIPTION	SIZE	OAL
Female Swivel	5/8" - 18NF	57mm

PSHF117

NEW



Swivel

DESCRIPTION	SIZE	OAL
45° Female Swivel	5/8" - 18NF	95mm

PSHF118

NEW



Swivel

DESCRIPTION	SIZE	OAL
Male Swivel	7/16" - 24NS	70mm

PSHF119

NEW



Swivel

DESCRIPTION	SIZE	OAL
Male Swivel	1/2" - 20NF	70mm

PSHF120

NEW



Swivel

DESCRIPTION	SIZE	OAL
Male Swivel	5/8" - 18NF	73mm

PSHF121

NEW



Swivel

DESCRIPTION	SIZE	OAL
45° Male Swivel	7/16" - 24NS	77mm

PSHF122

NEW



Swivel

DESCRIPTION	SIZE	OAL
45° Male Swivel	1/2" - 20NF	81mm

PSHF123

NEW



Swivel

DESCRIPTION	SIZE	OAL
45° Male Swivel	5/8" - 18NF	86mm

PSHF124

NEW



Swivel

DESCRIPTION	SIZE	OAL
90° Male Swivel	7/16" - 24NS	86mm

PSHF125

NEW



Swivel

DESCRIPTION	SIZE	OAL
90° Male Swivel	1/2" - 20NF	75mm

PSHF126

NEW



Swivel

DESCRIPTION	SIZE	OAL
90° Male Swivel	5/8" - 18NF	80mm

POWER STEERING PROGRAM

Power Steering Components - Hoses

High Pressure



BQ330

ID SIZE	OD SIZE	WORKING PRESSURE	MIN. BURST PRESSURE	MIN. BEND RADIUS
3/8"	18mm	1,639 psi	8,200 psi	3-1/4"

Temperature Range: -40°F to +275°F (-40°C to +135°C)

This hose has a high temperature rating and is compatible with most power steering oils. High expansion for noise resistance. Complies with SAE J2050 standards.

Low Pressure



BQ331

ID SIZE	OD SIZE	WORKING PRESSURE	MIN. BURST PRESSURE	MIN. BEND RADIUS
3/8"	16,2mm	300psi	1,200 psi	3"

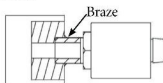
Temperature Range: -40°F to +300°F (-40°C to +150°C)

This hose has a high temperature rating and is compatible with most power steering oils. Fabric cover to distinguish it and for flexibility. Complies with SAE J1019 standards.

Power Steering Hose Fabrication Instructions

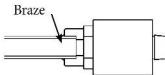
Fitting Selection

Male Lifesaver – PSHF105 – Designed for when you need to reuse a non-tube style fitting. The fitting to be reused will need to be countersunk between 1/8" to 3/16" (3 - 5mm) deep with a 11mm or 7/16" drill.



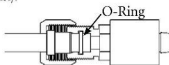
Female Lifesavers – PSHF101 (3/8") and PSHF102 (10mm) – designed for when you don't have enough room to use a compression fitting. These fittings are already countersunk. It is just a matter of cutting the existing tube at the maximum length possible and installing it into the appropriately selected fitting and brazing the tube to the fitting.

IMPORTANT: The brazing process must take place before crimping the fitting.



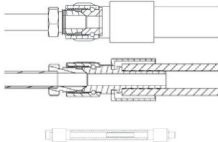
Note: It is important that only high pressure silver brazing rods be used. The silver content of the brazing rod must be at least 45%.

Compression Fittings – PSHF103 (3/8") & PSHF104 (10mm) – Designed for when you have sufficient straight tube to get a good seal on these types of fittings. See illustration below for correct assembly.

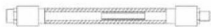


Note: It is important that the cut tube is deburred with a slight outside chamfer so that it doesn't damage the sealing O-Ring. Make sure that the tube goes past the O-Ring and bottoms out at the bottom of the fitting.

Swivel Fitting – PSHF106 – Designed for an easier installation and flexible orientation. Simply braze a BQ226 (3/8" tube) or a BQ227 (10mm tube) fitting onto the end of the cut tube. This will then give you a male connection to attach to the No. 6 JIC female swivel fitting.



Restrictor Tube – BQ801 – This is used only where applicable. Insert restrictor tube into hose before installing last end fitting. This special high temperature tube will "float" in the hose and restrict flow to reduce noise.



POWER STEERING PROGRAM

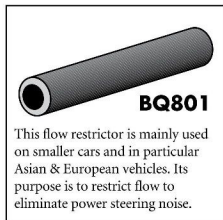
Power Steering Components - Accessories



Crimp Setting Tools
For power steering hoses.



Power Steering Adaptor Kit



Flow Restrictor
This flow restrictor is mainly used on smaller cars and in particular Asian & European vehicles. Its purpose is to restrict flow to eliminate power steering noise.

Power Steering Die Sets Available



PART NO.	CRIMPING MACHINE
BQ2090	BrakeCrimp BQ2090 series
BQ2300	Aerospip 1380
BQ2301	Aerospip 1330
BQ2302	XRP
BQ2303	Custom Crimp D100
BQ2304	Custom Crimp D200
BQ2305	Custom CC30 - Finnpower P20
BQ2306	Custom CC30 - Finnpower P52 - GT40
BQ2307	Darco NP60
BQ2308	Gates 707
BQ2309	Gates GC32
BQ2310	Imperial Eastman K24
BQ2311	Manuli - Technadex
BQ2312	Parker
BQ2313	Weatherhead T400
BQ2314	UniFlex 239
BQ2335	O + P 70
BQ2336	O + P 120



Steel Braze-On Adaptors

PART NO.	THREAD - STEEL - NO. 6 JIC	TUBE SIZE
BQ226	9/16"x18NF	3/8"
BQ227	9/16"x18NF	10mm
BQ228	9/16"x18NF	1/2"

Aluminum Braze-On Adaptor

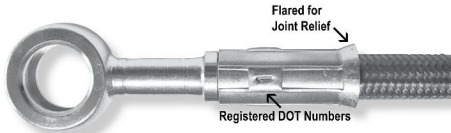
PART NO.	THREAD - STEEL - NO. 6 JIC	TUBE SIZE
BQ170	9/16"x18NF	3/8"

LOW PROFILE FITTINGS

REAL DOT Conformance with the Extreme Look



"Mix and Match System"
allows you to consolidate your inventory.



LP01-3

NEW



THREAD	FLARE	TUBE SIZE	OAL	FITS
-	-	3/16"	32mm	UNI

LP01-4

NEW



THREAD	FLARE	TUBE SIZE	OAL	FITS
-	-	1/4"	32mm	UNI

LP02

NEW



THREAD	FLARE	TUBE SIZE	OAL	FITS
-	-	3/16"	105mm	UNI

LP03

NEW



THREAD	FLARE	TUBE SIZE	OAL	FITS
-	-	1/4"	105mm	UNI

LP06-7



90° Swivel

THREAD	FLARE	TUBE SIZE	OAL	FITS
7/16" x 24NS	45° Double	1/4"	-	V

LP09W-6

NEW



Swivel

THREAD	FLARE	TUBE SIZE	OAL	FITS
3/8" x 24NF	37°	-	-	V

LP10W-6

NEW



45° Swivel

THREAD	FLARE	TUBE SIZE	OAL	FITS
3/8" x 24NF	37°	-	-	V

LP11-6



90° Swivel
No. 3 IIC

THREAD	FLARE	TUBE SIZE	OAL	FITS
3/8" x 24NF	37° Double	3/16"	-	V

LP11W-6

NEW



90° Swivel

THREAD	FLARE	TUBE SIZE	OAL	FITS
3/8" x 24NF	37°	-	-	V

LP12W-7

NEW



Swivel

THREAD	FLARE	TUBE SIZE	OAL	FITS
7/16" x 20NF	37°	-	-	V

LP13W-7

NEW



45° Swivel

THREAD	FLARE	TUBE SIZE	OAL	FITS
7/16" x 20NF	37°	-	-	V

LOW PROFILE FITTINGS

LP14W-7

NEW



90° Swivel

THREAD	FLARE	TUBE SIZE	OAL	FITS
7/16" x 20NF	37°	-	-	V

LP16-6



Male Swivel

THREAD	FLARE	TUBE SIZE	OAL	FITS
3/8" x 24NF	45° Double	3/16"	-	V

LP17-6



90° Swivel

THREAD	FLARE	TUBE SIZE	OAL	FITS
3/8" x 24NF	45° Double	3/16"	-	V

LP33-6



45° Male Swivel

THREAD	FLARE	TUBE SIZE	OAL	FITS
3/8" x 24NF	45° Double	3/16"	-	V

LP34-M10X1

NEW



Male Swivel

THREAD	FLARE	TUBE SIZE	OAL	FITS
M10 x 1	45° Double	3/16"	-	V

LP45-6

NEW



35° Male Swivel

THREAD	FLARE	TUBE SIZE	OAL	FITS
3/8" x 24NF	45° Double	3/16"	90mm	V

LP46-6

NEW



90° Male Swivel

THREAD	FLARE	TUBE SIZE	OAL	FITS
3/8" x 24NF	45° Double	3/16"	90mm	V

LP82-10X1

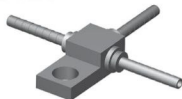
NEW



Male Swivel

THREAD	FLARE	TUBE SIZE	OAL	FITS
M10 x 1	DIN	3/16"	-	V

LP124



8mm Mount Hole

THREAD	FLARE	TUBE SIZE	OAL	FITS
-	-	-	-	V

LP145-10X125

NEW



Male Swivel

THREAD	FLARE	TUBE SIZE	OAL	FITS
M10 x 1.25	45° Double	3/16"	-	V

Miscellaneous

LOW PROFILE FITTINGS

LPB01-10M



HOLE	THICK	WIDTH	ANGLE	OAL	FITS
10mm	8mm	17mm	-	-	V

LPB01-45-10M (NEW)



HOLE	THICK	WIDTH	ANGLE	OAL	FITS
10mm	8mm	17mm	45°	-	V

LPB01-75-10M (NEW)



HOLE	THICK	WIDTH	ANGLE	OAL	FITS
10mm	8mm	17mm	75°	-	V

LPB01-90-10M

(NEW)



HOLE	THICK	WIDTH	ANGLE	OAL	FITS
10mm	8mm	17mm	90°	-	V

LPB09-10M



HOLE	THICK	WIDTH	ANGLE	OAL	FITS
10mm	10mm	18mm	-	-	V

LPB09-45-10M (NEW)



HOLE	THICK	WIDTH	ANGLE	OAL	FITS
10mm	10mm	18mm	45°	-	V

LPB09-75-10M (NEW)



HOLE	THICK	WIDTH	ANGLE	OAL	FITS
10mm	10mm	18mm	75°	-	V

LPB09-90-10M (NEW)



HOLE	THICK	WIDTH	ANGLE	OAL	FITS
10mm	10mm	18mm	90°	-	V

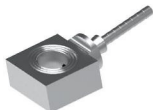
LPB09SW-10M



Swiveling
Banjo with Shell Assembly

HOLE	THICK	WIDTH	ANGLE	OAL	FITS
10mm	10mm	18mm	-	-	V

LPB12-10M



HOLE	THICK	WIDTH	ANGLE	OAL	FITS
10mm	11.5mm	20mm	10°	-	V

LPB47-12M



HOLE	THICK	WIDTH	ANGLE	OAL	FITS
12mm	10mm	19mm	-	-	V

LPB171-10M

(NEW)



HOLE	THICK	WIDTH	ANGLE	OAL	FITS
10mm	8mm	18mm	45°	-	US

LPB178-7

(NEW)



HOLE	THICK	WIDTH	ANGLE	OAL	FITS
7/16"	8mm	20mm	45°	-	US

LPB448-7



HOLE	THICK	WIDTH	ANGLE	OAL	FITS
7/16"	10mm	19mm	-	-	V

LPB455-10M



HOLE	THICK	WIDTH	ANGLE	OAL	FITS
10mm	8mm	17mm	-	-	V

LOW PROFILE FITTINGS

LPIF01-6



THREAD	SEAT	MOUNT	HEX	OAL	FITS
3/8" x 24NF	-	Clip	17mm	-	V

LPIF02-7



THREAD	SEAT	MOUNT	HEX	OAL	FITS
7/16" x 24NS	-	Clip	17mm	-	V

LPIF126-6

NEW



THREAD	SEAT	MOUNT	HEX	OAL	FITS
3/8" x 24NF	Inverted	Clip	8mm	-	US

Female Imperial

LPIM01-6



THREAD	THREAD LENGTH	HEX	OAL	FITS
3/8" x 24NF	12.5mm	16mm	-	V

LPIM02-6



THREAD	THREAD LENGTH	HEX	OAL	FITS
3/8" x 24NF	26mm	16mm	-	V

LPIM03-7



THREAD	THREAD LENGTH	HEX	OAL	FITS
7/16" x 20NF	12mm	16mm	-	V

LPIM13-7



THREAD	THREAD LENGTH	HEX	OAL	FITS
7/16" x 24NS	12mm	16mm	-	V

LPIM19



THREAD	THREAD LENGTH	HEX	OAL	FITS
1/8" x 27NPT	12mm	16mm	-	V

LPIM28-6

NEW



THREAD	THREAD LENGTH	HEX	OAL	FITS
3/8" x 24NF	8mm	11mm	6mm	V

Male Imperial

LPIM29-7

NEW



THREAD	THREAD LENGTH	HEX	OAL	FITS
7/16" x 20NF	8mm	13mm	47mm	V

LOW PROFILE FITTINGS

Female Metric

LPMF01-M10X1



THREAD	SEAT	MOUNT	HEX	OAL	FITS
M10 x 1	-	Clip	17mm	-	V

LPMF02-M10X1



THREAD	SEAT	MOUNT	HEX	OAL	FITS
M10 x 1	-	Clip	17mm	-	A

LPMF05-M10X1



THREAD	SEAT	MOUNT	HEX	OAL	FITS
M10 x 1	-	Clip	14mm	-	EU

LPMF08-M10X1



THREAD	SEAT	MOUNT	HEX	OAL	FITS
M10 x 1	-	Clip	17mm	-	V

LPMF09-M10X125



THREAD	SEAT	MOUNT	HEX	OAL	FITS
M10 x 1.25	-	Clip	17mm	-	V

LPMF322-M10X1



THREAD	SEAT	MOUNT	HEX	OAL	FITS
M10 x 1	Inverted	Bolt	-	-	A

M8 x 1.25

Male Metric

LPM01-M10X1



THREAD	THREAD LENGTH	HEX	OAL	FITS
M10 x 1	17mm	16mm	-	A

LPM02-M10X1



THREAD	THREAD LENGTH	HEX	OAL	FITS
M10 x 1	23mm	15mm	-	V

LPM03-M10X1



THREAD	THREAD LENGTH	HEX	OAL	FITS
M10 x 1	14mm	14mm	-	V

LPM04-M10X125



THREAD	THREAD LENGTH	HEX	OAL	FITS
M10 x 1.25	13mm	16mm	-	A

LPM06-M10X1



THREAD	THREAD LENGTH	HEX	OAL	FITS
M10 x 1	13mm	16mm	-	A

A = Asian

EU = European

US = United States

UNI = Universal

V = Various

LOW PROFILE FITTINGS

LPS-LI-SAE



SEAT	SEAT ANGLE	COLOR
Inverted	45°	Gold

LPS-SD-DIN



SEAT	SEAT ANGLE	COLOR
DPS	DIN 120°	Silver

LPS-SD-JIC



SEAT	SEAT ANGLE	COLOR
DPS	37°	Black

LPS-SD-SAE



SEAT	SEAT ANGLE	COLOR
DPS	45°	Gold

LPS-SI-JIC



SEAT	SEAT ANGLE	COLOR
Inverted	37°	Black

LPS-SI-SAE



SEAT	SEAT ANGLE	COLOR
Inverted	45°	Gold

LPS-T-DIN



SEAT	SEAT ANGLE	COLOR
Dual - DIN	-	Silver

LPS-T-JIC



SEAT	SEAT ANGLE	COLOR
Dual	37°	Black

LPS-T-SAE



SEAT	SEAT ANGLE	COLOR
Dual	45°	Gold

LP121



MATERIAL	OL
Steel	20mm

Seat Stems

Crimp Shell

LOW PROFILE FITTINGS

LP121SS

NEW



MATERIAL	OL
Stainless Steel	20mm

LP16-6SS



Male Swivel
Stainless Steel

THREAD	FLARE	TUBE SIZE	OAL	FITS
3/8" x 24NF	45° Double	3/16"	-	V

LP17-6SS



90° Male Swivel
Stainless Steel

THREAD	FLARE	TUBE SIZE	OAL	FITS
3/8" x 24NF	45° Double	3/16"	-	V

LP33-6SS

NEW



45° Male Swivel
Stainless Steel

THREAD	FLARE	TUBE SIZE	OAL	FITS
3/8" x 24NF	45° Double	3/16"	-	V

LPB01-10MSS

NEW



Stainless Steel

HOLE	THICK	WIDTH	ANGLE	OAL	FITS
10mm	8mm	17mm	-	-	V

LPB09-10MSS

NEW



Stainless Steel

HOLE	THICK	WIDTH	ANGLE	OAL	FITS
10mm	10mm	10mm	-	-	V

LPB448-7SS

NEW



Stainless Steel

HOLE	THICK	WIDTH	ANGLE	OAL	FITS
7/16"	10mm	19mm	-	-	V

LP1F01-6SS

NEW



Stainless Steel

THREAD	SEAT	MOUNT	HEX	OAL	FITS
3/8" x 24NF	-	Clip	17mm	-	V

LPMF01-M10X1SS

NEW



Stainless Steel

THREAD	SEAT	MOUNT	HEX	OAL	FITS
M10x1	-	Clip	17mm	-	V

Stainless Steel

LOW PROFILE FITTINGS

LP09W-6C

(NEW)



Swivel
Chrome

THREAD	FLARE	TUBE SIZE	OAL	FITS
3/8" x 24NF	37°	-	-	V

LP10W-6C

(NEW)



Swivel
Chrome

THREAD	FLARE	TUBE SIZE	OAL	FITS
3/8" x 24NF	37°	-	-	V

LP11W-6C

(NEW)



Swivel
Chrome

THREAD	FLARE	TUBE SIZE	OAL	FITS
3/8" x 24NF	37°	-	-	V

LP12W-7C

(NEW)



Swivel
Chrome

THREAD	FLARE	TUBE SIZE	OAL	FITS
7/16" x 20NF	37°	-	-	V

LP13W-7C

(NEW)



Swivel
Chrome

THREAD	FLARE	TUBE SIZE	OAL	FITS
7/16" x 20NF	37°	-	-	V

LP14W-7C

(NEW)



Swivel
Chrome

THREAD	FLARE	TUBE SIZE	OAL	FITS
7/16" x 20NF	37°	-	-	V

LP16-6C



Male Swivel
Chrome

THREAD	FLARE	TUBE SIZE	OAL	FITS
3/8" x 24NF	45° Double	3/16"	-	V

LP17-6C



90° Male Swivel
Chrome

THREAD	FLARE	TUBE SIZE	OAL	FITS
3/8" x 24NF	45° Double	3/16"	-	V

LP33-6C

(NEW)



45° Male Swivel
Chrome

THREAD	FLARE	TUBE SIZE	OAL	FITS
3/8" x 24NF	45° Double	3/16"	-	V

LP45-6C

(NEW)



35° Male Swivel
Chrome

THREAD	FLARE	TUBE SIZE	OAL	FITS
3/8" x 24NF	45° Double	3/16"	90mm	V

LP46-6C

(NEW)



90° Male Swivel
Chrome

THREAD	FLARE	TUBE SIZE	OAL	FITS
3/8" x 24NF	45° Double	3/16"	90mm	V

LPB01-10MC

(NEW)



Chrome

HOLE	THICK	WIDTH	ANGLE	OAL	FITS
10mm	8mm	17mm	-	-	V

LPB09-10MC

(NEW)



Chrome

HOLE	THICK	WIDTH	ANGLE	OAL	FITS
10mm	10mm	16mm	-	-	V

LPB171-10MC

(NEW)



Chrome

HOLE	THICK	WIDTH	ANGLE	OAL	FITS
10mm	8mm	18mm	45°	-	V

LPB178-7C

(NEW)



Chrome

HOLE	THICK	WIDTH	ANGLE	OAL	FITS
7/16"	8mm	20mm	45°	-	V

Chrome

A = Asian

EU = European

US = United States

UNI = Universal

V = Various

LOW PROFILE FITTINGS

Chrome

LPB448-7C

NEW



Chrome

HOLE	THICK	WIDTH	ANGLE	OAL	FITS
7/16"	10mm	19mm	-	-	V

LPIF01-6C

NEW



Chrome

THREAD	SEAT	MOUNT	HEX	OAL	FITS
3/8" x 24NF	-	Clip	17mm	-	V

LPIF126-6C

NEW



Chrome

THREAD	SEAT	MOUNT	HEX	OAL	FITS
3/8" x 24NF	Inverted	Clip	8mm	-	US

Anodized

LPMF01-M10X1C

NEW



Chrome

THREAD	SEAT	MOUNT	HEX	OAL	FITS
M10 x 1	-	Clip	17mm	-	V

LPB01-10MARD

NEW



Anodized Red

HOLE	THICK	WIDTH	ANGLE	OAL	FITS
10mm	8mm	17mm	-	-	V

LPB01-10MABL

NEW



Anodized Blue

HOLE	THICK	WIDTH	ANGLE	OAL	FITS
10mm	8mm	17mm	-	-	V

LPB01-10MABK

NEW

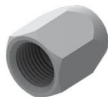


Anodized Black

HOLE	THICK	WIDTH	ANGLE	OAL	FITS
10mm	8mm	17mm	-	-	V

Special Tube Nuts

BQ9150



THREAD	INTERNAL	OAL
7/16" x 20 NF	6.4mm	16mm

BQ9151



THREAD	INTERNAL	OAL
3/8" x 24 NF	6.4mm	16mm

Promotional

BQ728A

NEW



Promotional
Bottle Opener

MATERIAL	COLOR	OAL
Aluminum	Red	59mm

BQ728B

NEW



Promotional
Bottle Opener

MATERIAL	COLOR	OAL
Aluminum	Red	33mm

A = Asian

EU = European

US = United States

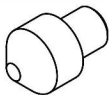
UNI = Universal

V = Various

SYSTEM AIDS & ACCESSORIES

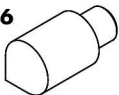
Test Cones

BQ21



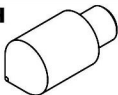
BQ21 Test Cone is designed as an aid for testing banjo fittings.

BQ206



BQ206 and BQ206H are universal Test Cones for doing most general applications.

BQ206H

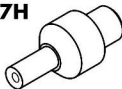


BQ207



BQ207 and BQ207H Test Cones are designed for testing female fittings with inverted seats.

BQ207H



BQ206S

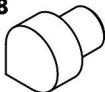


BQ206HS



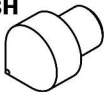
BQ206S and BQ206HS Test Cones are designed for testing female swivel fittings and female fittings with a drill point seat (DPS).

BQ208



BQ208 and BQ208H Test Cone are designed for testing extra long fittings.

BQ208H



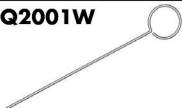
System Aids

BQ23



Fitting Test Spade

BQ2001W



Constriction Gauge

BQ1021A



Rear Crimp Setting Tool

BQ2008



Pro System
Crimp Setting Tool

BQ2010



Special

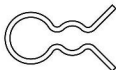
Countersink Drill Bit

BQ37



Econo System
Crimp Setting Spade

BQ1014



Econo System
Crimp Setting Clip

BQ1020



Banjo Blocking-Off Tool

A professional tool for blocking-off banjo fittings. Ideal for blocking off brake hoses with banjo fittings during maintenance & trouble shooting. Copper Washer sealing surfaces allows for sealing high pressures. Easy to use & reliable. Fits banjos holes 3/8" to 5/8".

Use lubrication on O-Rings.

Fitting Plugs

The ideal fitting for blanking off high pressure fluid ports. Fitting design has a universal seat so no sealing compounds necessary.

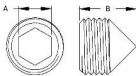
FEATURES:

- Zinc plated for corrosion resistance
- Imperial & Metric Threads

Assortment kit available.

To order see Part No.

BQ7012.



PART NO.	DESCRIPTION	THREAD	A	B
BQ18	Male Plug	M10 x 1	5mm	10mm
BQ19	Male Plug	3/8" x 20NF	3/16"	10mm
BQ26	Male Plug	7/16" x 24NS	1/4"	11mm
BQ160	Female Plug	3/8" x 24NF	1/2"	15mm
BQ161	Female Plug	7/16" x 24NS	9/16"	15mm
BQ162	Female Plug	7/16" x 20NF	9/16"	15mm
BQ163	Female Plug	1/2" x 20NF	16mm	16mm
BQ164	Female Plug	M10 x 1	13mm	15mm
BQ165	Female Plug	M10 x 1.25	13mm	15mm
BQ166	Female Plug	M12 x 1	16mm	16mm
BQ167	Female Plug	M12 x 1.5	16mm	16mm

BQ35



Calibration Tool

Please call for instruction if Potentiometer is out of adjustment. For BQ1005 series machine.

BQ1022



Fitting Pressure Test Adaptor

Ideal for pre-testing reworked fittings.

BQ22A



*Part A - Banjo Bending Bar

BQ22B



Part B - Banjo Holder

BQ22C



*Banjo Bending Bar - LP

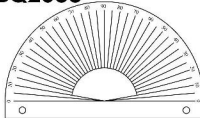
*Use in conjunction with BQ22B.

BQ2110



Crimp Setting Tool - LP

BQ2033



Angle Gauge

Can be bench mounted. Ideal for aligning tubes and fittings.



BQ1150
Grease Gun



BQ1415
Grease Gun Adaptor

This grease gun setup is designed for lubricating the BQ1005 series machine.

BQ2696-R3

NEW

Hose Assembly Lubricant

If you want less effort when installing the fitting into the hose or sick of constriction problems - this is the answer for you.



EDUCATIONAL INFORMATION

Identifying the Correct Thread

THREAD FACTS

Worldwide there are only two measuring systems - Metric and Imperial. Sometimes the imperial measurement is called SAE or American.

Metric systems measure the thread by the distance between two thread pitches expressed in millimeters. Example: M10 x 1 = The OD of the thread is 10mm and the distance between each thread pitch is 1mm. Imperial systems measure the number of thread pitches over a one inch length.

Example: 7/16" x 24NS = The OD of the thread is 7/16" and the number of thread pitches over a one inch length is 24.

After some experience of looking at threads and knowing what vehicle the fitting came from, you will be able to determine fitting threads by just looking at them.

Determining if the thread is Metric or Imperial

The easiest way is using a thread gauge. We offer a thread identification kit (BQ2100) for this purpose that covers the majority of threads you will encounter working with brake plumbing. Another method could be to use a brake hose fitting or tube nut from which you could confirm the thread and size.

1. Determining the fitting OD

- a. If a male fitting - Measure the OD of the thread. Take into account that this measurement will be slightly under the nominal size.
- b. If a female fitting - Measure the ID of the thread. Compare this measurement at the distance between the "valleys" of opposing pitches with corresponding male fittings.

2. Determining the thread pitch

- a. If it is an imperial size - Count the number of thread pitches over, say, 1/2" length and then multiply by 2 to get your T.P.I. (Threads Per Inch).

A GLOBAL GUIDE TO THREAD SELECTION

European (excluding UK)	99% Metric
Asian	99% Metric
UK (1930 - 1976)	Imperial
UK (1976-2008)	Metric
USA (1930 - 1980)	Imperial
USA (1980 - 2008)	Metric & Imperial

- b. If it is a metric size - Measure the distance between two thread pitches to determine the thread pitch.

Imperial threads found on braking systems

3/8" x 24NF 7/16" x 24NS 9/16" x 20NS
 3/8" x 20BSF 1/2" x 20NF
 7/16" x 20NF 9/16" x 18NF

Metric threads found on braking systems

M9 x 1 M10 x 1.5 M12 x 1.25
 M10 x 1 M11 x 1.25 M12 x 1.5
 M10 x 1.25 M12 x 1 M14 x 1.5

80% of threads found on braking systems are:

3/8" x 24NF
 7/16" x 24NS
 M10 x 1

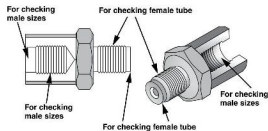
The two sizes most confused because they are so close in dimension are:

- a. 3/8" & 10mm. A 3/8" x 24NF thread will screw in to a M10x1 but a M10x1 will not start into a 3/8" thread. If uncertain, always go for the M10x1 to see if it will start in the thread.
- b. 7/16" & 11mm. The 11mm thread is extremely rare so always going for the 7/16" thread first is a safe bet.

NOTE

It is possible to have metric on one end and imperial on the other end of the hose.

The metric pitch is the same for all sizes, so if you don't have the exact one you want, you can determine this pitch by selecting a different size metric gauge.



ABBREVIATIONS

NF = National Fine
 NS = National Special
 BSF = British Standard Fine

TIPS ON USING THE BQ2100 THREAD GAUGE

Gauges are organized into popularity groups:
 Blue = Most popular Metric threads
 Red = Most popular Imperial threads
 Gold = Less popular Metric threads
 Green = Less popular Imperial threads

EDUCATIONAL INFORMATION

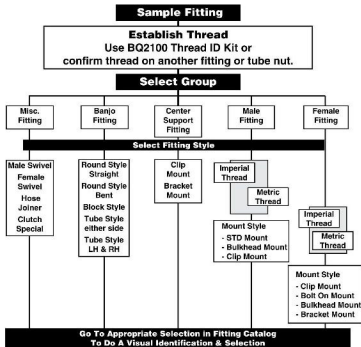
Identify Fittings in 60 Seconds or Less

One of the biggest time wasters is time spent identifying the fittings. BrakeQuip has designed a system around the fitting catalog so that you can identify a fitting in seconds once you have identified the thread, if applicable. The first thing you need to do is understand the fitting numbering system.

For crimp style fittings, BrakeQuip has 9 different product groups and all start with HF (Hose Fitting). Usually if it is not a crimp fitting, the part number will start with BQ (BrakeQuip).

Follow these steps for numbering this quick find process:

1. Decide which fitting group the fitting falls under.
2. Select the fitting style or the way it is mounted. Use the Fitting Catalog contents section at the front of the catalog until you get familiar with catalog.
3. This narrows your search down to a couple of pages or less. Identify what is unique about the fitting and focus on this point in the Catalog.
4. Confirm your selection by checking that all the important attributes match the fitting you are seeking.



Note: To search electronically - go to www.brakequip.com - products - brake hose fittings.

Hose Fitting Numbering System

HF = Hose Fitting (These two letters are used for computer number finding only.)
Fittings that don't fall into one of the categories below have the prefix IIF only.

NOTE:

Not all fittings look the same as the original but will still function properly. The three important points that you need to consider are:

- A. Can the fitting be secured properly? Is there a mount or shoulder profile that will clash?
- B. Will the working end at the connection match up and seal?
- C. Does the hose need something to direct it away from rubbing or heat?

Understanding The Code

ABBREVIATION	DESCRIPTION
HF	Miscellaneous
IM	Imperial Male
MM	Metric Male
IF	Imperial Female
MF	Metric Female
B	Banjo
C	Center Support
IFX	Imperial Female external thread mount
MFX	Metric Female external thread mount

NOTE: Imperial = American Standard

A = Asian

EU = European

US = United States

UNI = Universal

V = Various

PREFIX	DESCRIPTION	EXAMPLE
HF01 - HF__	Hose Fittings of a Miscellaneous Nature	
HFIM01 - HFIM__	Male Fittings (Imperial Thread)	
HFMM01 - HFMM__	Male Fittings (Metric Thread)	
HFIF01 - HFIF__	Female Fittings (Imperial Thread)	
HFMF01 - HFMF__	Female Fittings (Metric Thread)	
HFB01 - HFB__	Banjo Fittings	
HFC01 - HFC__	Center Support Fittings	
HFIFX01 - HFIFX__	Female Imperial Thread (External Thread)	
HFMFX01 - HFMFX__	Female Metric Thread (External Thread)	
BQ	Any items that are not a crimpable hose fitting	

METRIC CONVERSION TABLE

FRACTION (IN.)	DECIMAL (IN.)	METRIC (MM)
1/32	0.031	0.79
1/16	0.063	1.59
3/32	0.094	2.38
1/8	0.125	3.17
5/32	0.156	3.97
3/16	0.188	4.76
7/32	0.219	5.56
1/4	0.25	6.35
9/32	0.281	7.14
5/16	0.313	7.94
11/32	0.344	8.73
3/8	0.375	9.52
13/32	0.406	10.32
7/16	0.438	11.11
15/32	0.469	11.91
1/2	0.5	12.70
17/32	0.531	13.49
9/16	0.563	14.29
19/32	0.594	15.08
5/8	0.625	15.88
21/32	0.656	16.67
11/16	0.688	17.46
23/32	0.719	18.26
3/4	0.75	19.05
25/32	0.781	19.84
13/16	0.813	20.64
27/32	0.844	21.43
7/8	0.875	22.22
29/32	0.906	23.02
15/16	0.938	23.81
31/32	0.969	24.61
1	1.0	25.40
1-1/32	1.031	26.19
1-1/16	1.063	26.99
1-3/32	1.094	27.78
1-1/8	1.125	28.57
1-5/32	1.156	29.37
1-3/16	1.188	30.16
1-7/32	1.219	30.96
1-1/4	1.25	31.75
1-9/32	1.281	32.54
1-5/16	1.313	33.34
1-11/32	1.344	34.13
1-3/8	1.375	34.93
1-13/32	1.406	35.72
1-7/16	1.438	36.51
1-15/32	1.469	37.31
1-1/2	1.5	38.10
1-17/32	1.531	38.89
1-9/16	1.563	39.69
1-19/32	1.594	40.48
1-5/8	1.625	41.28
1-21/32	1.656	42.07
1-11/16	1.688	42.86
1-23/32	1.719	43.66
1-3/4	1.75	44.45
1-25/32	1.781	45.24
1-13/16	1.813	46.04
1-27/32	1.844	46.83
1-7/8	1.875	47.62
1-29/32	1.906	48.42
1-15/16	1.938	49.21
1-31/32	1.969	50.01
2	2.0	50.80

FRACTION (IN.)	DECIMAL (IN.)	METRIC (MM)
2-1/32	2.031	51.59
2-1/16	2.063	52.39
2-3/32	2.094	53.18
2-1/8	2.125	53.98
2-5/32	2.156	54.77
2-3/16	2.188	55.56
2-7/32	2.219	56.36
2-1/4	2.25	57.15
2-9/32	2.281	57.94
2-5/16	2.313	58.74
2-11/32	2.344	59.53
2-3/8	2.375	60.32
2-13/32	2.406	61.12
2-7/16	2.438	61.91
2-15/32	2.469	62.71
2-1/2	2.5	63.50
2-17/32	2.531	64.29
2-9/16	2.563	65.09
2-19/32	2.594	65.88
2-5/8	2.625	66.68
2-21/32	2.656	67.47
2-11/16	2.688	68.26
2-23/32	2.719	69.06
2-3/4	2.75	69.85
2-25/32	2.781	70.64
2-13/16	2.813	71.44
2-27/32	2.844	72.23
2-7/8	2.875	73.03
2-29/32	2.906	73.82
2-15/16	2.938	74.61
2-31/32	2.969	75.41
3	3.0	76.20
3-1/32	3.031	76.99
3-1/16	3.063	77.79
3-3/32	3.094	78.58
3-1/8	3.125	79.38
3-5/32	3.156	80.17
3-3/16	3.188	80.96
3-7/32	3.219	81.76
3-1/4	3.25	82.55
3-9/32	3.281	83.34
3-5/16	3.313	84.14
3-11/32	3.344	84.93
3-3/8	3.375	85.73
3-13/32	3.406	86.52
3-7/16	3.438	87.31
3-15/32	3.469	88.11
3-1/2	3.5	88.90
3-17/32	3.531	89.69
3-9/16	3.563	90.49
3-19/32	3.594	91.28
3-5/8	3.625	92.08
3-21/32	3.656	92.87
3-11/16	3.688	93.66
3-23/32	3.719	94.46
3-3/4	3.75	95.25
3-25/32	3.781	96.04
3-13/16	3.813	96.84
3-27/32	3.844	97.63
3-7/8	3.875	98.43
3-29/32	3.906	99.22
3-15/16	3.938	100.01
3-31/32	3.969	100.81
4	4.0	101.60

FRACTION (IN.)	DECIMAL (IN.)	METRIC (MM)
4-1/32	4.031	102.39
4-1/16	4.063	103.19
4-3/32	4.094	103.98
4-1/8	4.125	104.77
4-5/32	4.156	105.57
4-3/16	4.188	106.36
4-7/32	4.219	107.16
4-1/4	4.25	107.95
4-9/32	4.281	108.74
4-5/16	4.313	109.54
4-11/32	4.344	110.33
4-3/8	4.375	111.12
4-13/32	4.406	111.92
4-7/16	4.438	112.71
4-15/32	4.469	113.51
4-1/2	4.5	114.30
4-17/32	4.531	115.09
4-9/16	4.563	115.89
4-19/32	4.594	116.68
4-5/8	4.625	117.47
4-21/32	4.656	118.27
4-11/16	4.688	119.06
4-23/32	4.719	119.86
4-3/4	4.75	120.65
4-25/32	4.781	121.44
4-13/16	4.813	122.24
4-27/32	4.844	123.03
4-7/8	4.875	123.82
4-29/32	4.906	124.62
4-15/16	4.938	125.41
4-31/32	4.969	126.21
5	5.0	127.00
5-1/32	5.031	127.79
5-1/16	5.063	128.59
5-3/32	5.094	129.38
5-1/8	5.125	130.17
5-5/32	5.156	130.97
5-3/16	5.188	131.76
5-7/32	5.219	132.56
5-1/4	5.25	133.35
5-9/32	5.281	134.14
5-5/16	5.313	134.94
5-11/32	5.344	135.73
5-3/8	5.375	136.52
5-13/32	5.406	137.32
5-7/16	5.438	138.11
5-15/32	5.469	138.91
5-1/2	5.5	139.70
5-17/32	5.531	140.49
5-9/16	5.563	141.29
5-19/32	5.594	142.08
5-5/8	5.625	142.88
5-21/32	5.656	143.67
5-11/16	5.688	144.46
5-23/32	5.719	145.26
5-3/4	5.75	146.05
5-25/32	5.781	146.84
5-13/16	5.813	147.64
5-27/32	5.844	148.43
5-7/8	5.875	149.22
5-29/32	5.906	150.02
5-15/16	5.938	150.81
5-31/32	5.969	151.61
6	6.0	152.40

INDEX

PART#	PAGE#
BQ11	71
BQ12	71
BQ18	90
BQ19	90
BQ21	89
BQ22A	90
BQ22B	90
BQ22C	90
BQ23	89
BQ26	90
BQ35	90
BQ37	89
BQ65	70
BQ66	70
BQ67	70
BQ68	70
BQ69	70
BQ70	70
BQ71	46,58
BQ97	70
BQ98	70
BQ101	71
BQ160	90
BQ161	90
BQ162	90
BQ163	90
BQ164	90
BQ165	90
BQ166	90
BQ167	90
BQ170	79
BQ17755	75
BQ200	71
BQ201	71
BQ202	71
BQ203	69
BQ204	71
BQ206	89
BQ206H	89
BQ206HS	89
BQ206S	89
BQ207	89
BQ207H	89
BQ208	89
BQ208H	89
BQ210	69
BQ211	69
BQ212	69
BQ213	69
BQ215	69
BQ216	69
BQ217	69
BQ218	69

PART#	PAGE#
BQ226	79
BQ227	79
BQ228	79
BQ233	69
BQ234	69
BQ251-BK	72
BQ251-BL	72
BQ251-GD	72
BQ251-GR	72
BQ251-PP	72
BQ251-RD	72
BQ251-SV	72
BQ251-YL	72
BQ255	74
BQ272	69
BQ273	69
BQ274	69
BQ275	69
BQ276	70
BQ277	70
BQ288	74
BQ289	74
BQ294	74
BQ296	71
BQ301	72
BQ303	72
BQ303BK	72
BQ303BL	72
BQ303RD	72
BQ310	72
BQ311	72
BQ312-BK	71
BQ312-GY	71
BQ330	78
BQ331	78
BQ611	72
BQ611B	72
BQ728A	88
BQ728B	88
BQ801	79
BQ1014	89
BQ1020	90
BQ1021A	89
BQ1022	90
BQ1026	79
BQ1150	90
BQ1415	90
BQ2001W	89
BQ2008	89
BQ2010	89
BQ2033	90
BQ2090	79
BQ2091	79

PART#	PAGE#
BQ2101B	71
BQ2103	71
BQ2104	72
BQ2110	90
BQ2300	79
BQ2301	79
BQ2302	79
BQ2303	79
BQ2304	79
BQ2305	79
BQ2306	79
BQ2307	79
BQ2308	79
BQ2309	79
BQ2310	79
BQ2311	79
BQ2312	79
BQ2313	79
BQ2314	79
BQ2335	79
BQ2336	79
BQ2696-R3	90
BQ7003	79
BQ7012	90
BQ7012	90
BQ9150	88
BQ9151	88
BQ42525	72
BQB01	61
BQB04	61
BQB05	61
BQB06	68
BQB07	61
BQB08	65
BQB09	65
BQB10	61
BQB11	61
BQB12	65
BQB14	61
BQB15	61
BQB16	65
BQB17	65
BQB18	65
BQB19	65
BQB20	61
BQB21	65
BQB22	65
BQB23	65
BQB24	61
BQB25	61
BQB26	61
BQB27	61
BQB29	61

PART#	PAGE#
BQB30	61
BQB31	65
BQB32	65
BQB34	65
BQB35	65
BQB36	65
BQB37	66
BQB38	66
BQB39	62
BQB40	62
BQB41	62
BQB42	62
BQB48	66
BQB49	66
BQB50	62
BQB51	66
BQB52	66
BQB53	62
BQB54	62
BQB64	62
BQB65	62
BQB69	66
BQB70	66
BQB71	66
BQB72	66
BQB73	66
BQB74	66
BQB75	62
BQB77	66
BQB78	66
BQB80	62
BQB81	66
BQB83	62
BQB85	67
BQB86	62
BQB87	62
BQB88	62
BQB89	63
BQB90	63
BQB91	63
BQB92	67
BQB93	67
BQB94	63
BQB98	67
BQB99	67
BQB100	67
BQB101	67
BQB105	63
BQB109	67
BQB110	67
BQB111	63
BQB112	63
BQB115	63

INDEX

PART#	PAGE#
BQB118	63
BQB119	63
BQB120	63
BQB140	67
BQB141	67
BQB151	63
BQB152	63
BQB160	63
BQB162	67
BQB163	67
BQB166	63
BQB168	67
BQB169	67
BQB171	64
BQB172	68
BQB174	68
BQB185	64
BQB186	64
BQB195	68
BQB221	68
BQB222	68
BQB223	68
BQB224	68
BQB225	68
BQB312	64
BQB313	64
BQB315	64
BQB316	64
BQB415	64
HF01	8
HF02	8
HF03	8
HF04	2
HF05	8
HF06	2
HF07	2
HF08	3
HF09	5
HF10	5
HF105S	73
HF11	5
HF115S	73
HF12	5
HF125S	73
HF13	5
HF135S	73
HF14	5
HF145S	73
HF15	2
HF155S	73
HF16	2
HF16B	2
HF165S	73,75

PART#	PAGE#
HF17	2
HF175S	73,75
HF18	3
HF26	8
HF27	8
HF28	3
HF29	3
HF30	7
HF305S	73
HF31	7
HF315S	73
HF33	2,42
HF335S	73,75
HF34	3
HF35	7
HF37	6
HF38	6
HF39	3
HF435S	75
HF455S	75
HF465S	75
HF52	3
HF53	4
HF54	2
HF61	5
HF62	7
HF63	2
HF71	6
HF72	6
HF73	6
HF74	6
HF77	4
HF81	2
HF82	4
HF83	7
HF84	2
HF89	2
HF92	3
HF94	3
HF97	3
HF98	3
HF99	4
HF100	3
HF101	3
HF102	5
HF110	5
HF111	5
HF114	7
HF115	4
HF116	4
HF117	4
HF119	3
HF120	8

PART#	PAGE#
HF125	7
HF139	8
HF145	3
HF300	6
HF301	6
HF310	4
HF311	4
HF403	6
HF404	6
HF075S	73
HF095S	73
HF09W	5
HF09WSS	73
HFBO1	9
HFBO2	9
HFBO3	9
HFBO5	9
HFBO7	18
HFBO8	18
HFBO9	9
HFBO95S	73
HFBI0	11
HFBI1	18
HFBI2	18
HFBI3	18
HFBI4	18
HFBI5	9
HFBI6	18
HFBI7	22
HFBI8	22
HFBI9	9
HFBI21	22
HFBI22	23
HFBI23	23
HFBI24	11
HFBI27	9
HFBI28	9
HFBI29	11
HFBI30	11
HFBI31	11
HFBI32	11
HFBI33	11
HFBI34	9
HFBI345S	73
HFBI35	9
HFBI36	9
HFBI37	9
HFBI375S	73
HFBI38	20
HFBI39	21
HFBI40	18
HFBI41	17
HFBI42	29

PART#	PAGE#
HFBI43	29
HFBI45	18
HFBI46	18
HFBI47	9
HFBI475S	75
HFBI48	17
HFBI49	18
HFBI50	9
HFBI51	22
HFBI52	29
HFBI53	18
HFBI54	17
HFBI55	17
HFBI56	19
HFBI57	19
HFBI58	21
HFBI59	17
HFBI60	17
HFBI61	21
HFBI62	19
HFBI66	17
HFBI67	16
HFBI68	24
HFBI69	24
HFBI72	17
HFBI73	10
HFBI74	29
HFBI75	11
HFBI76	24
HFBI77	24
HFBI78	28
HFBI79	28
HFBI80	21
HFBI81	19
HFBI82	24
HFBI83	24
HFBI84	17
HFBI85	19
HFBI86	29
HFBI87	29
HFBI90	21
HFBI91	19
HFBI92	11
HFBI93	12
HFBI94	28
HFBI95	28
HFBI98	21
HFBI100	19
HFBI101	20
HFBI102	24
HFBI103	24
HFBI105	12
HFBI106	12

INDEX

PART#	PAGE#
HFB107	29
HFB108	29
HFB111	10
HFB112	18
HFB113	29
HFB114	29
HFB115	24
HFB116	24
HFB117	29
HFB118	29
HFB119	29
HFB120	29
HFB121	29
HFB122	30
HFB123	28
HFB124	28
HFB125	24
HFB126	24
HFB127	24
HFB128	24
HFB129	24
HFB130	25
HFB131	25
HFB132	25
HFB133	19
HFB134	19
HFB135	25
HFB136	25
HFB139	8
HFB140	25
HFB141	25
HFB142	30
HFB143	30
HFB144	19
HFB145	20
HFB146	20
HFB148	21
HFB149	19
HFB150	12
HFB151SS	75
HFB155	25
HFB156	25
HFB157	12
HFB158	12
HFB159	12
HFB160	22
HFB161	22
HFB164	12
HFB171SS	75
HFB173	22
HFB174	25
HFB175	25
HFB176	28

PART#	PAGE#
HFB177	28
HFB178SS	75
HFB180	22
HFB182	21
HFB183	30
HFB184	30
HFB185	25
HFB186	25
HFB187	19
HFB188	21
HFB189	28
HFB190	28
HFB193	21
HFB194	10
HFB201	28
HFB202	28
HFB203	21
HFB209	25
HFB210	25
HFB211	21
HFB214	26
HFB215	26
HFB216	30
HFB217	26
HFB218	26
HFB221	26
HFB222	26
HFB230	16
HFB231	16
HFB236	22
HFB237	28
HFB238	28
HFB239	30
HFB240	30
HFB241	30
HFB242	30
HFB243	16
HFB245	30
HFB246	30
HFB247	30
HFB248	30
HFB249	30
HFB250	31
HFB251	22
HFB256	22
HFB259	31
HFB260	31
HFB267	22
HFB270	26
HFB273	21
HFB276	21
HFB277	26
HFB278	26

PART#	PAGE#
HFB283	16
HFB284	31
HFB285	31
HFB286	19
HFB288	10
HFB289	10
HFB299	22
HFB300	19
HFB306	26
HFB307	26
HFB309	23
HFB310	23
HFB315	26
HFB316	26
HFB317	26
HFB318	26
HFB321	27
HFB322	27
HFB323	27
HFB324	27
HFB328	31
HFB329	31
HFB332	31
HFB333	31
HFB340	12
HFB341	12
HFB342	12
HFB343	12
HFB344	10
HFB345	12
HFB346	12
HFB348	12
HFB349	13
HFB350	10
HFB351	10
HFB352	10
HFB353	13
HFB354	13
HFB356	13
HFB357	13
HFB358	13
HFB359	13
HFB360	13
HFB361	13
HFB362	13
HFB363	13
HFB364	13
HFB365	10
HFB366	13
HFB367	31
HFB368	31
HFB369	31
HFB370	31

PART#	PAGE#
HFB372	13
HFB373	13
HFB375	10
HFB376	31
HFB377	31
HFB378	23
HFB379	23
HFB380	27
HFB381	27
HFB384	16
HFB386	27
HFB387	27
HFB389	14
HFB390	14
HFB397	23
HFB403	19
HFB404	32
HFB405	23
HFB410	32
HFB411	32
HFB418	27
HFB419	27
HFB430	27
HFB431	27
HFB448	10
HFB450	32
HFB451	32
HFB456	14
HFB457	14
HFB465	32
HFB466	32
HFB474	32
HFB475	32
HFB493	32
HFB494	32
HFB518	14
HFB519	14
HFB520	14
HFB521	10
HFB522	10
HFB523	10
HFB524	11
HFB525	32
HFB526	32
HFB527	11
HFB529	11
HFB530	14
HFB531	14
HFB532	14
HFB533	11
HFB534	14
HFB535	14
HFB536	14

INDEX

PART#	PAGE#
HFB537	14
HFB538	14
HFB539	15
HFB540	15
HFC01	33
HFC02	33
HFC04	35
HFC05	35
HFC06	33
HFC07	33
HFC09	33
HFC10	33
HFC11	33
HFC12	33
HFC13	33
HFC14	35
HFC15	33
HFC17	33
HFC18	35
HFC19	35
HFC301	33
HFC307	33
HFC315	33
HFC316	35
HFC317	35
HFC318	35
HFC319	35
HFC320	35
HFC321	35
HFC322	35
HFC323	35
HFC324	35
HFC325	35
HFC326	36
HFC327	33
HFC328	36
HFC329	36
HFC331	34
HFC338	36
HFC339	36
HFC340	36
HFC341	36
HFC342	36
HFC343	36
HFC344	36
HFC345	36
HFC346	36
HFC347	36
HFIF01	37
HFIF02	40
HFIF03	43
HFIF05	37
HFIF06	43

PART#	PAGE#
HFIF07	37
HFIF08	37
HFIF09	40
HFIF10	37
HFIF11	37
HFIF14	37
HFIF15	44
HFIF18	37
HFIF19	37
HFIF20	40
HFIF21	37
HFIF22	44
HFIF23	41
HFIF24	40
HFIF25	41
HFIF26	37
HFIF27	41
HFIF28	41
HFIF29	37
HFIF30	37
HFIF31	41
HFIF32	37
HFIF33	40
HFIF34	41
HFIF35	40
HFIF36	38
HFIF37	41
HFIF38	38
HFIF39	41
HFIF40	38
HFIF41	44
HFIF42	45
HFIF43	41
HFIF44	45
HFIF45	38
HFIF46	41
HFIF47	41
HFIF48	41
HFIF51	40
HFIF52	45
HFIF53	41
HFIF54	41
HFIF55	41
HFIF56	42
HFIF57	42
HFIF58	42
HFIF59	42
HFIF60	45
HFIF60A	45
HFIF63	40
HFIF64	38
HFIF65	38
HFIF66	42

PART#	PAGE#
HFIF70	45
HFIF71	38
HFIF72	38
HFIF73	40
HFIF74	38
HFIF76	38
HFIF77	42
HFIF79	40
HFIF80	42
HFIF81	45
HFIF82	38
HFIF83	38
HFIF85	38
HFIF87	38
HFIF88	42
HFIF90	45
HFIF94	42
HFIF99	45
HFIF103	38
HFIF106	39
HFIF107	39
HFIF109	45
HFIF110	42
HFIF111	42
HFIF115	42
HFIF116	40
HFIF120	45
HFIF126SS	75
HFIF127	45
HFIF128	45
HFIF129	42
HFIF138	45
HFIF140	39
HFIF141	40
HFIF142	40
HFIF143	39
HFIF146	45
HFIF147	46
HFIF148	46
HFIF149	46
HFIF152	46
HFIF153	46
HFIF157	42
HFIF301	39
HFIF303	42
HFIF304	46
HFIF306	46
HFIF01B	37
HFIF01SS	73
HFIF02SS	73
HFIFX01	43
HFIFX02	43
HFIFX03	43

PART#	PAGE#
HFIFX04	43
HFIFX05	43
HFIFX06	43
HFIFX07	43
HFIFX08	43
HFIFX09	43
HFIFX10	43
HFIFX11	43
HFIFX12	43
HFIFX14	44
HFIFX15	44
HFIFX16	44
HFIFX17	44
HFIFX18	44
HFIFX19	44
HFIFX20	44
HFIFX21	44
HFIFX22	44
HFIFX23	43
HFIM01	47
HFIM02	48
HFIM03	47
HFIM04	47
HFIM05	48
HFIM06	48
HFIM07	48
HFIM08	47
HFIM09	47
HFIM10	47
HFIM11	47
HFIM12	48
HFIM13	47
HFIM14	47
HFIM15	47
HFIM16	47
HFIM17	49
HFIM18	47
HFIM19	47
HFIM19SS	73
HFIM21	47
HFIM22	49
HFIM24	48
HFIM25	48
HFIM26	48
HFIM27	48
HFIM28	48
HFIM29	48
HFIM32	48
HFIM01B	47
HFIM01SS	73
HFIM03SS	73
HFMF01	50
HFMF02	50

INDEX

PART#	PAGE#	PART#	PAGE#	PART#	PAGE#	PART#	PAGE#
HFMF03	52	HFMF69	55	HFMF10	56	LP14W-7	81
HFMF04	50	HFMF70	57	HFMM01	59	LP14W-7C	87
HFMF04SS	73	HFMF71	53	HFMM02	60	LP16-6	81
HFMF05	52	HFMF73	53	HFMM03	59	LP16-6C	87
HFMF06	50	HFMF74	53	HFMM04	59	LP16-6SS	86
HFMF07	50	HFMF79	55	HFMM05	59	LP17-6	81
HFMF08	52	HFMF90	57	HFMM06	59	LP17-6C	87
HFMF09	50	HFMF91	51	HFMM06SS	73	LP17-6SS	86
HFMF10	50	HFMF92	51	HFMM08	59	LP33-6	81
HFMF11	50	HFMF93	51	HFMM09	60	LP33-6C	87
HFMF12	50	HFMF96	53	HFMM10	60	LP33-6SS	86
HFMF13	50	HFMF99	53	HFMM11	60	LP34-M10X1	81
HFMF14	50	HFMF100	53	HFMM12	60	LP45-6	81
HFMF15	50	HFMF305	53	HFMM13	59	LP45-6C	87
HFMF16	50	HFMF307	51	HFMM15	59	LP46-6	81
HFMF18	55	HFMF308	51	HFMM17	59	LP46-6C	87
HFMF19	50	HFMF311	57	HFMM18	60	LP82-10X1	81
HFMF20	50	HFMF312	57	HFMM20	60	LP145-10X125	81
HFMF21	52	HFMF313	57	HFMM21	60	LPB01-10M	82
HFMF22	56	HFMF315	54	HFMM22	59	LPB01-10MABK	88
HFMF24	52	HFMF316	54	HFMM23	59	LPB01-10MABL	88
HFMF25	51	HFMF317	57	HFMM24	59	LPB01-10MARD	88
HFMF26	51	HFMF318	57	HFMM25	59	LPB01-10MC	87
HFMF27	56	HFMF319	57	HFMM302	60	LPB01-10MSS	86
HFMF28	51	HFMF320	57	HFMM303	60	LPB01-45-10M	82
HFMF29	51	HFMF322	55	LPS-LI-SAE	85	LPB01-75-10M	82
HFMF30	55	HFMF324	57	LPS-SD-DIN	85	LPB01-90-10M	82
HFMF31	51	HFMF325	57	LPS-SD-JIC	85	LPB09-10M	82
HFMF35	52	HFMF326	57	LPS-SD-SAE	85	LPB09-10MC	87
HFMF36	51	HFMF327	54	LPS-SI-JIC	85	LPB09-10MSS	86
HFMF37	51	HFMF328	55	LPS-SI-SAE	85	LPB09-45-10M	82
HFMF38	52	HFMF329	54	LPS-T-DIN	85	LPB09-75-10M	82
HFMF39	52	HFMF333	52	LPS-T-JIC	85	LPB09-90-10M	82
HFMF40	57	HFMF340	54	LPS-T-SAE	85	LPB09SW-10M	82
HFMF41	57	HFMF342	57	LP02	80	LPB12-10M	82
HFMF42	51	HFMF343	58	LP03	80	LPB47-12M	82
HFMF43	51	HFMF363	54	LP121	86	LPB171-10M	82
HFMF47	52	HFMF364	58	LP121SS	86	LPB171-10MC	87
HFMF48	55	HFMF365	58	LP124	81	LPB178-7	82
HFMF50	55	HFMF366	52	LP01-3	80	LPB178-7C	87
HFMF51	52	HFMF367	54	LP01-4	80	LPB448-7	82
HFMF54	52	HFMF368	54	LP06-7	80	LPB448-7C	88
HFMF55	52	HFMF369	54	LP09W-6	80	LPB448-7SS	86
HFMF56	53	HFMF370	54	LP09W-6C	87	LPB455-10M	82
HFMF57	53	HFMF371	58	LP10W-6	80	LPC01	74
HFMF58	53	HFMF372	54	LP10W-6C	87	LPC05	74
HFMF59	53	HFMF373	56	LP11-6	80	LPC06	74
HFMF62	53	HFMF374	54	LP11W-6	80	LPC07	74
HFMF63	53	HFMF375	54	LP11W-6C	87	LPC09	74
HFMF65	53	HFMF01	56	LP12W-7	80	LPC17	74
HFMF66	51	HFMF02	56	LP12W-7C	87	LPC301	74
HFMF67	53	HFMF04	56	LP13W-7	80	LP1F01-6	83
HFMF68	51	HFMF04-M16	56	LP13W-7C	87	LP1F01-6C	88

INDEX

PART#	PAGE#
LP1F01-6SS	86
LP1F02-7	83
LP1F126-6	83
LP1F126-6C	88
LP1M01-6	83
LP1M02-6	83
LP1M03-7	83
LP1M13-7	83
LP1M19	83
LP1M28-6	83
LP1M29-7	83
LPMF01-M10X1	84
LPMF01-M10X1C	88

PART#	PAGE#
LPMF01-M10X1SS	86
LPMF02-M10X1	84
LPMF05-M10X1	84
LPMF08-M10X1	84
LPMF09-M10X125	84
LPMF322-M10X1	84
LPMM01-M10X1	84
LPMM02-M10X1	84
LPMM03-M10X1	84
LPMM04-M10X125	84
LPMM06-M10X1	84
PSHF100	76
PSHF101	76,

PART#	PAGE#
PSHF102	76
PSHF103	76
PSHF104	76
PSHF105	76
PSHF106	76
PSHF107	76
PSHF108	76
PSHF109	76
PSHF111	76
PSHF114	76
PSHF115	77
PSHF116	77
PSHF117	77

PART#	PAGE#
PSHF118	77
PSHF119	77
PSHF120	77
PSHF121	77
PSHF122	77
PSHF123	77
PSHF124	77
PSHF125	77
PSHF126	77